

3 Burke Circuit EYRE SA

4  2  2 

For an in-depth look at this home, please click on the 3D tour for a virtual walk-through

Virtual Tour Link:
<https://my.matterport.com/show/?m=smBk76tvULj>

To submit an offer, please copy and paste this link into your browser: <https://airtable.com/shrBb12PXtTjyZAXm>

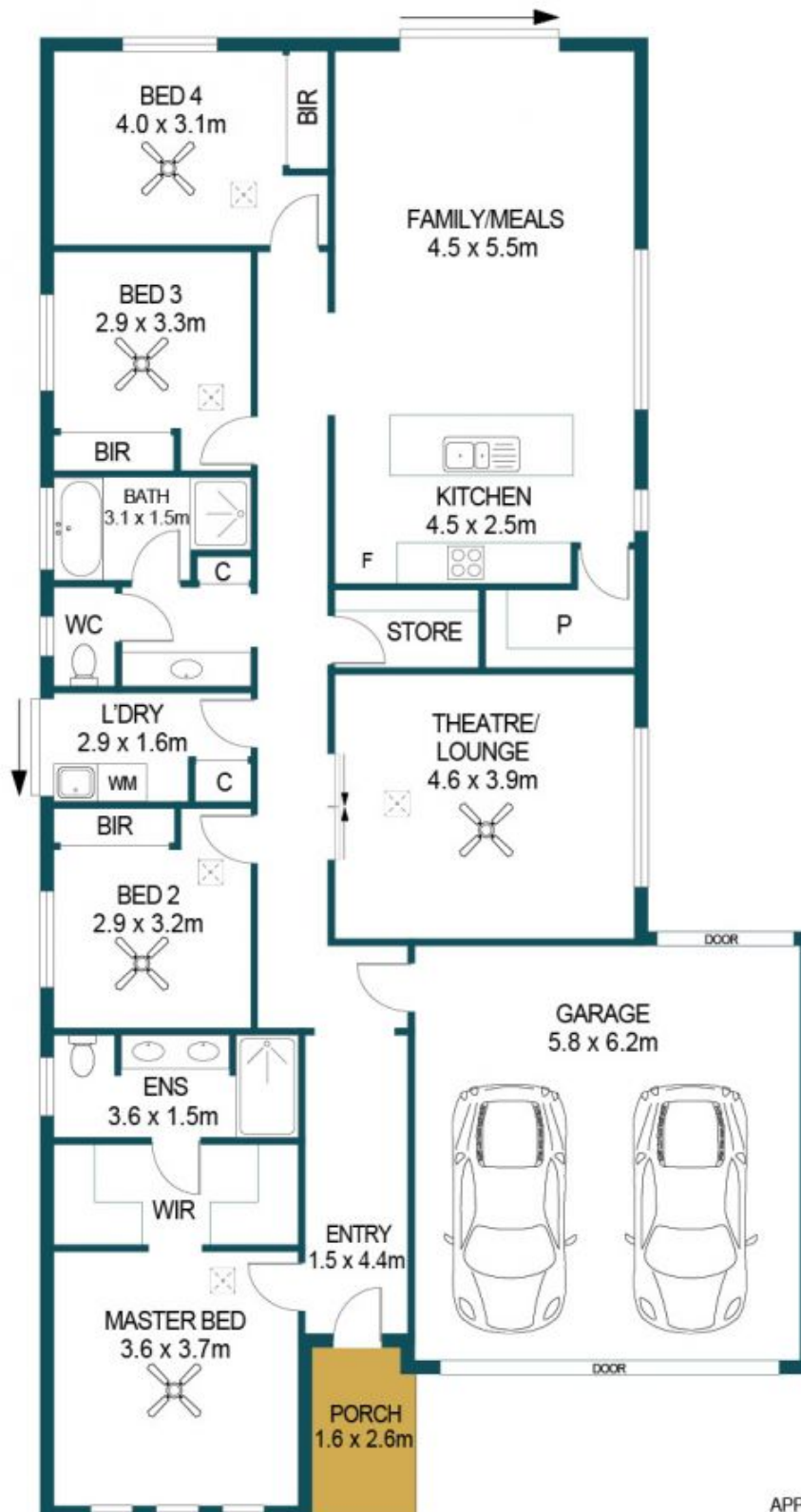
Matt Ashford and Edge Realty are proud to present to the market this stylish and modern haven set within a contemporary family-friendly neighbourhood; there will be no shortage of buyers eager to secure this idyllic property. The layout is crafted to make the most of the easy-care block with a spacious four-bedroom, two-bathroom layout while still offering a private backyard for the kids.

All the bedrooms run off the main hallway including the

Price : \$ 430,000
Building Size : 161 sqm
Land Size : 375 sqm
View : <https://www.edgerealty.com.au/sale/sa/north-north-east-suburbs/eyre/residential/house/6453749>



Matt Ashford
0487888178



3 BURKE CIRCUIT, EYRE

APPROXIMATE DIMENSIONS	
LIVING:	161.7m ²
GARAGE:	35.9m ²
PORCH:	4.2m ²
TOTAL:	201.8m ²

DISCLAIMER

PLANS SHOWN ARE FOR MARKETING PURPOSES ONLY. ALL DIMENSIONS ARE APPROXIMATE AND NOT TO SCALE. THEY ARE SUBJECT TO ERRORS AND INACCURACIES AND NO LIABILITY WILL BE ACCEPTED. INTERESTED PARTIES SHOULD MAKE THEIR OWN ENQUIRIES.



IMAGES AND FLOORPLAN BY:
**IN-HOUSE
IMAGING**
inhouseimaging.com.au