



3 Gully Drive GULFVIEW HEIGHTS SA

3  2  2 

For an in-depth look at this home, please click on the 3D tour for a virtual walk-through

Virtual Tour Link:
<https://my.matterport.com/show/?m=wG7LdtUXuSH>

To submit an offer, please follow this link:
<https://airtable.com/shrBb12PXtTjyZAXm>

If you love nothing more than gathering with your loved ones in complete comfort and style, then this is the home for you. A palatial floor plan awaits with multiple living spaces inside and out ensuring plenty of opportunities to host friends, relax with a good book or simply enjoy the peace and privacy of this wonderful location.

Inside, there are three bedrooms including two guest bedrooms set within their own wing along with the

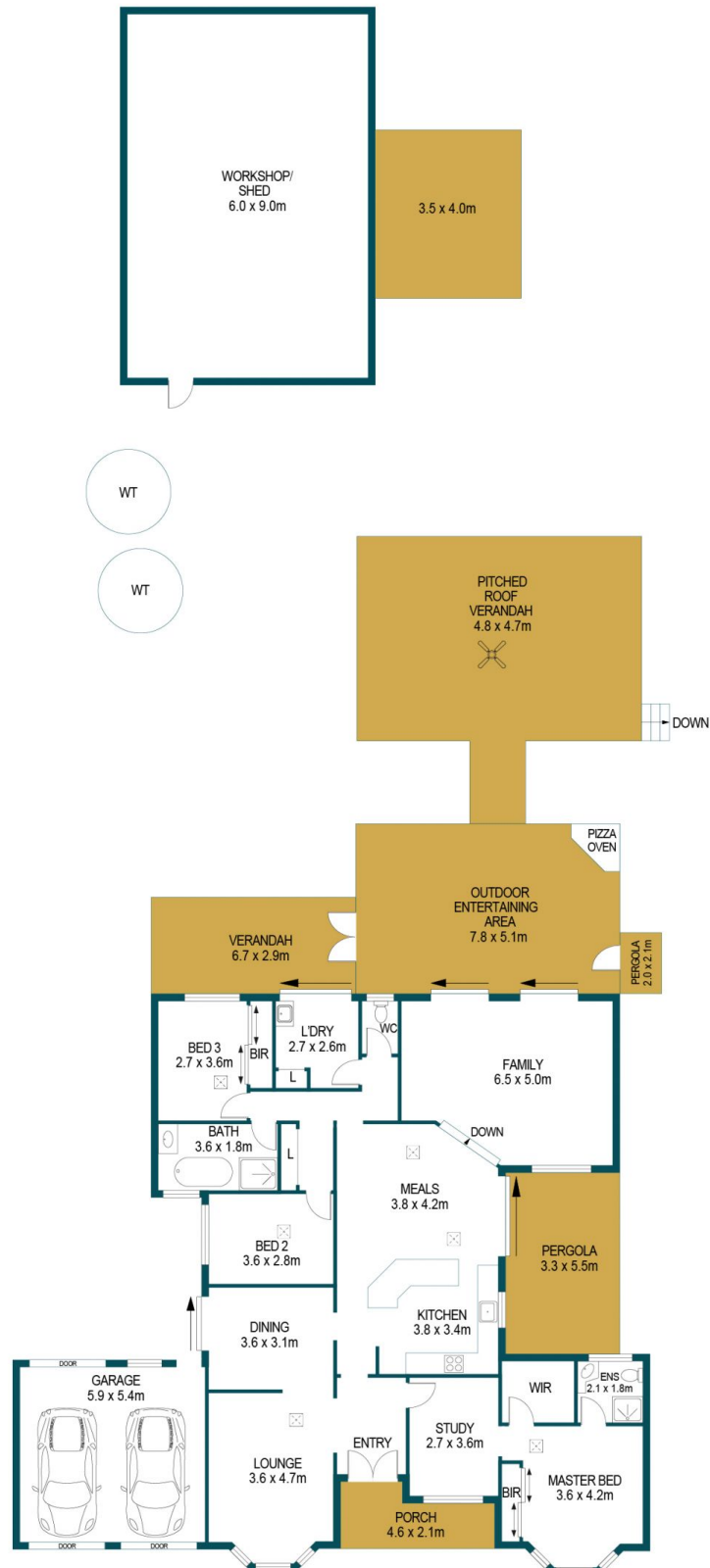
Price : \$ 625,000
Building Size : 381 sqm
Land Size : 1349 sqm
View : <https://www.edgerealty.com.au/sale/sa/north-north-east-suburbs/gulfview-heights/residential/house/6453753>



Amy Sim
 0430 884 244



Tom Dunstan
 0429656820



APPROXIMATE DIMENSIONS	
LIVING:	175.5m ²
PORCH	9.6m ²
GARAGE:	31.8m ²
PERGOLA:	22.3m ²
VERANDAH:	51.1m ²
ENTERTAINING:	36.9m ²
WORKSHOP/SHED:	54.0m ²
TOTAL:	381.2m ²

3 GULLY DRIVE, GULFVIEW HEIGHTS

DISCLAIMER

PLANS SHOWN ARE FOR MARKETING PURPOSES ONLY, ALL DIMENSIONS ARE APPROXIMATE AND NOT TO SCALE. THEY ARE SUBJECT TO ERRORS AND INACCURACIES AND NO LIABILITY WILL BE ACCEPTED. INTERESTED PARTIES SHOULD MAKE THEIR OWN ENQUIRIES.



IMAGES AND FLOORPLAN BY:
IN-HOUSE
IMAGING
inhouseimaging.com.au