



5 Trinity Court ANDREWS FARM SA

6  2  2 

For an in-depth look at this home, please click on the 3D tour for a virtual walk-through

Virtual Tour Link:

<https://my.matterport.com/show/?m=rKgHzKs99Rx>

To submit an offer, please copy and paste this link into your browser: <https://airtable.com/shrBb12PXtTjyZAXm>

Price : \$ 450,000

Building Size : 181 sqm

Land Size : 595 sqm

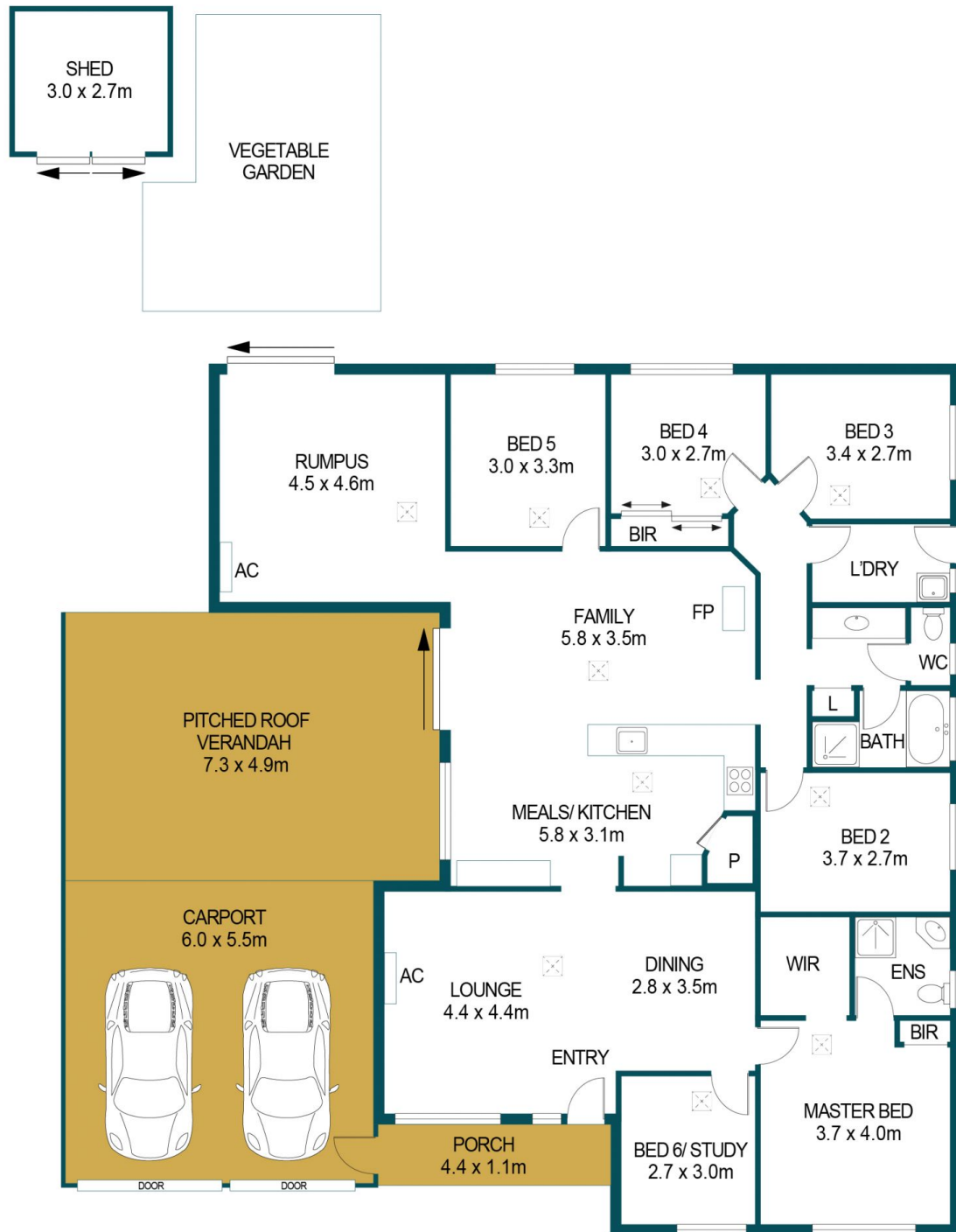
View : <https://www.edgerealty.com.au/sale/sa/north-north-east-suburbs/andrews-farm/residential/house/6453762>

Matt Ashford and Edge Realty are proud to present to the market this ultimate family haven, nestled within the heart of Andrews Farm. The flexible floorplan will grow with your family while the central location will ensure you are never far from everything you need.

There are six bedrooms set around central living spaces that include a combined lounge and dining room with air-conditioning and views over the landscaped front yard. The sixth bedroom could act as the perfect home office for



Matt Ashford
0487888178



APPROXIMATE DIMENSIONS

LIVING:	181.8m ²
SHED:	8.1m ²
CARPORT:	33.0m ²
VERANDAH:	35.8m ²
PORCH:	4.8m ²
TOTAL:	263.5m ²

5 TRINITY COURT, ANDREWS FARM

DISCLAIMER

PLANS SHOWN ARE FOR MARKETING PURPOSES ONLY, ALL DIMENSIONS ARE APPROXIMATE AND NOT TO SCALE. THEY ARE SUBJECT TO ERRORS AND INACCURACIES AND NO LIABILITY WILL BE ACCEPTED. INTERESTED PARTIES SHOULD MAKE THEIR OWN ENQUIRIES.



IMAGES AND FLOORPLAN BY:
IN-HOUSE
IMAGING
inhouseimaging.com.au