



## 22 Lee Street BRAHMA LODGE SA

3  1  2 

\*For an in-depth look at this home, please click on the 3D tour for a virtual walk-through\*

Virtual Tour Link:  
<https://my.matterport.com/show/?m=UQDKuJ1zRTA>

To submit an offer, please copy and paste this link into your browser: <https://airtable.com/shrBb12PXtTjyZAXm>

Mike Lao and Edge Realty are proud to present to the market this comfortable Brahma Lodge home close to schools, shops and picturesque parks. A selection of contemporary updates adds a touch of style and luxury to the home creating a unique and comfortable abode that you will love showing off to friends and family.

Gorgeous timber floorboards run under foot throughout much of the home including in the light-filled family room

**Price** : \$ 359,000  
**Building Size** : 128 sqm  
**Land Size** : 560 sqm  
**View** : <https://www.edgerealty.com.au/sale/sa/north-north-east-suburbs/brahma-lodge/residential/house/6453776>



**Mike Lao**  
0410390250



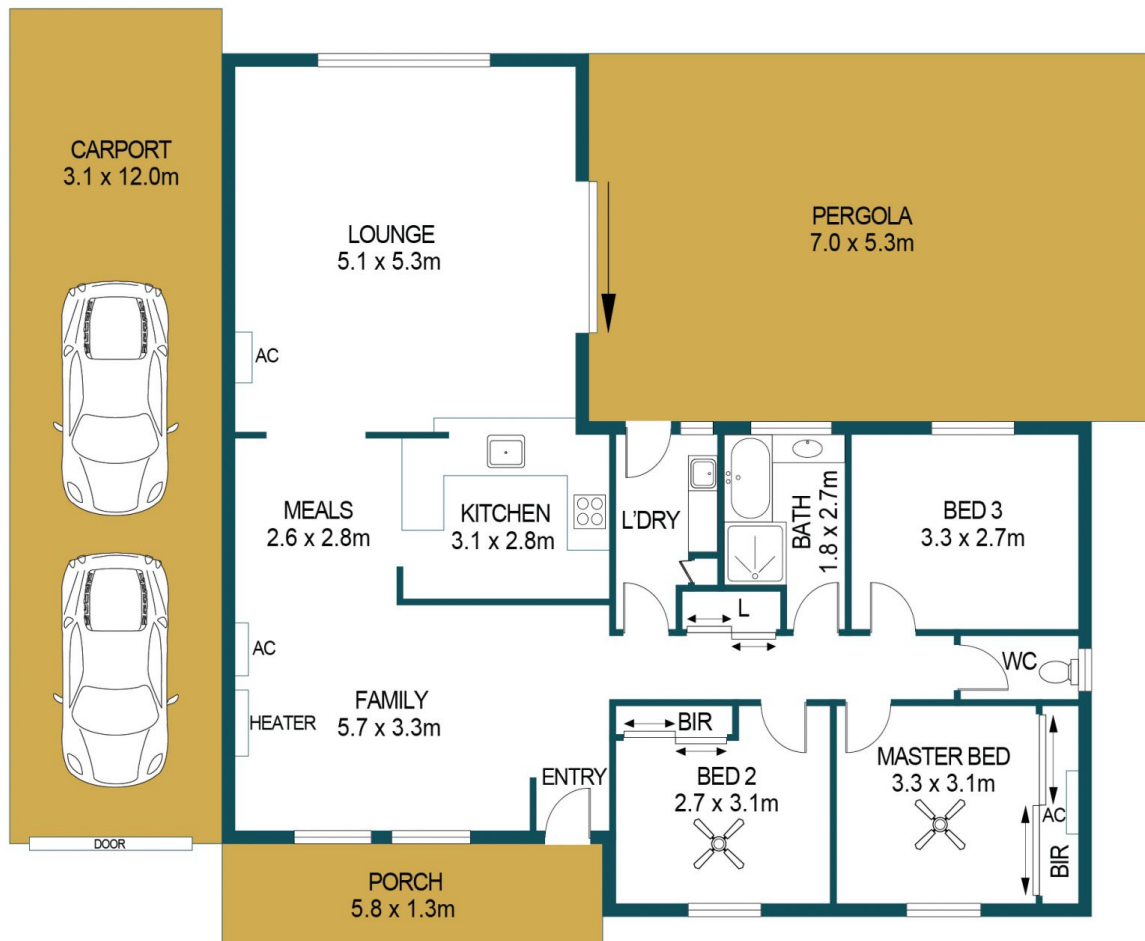
**Tyson Bennett**  
0437161997



SHED  
1.9 x 1.5m

SHED  
1.5 x 2.0m

CUBBY  
HOUSE  
2.4 x 2.2m



APPROXIMATE DIMENSIONS	
LIVING:	128.9m <sup>2</sup>
CARPORT:	37.2m <sup>2</sup>
SHED/CUBBY:	11.1m <sup>2</sup>
PORCH:	7.5m <sup>2</sup>
PERGOLA:	37.1m <sup>2</sup>
TOTAL:	221.8m <sup>2</sup>

## 22 LEE STREET, BRAHMA LODGE

### DISCLAIMER

PLANS SHOWN ARE FOR MARKETING PURPOSES ONLY. ALL DIMENSIONS ARE APPROXIMATE AND NOT TO SCALE. THEY ARE SUBJECT TO ERRORS AND INACCURACIES AND NO LIABILITY WILL BE ACCEPTED. INTERESTED PARTIES SHOULD MAKE THEIR OWN ENQUIRIES.



IMAGES AND FLOORPLAN BY:  
**IN-HOUSE**  
IMAGING  
[inhouseimaging.com.au](http://inhouseimaging.com.au)