



12 Boyaca Court PARALOWIE SA

4 2 2

For an in-depth look at this home, please click on the 3D tour for a virtual walk-through

Virtual Tour Link:
<https://my.matterport.com/show/?m=hUHYmoNYNyc>

To submit an offer, please copy and paste this link into your browser: <https://airtable.com/shrBb12PXtTjyZAXm>

Mike Lao and Edge Realty are proud to present to the market this expansive family home nestled along a quiet cul-de-sac. Sure to appeal to a wide range of buyers, this impressive property offers spacious and flexible living along with a good-size block and a prized location.

To the right of the entryway is the light-filled and open-plan lounge and dining room while a large kitchen, meals and family room is set in the heart of the home. Catering for

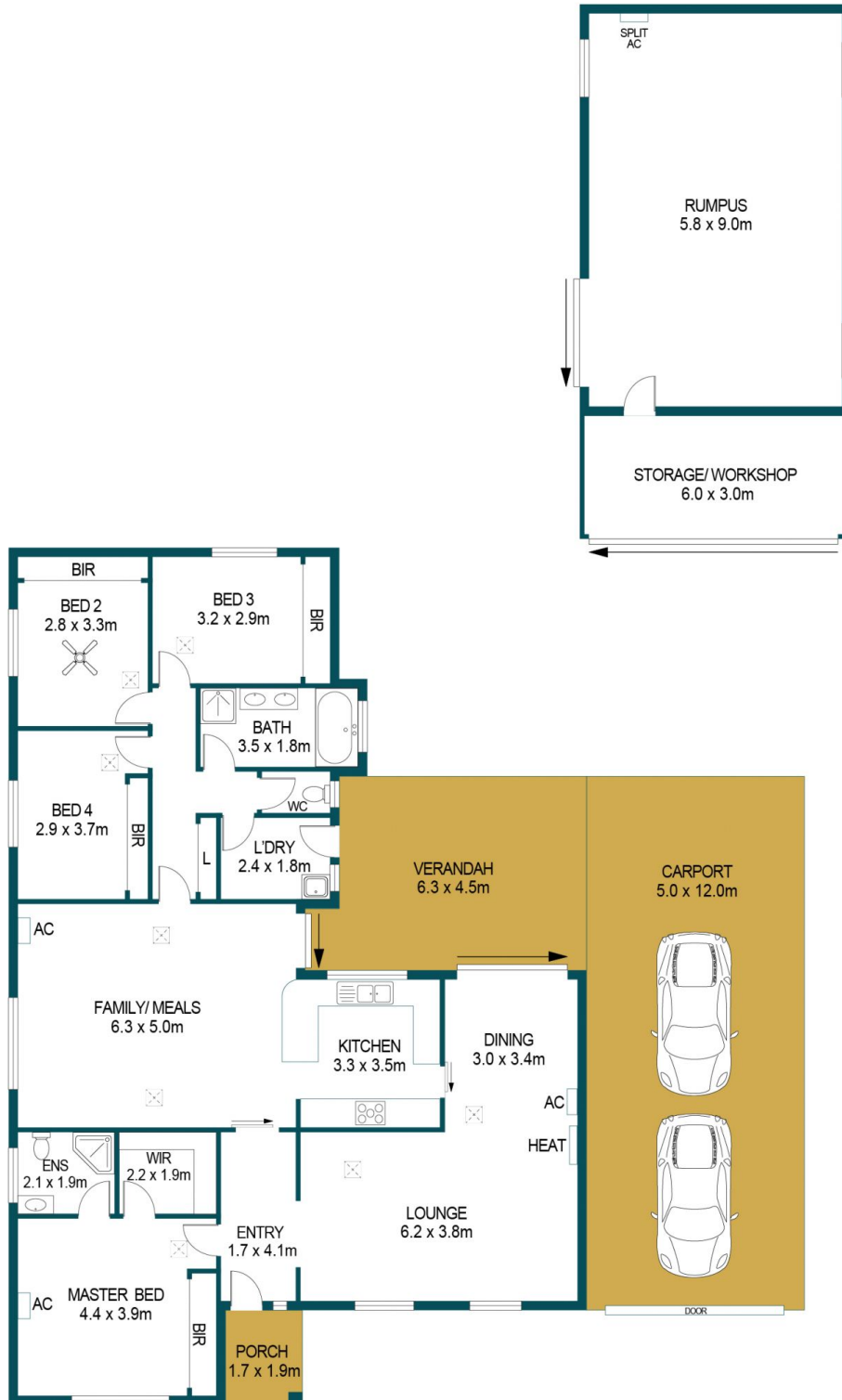
Price : \$ 507,600
Building Size : 180 sqm
Land Size : 798 sqm
View : <https://www.edgerealty.com.au/sale/sa/north-north-east-suburbs/paralowie/residential/house/6453799>



Mike Lao
0410390250



Stephen Legierski
0438888114



APPROXIMATE DIMENSIONS	
LIVING:	179.8m ²
RUMPUS :	53.5m ²
CARPORIT:	60.0m ²
STORE/WORKSHOP:	18.0m ²
VERANDAH:	27.5m ²
PORCH:	3.5m ²
TOTAL:	342.3m ²

12 BOYACA COURT, PARALOWIE

DISCLAIMER

PLANS SHOWN ARE FOR MARKETING PURPOSES ONLY, ALL DIMENSIONS ARE APPROXIMATE AND NOT TO SCALE. THEY ARE SUBJECT TO ERRORS AND INACCURACIES AND NO LIABILITY WILL BE ACCEPTED. INTERESTED PARTIES SHOULD MAKE THEIR OWN ENQUIRIES.



IMAGES AND FLOORPLAN BY:
IN-HOUSE
IMAGING
inhouseimaging.com.au