



#### 4/2 Alice Street PLYMPTON SA

2  1  1 

\*For an in-depth look at this home, please click on the 3D tour for a virtual walk-through\*

Virtual Tour Link:  
<https://my.matterport.com/show/?m=BYJ4BVcMv3R>

To submit an offer, please copy and paste this link into your browser: <https://airtable.com/shrBb12PXtTjyZAXm>

Mike Lao and Edge Realty are proud to present to the market this easy-care villa nestled right in the beating heart of Plympton. Treat yourself to a life of leisure and convenience in a home that is located only steps from everything you could need.

This is a great home for a wide range of buyers from first-time homeowners wanting to break into the market, savvy investors wanting a low-maintenance addition to their

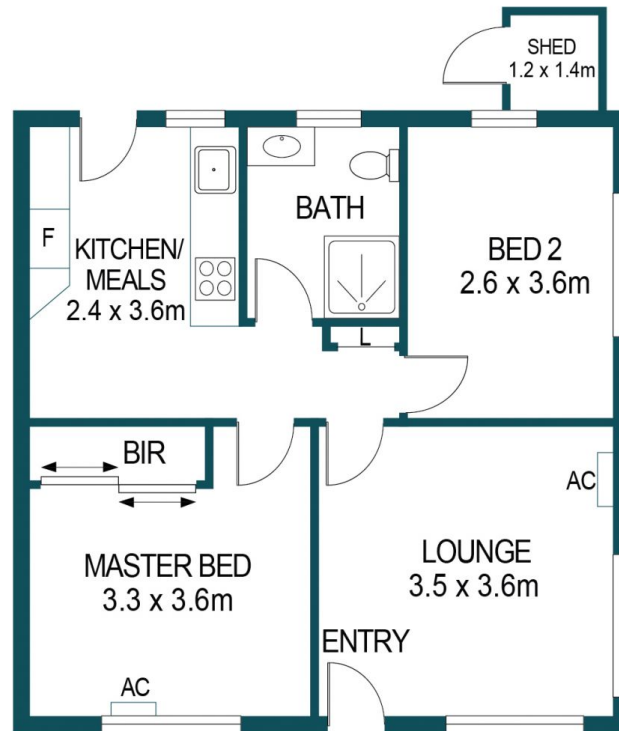
**Price** : \$ 260,000  
**Building Size** : 58 sqm  
**Land Size** : 167 sqm  
**View** : <https://www.edgerealty.com.au/sale/sa/south-south-east-suburbs/plympton/residential/house/6453805>



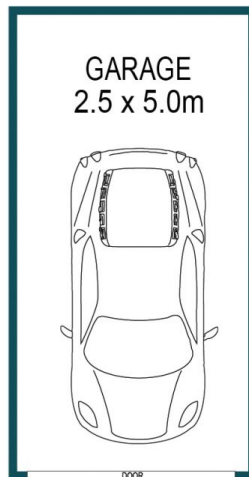
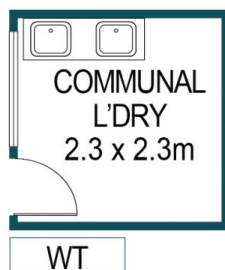
**Mike Lao**  
0410390250



**Corey Wilkop**  
0447888444



NOT ACCURATE POSITION



## 4/2 ALICE STREET, PLYMPTON

APPROXIMATE DIMENSIONS	
LIVING:	58.3m <sup>2</sup>
GARAGE:	12.5m <sup>2</sup>
SHED:	1.7m <sup>2</sup>
TOTAL:	72.5m <sup>2</sup>

### DISCLAIMER

PLANS SHOWN ARE FOR MARKETING PURPOSES ONLY, ALL DIMENSIONS ARE APPROXIMATE AND NOT TO SCALE. THEY ARE SUBJECT TO ERRORS AND INACCURACIES AND NO LIABILITY WILL BE ACCEPTED. INTERESTED PARTIES SHOULD MAKE THEIR OWN ENQUIRIES.



IMAGES AND FLOORPLAN BY:  
**IN-HOUSE**  
IMAGING  
[inhouseimaging.com.au](http://inhouseimaging.com.au)