



## 20 Waterside Drive BURTON SA

5  3  2 

\*For an in-depth look at this home, please click on the 3D tour for a virtual walk-through\*

Virtual Tour Link:  
<https://my.matterport.com/show/?m=cKX6zjiqn8E>

To submit an offer, please follow this link:  
<https://airtable.com/shrBb12PXtTjyZAXm>

Mike Lao and Edge Realty are proud to present to the market this sleek and stylish family home ready to impress anyone who walks through the front door. Sweeping high-gloss tile floors stretch before you with the living space illuminated by glittering chandeliers.

The layout is spacious and modern with an abundance of room to move, play and entertain whether this is your first or forever home. There are two levels of light-filled living

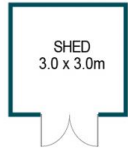
**Price** : \$ 685,000  
**Building Size** : 279 sqm  
**Land Size** : 600 sqm  
**View** : <https://www.edgerealty.com.au/sale/sa/north-north-east-suburbs/burton/residential/house/6460789>



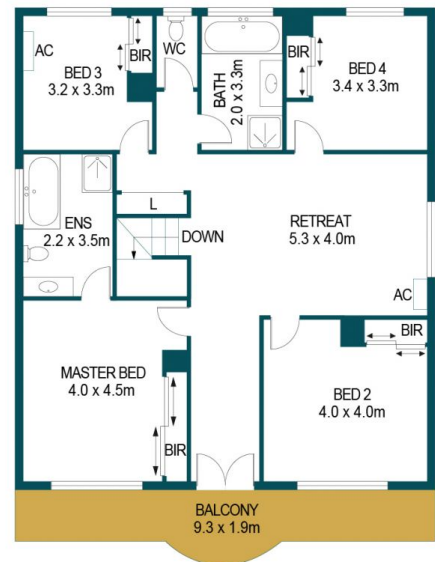
**Mike Lao**  
0410390250



**Tyson Bennett**  
0437161997



GROUND FLOOR



FIRST FLOOR

APPROXIMATE DIMENSIONS

LIVING:	279.5m <sup>2</sup>
BALCONY:	17.6m <sup>2</sup>
PORCH:	17.6m <sup>2</sup>
VERANDAH:	54.8m <sup>2</sup>
SHED:	9.0m <sup>2</sup>
GARAGE:	33.0m <sup>2</sup>
TOTAL:	411.5m <sup>2</sup>

## 20 WATERSIDE DRIVE, BURTON

DISCLAIMER

PLANS SHOWN ARE FOR MARKETING PURPOSES ONLY, ALL DIMENSIONS ARE APPROXIMATE AND NOT TO SCALE. THEY ARE SUBJECT TO ERRORS AND INACCURACIES AND NO LIABILITY WILL BE ACCEPTED. INTERESTED PARTIES SHOULD MAKE THEIR OWN ENQUIRIES.



IMAGES AND FLOORPLAN BY:  
**IN-HOUSE**  
IMAGING  
inhouseimaging.com.au