



13 Dewey Street ELIZABETH EAST SA

3  1  2 

At Edge Realty we are committed to the health and well-being of our team, their families and our wider community. Please see the below steps in order to apply and view the property.

Step 1

Please view the photos, floorplan, and digital 360 tour (if available) prior to submitting an application. Central to both the Elizabeth East and Elizabeth City Centre shopping precincts, and only a few minutes' walk from public busses and the Playford City Tennis center with a playground.

Step 2

To apply for this property please go to www.tenantoptions.com.au.

Step 3

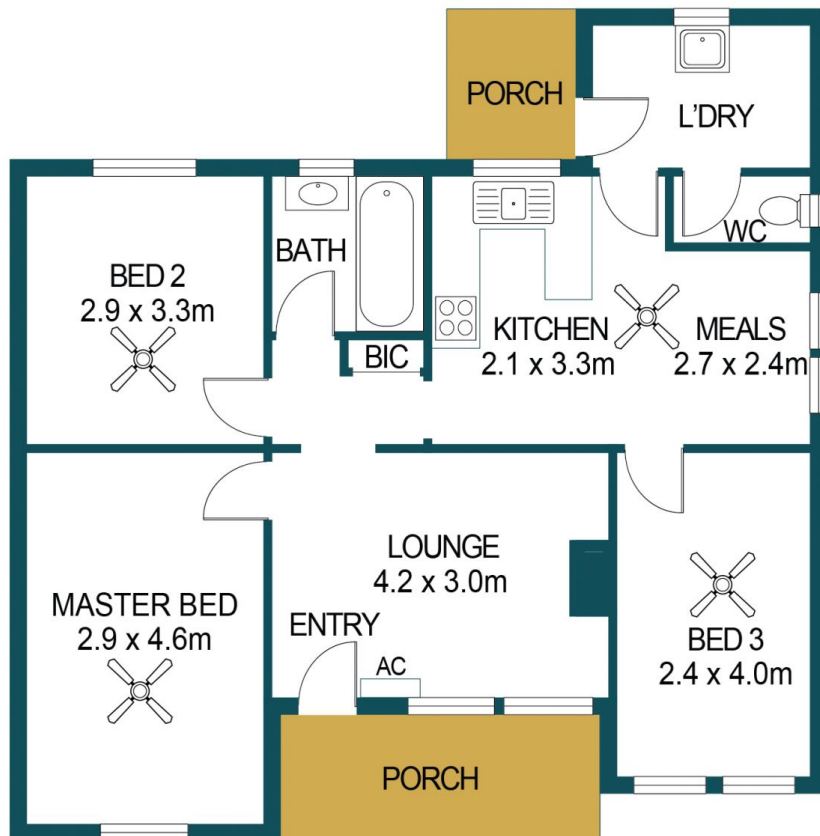
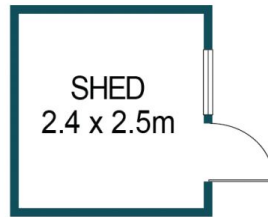
Building Size : 84 sqm
Land Size : 682 sqm
View : <https://www.edgerealty.com.au/lease/sa/north-north-east-suburbs/elizabeth-east/residential/house/6467634>



Emma Robinson
0497999951



Brooke McNicholl



APPROXIMATE DIMENSIONS

LIVING:	82.7m ²
PORCH:	9.3m ²
SHED:	6.1m ²
TOTAL:	98.1m ²

13 DEWEY STREET, ELIZABETH EAST

DISCLAIMER

PLANS SHOWN ARE FOR MARKETING PURPOSES ONLY. ALL DIMENSIONS ARE APPROXIMATE AND NOT TO SCALE. THEY ARE SUBJECT TO ERRORS AND INACCURACIES AND NO LIABILITY WILL BE ACCEPTED. INTERESTED PARTIES SHOULD MAKE THEIR OWN ENQUIRIES.



IMAGES AND FLOORPLAN BY:
IN-HOUSE
IMAGING
inhouseimaging.com.au