



## 42A Tintara Road PARALOWIE SA

3  1  1 

Humble Abode In A Stunning Location!

\*For an in-depth look at this home, please click on the 3D tour for a virtual walk-through\*

Virtual Tour Link:  
<https://my.matterport.com/show/?m=bf6pQAnMxM>

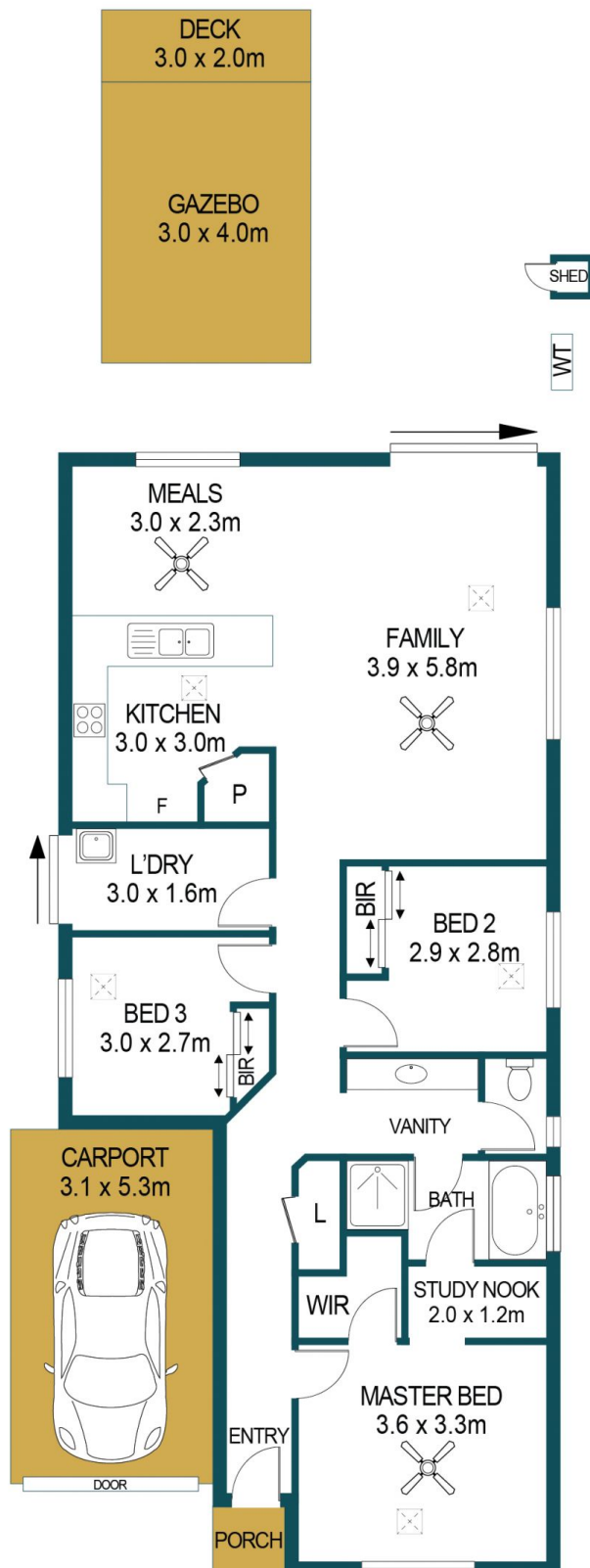
**Price** : \$ 382,000  
**Land Size** : 301 sqm  
**View** : <https://www.edgerealty.com.au/sale/sa/north-north-east-suburbs/paralowie/residential/house/6482912>

To submit an offer, please copy and paste this link into your browser: <https://airtable.com/shrBb12PXtTjyZAXm>

Jake Halliday and Edge Realty are proud to present to the market beautiful property. As pretty as a picture and exuding sleek contemporary style, this stunning home is truly one you will be proud to show off to friends and family. The property has been beautifully maintained and offers the lucky new owners a chance to simply move in, unpack and put your feet up from the moment you get the keys.



**Matt Ashford**  
**0487888178**



APPROXIMATE DIMENSIONS	
LIVING:	102.4m <sup>2</sup>
CARPORT:	16.4m <sup>2</sup>
SHED:	0.3m <sup>2</sup>
PORCH:	1.0m <sup>2</sup>
DECK/GAZEBO:	18.0m <sup>2</sup>
TOTAL:	138.1m <sup>2</sup>

## 42A TINTARA ROAD, PARALOWIE

### DISCLAIMER

PLANS SHOWN ARE FOR MARKETING PURPOSES ONLY. ALL DIMENSIONS ARE APPROXIMATE AND NOT TO SCALE. THEY ARE SUBJECT TO ERRORS AND INACCURACIES AND NO LIABILITY WILL BE ACCEPTED. INTERESTED PARTIES SHOULD MAKE THEIR OWN ENQUIRIES.



IMAGES AND FLOORPLAN BY:  
**IN-HOUSE**  
IMAGING  
[inhouseimaging.com.au](http://inhouseimaging.com.au)