



30 Golden Circuit PARAFIELD GARDENS SA

4  2  1 

For an in-depth look at this home, please click on the 3D tour for a virtual walk-through

Virtual Tour Link:
<https://my.matterport.com/show/?m=hWvpbzXLMg6>

To submit an offer, please copy and paste this link into your browser: <https://airtable.com/shrBb12PXtTjyZAXm>

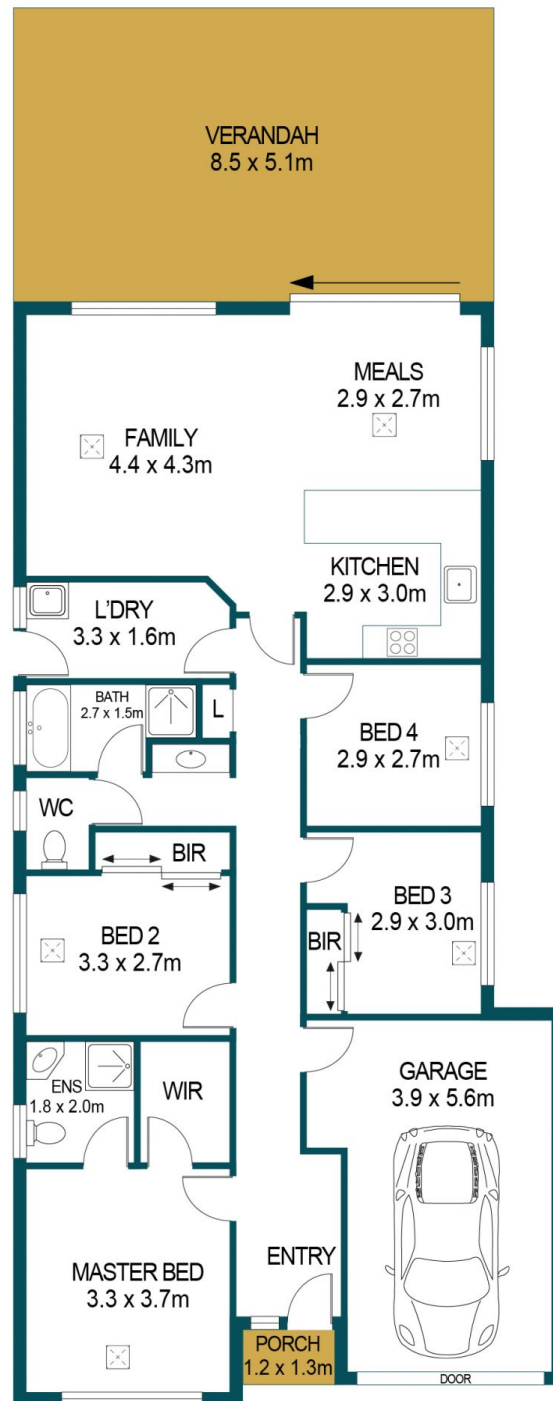
Matt Ashford and Edge Realty are proud to present to the market your easy-care family home awaiting in this charming abode located in the heart of Parafield Gardens. Whether this is your first property or forever home, you're sure to love the relaxed modern vibe with floating floors underfoot and lots of natural light that ensures a bright and welcoming feel.

There are four good-size bedrooms, two with built-in robes

Price : \$ 435,000
Building Size : 112 sqm
Land Size : 348 sqm
View : <https://www.edgerealty.com.au/sale/sa/north-north-east-suburbs/parafield-gardens/residential/house/6491868>



Matt Ashford
0487888178



APPROXIMATE DIMENSIONS

LIVING:	112.5m ²
PORCH:	1.5m ²
GARAGE:	21.8m ²
VERANDAH:	43.3m ²
TOTAL:	179.1m ²

30 GOLDEN CIRCUIT, PARAFIELD GARDENS

DISCLAIMER

PLANS SHOWN ARE FOR MARKETING PURPOSES ONLY, ALL DIMENSIONS ARE APPROXIMATE AND NOT TO SCALE. THEY ARE SUBJECT TO ERRORS AND INACCURACIES AND NO LIABILITY WILL BE ACCEPTED. INTERESTED PARTIES SHOULD MAKE THEIR OWN ENQUIRIES.



IMAGES AND FLOORPLAN BY:
IN-HOUSE
IMAGING
inhouseimaging.com.au