



## 4 Sydney Court CRAIGMORE SA

4 2 4

\*For an in-depth look at this home, please click on the 3D tour for a virtual walk-through\*

Virtual Tour Link:

<https://my.matterport.com/show/?m=Lzd3fwdV6HQ>

To submit an offer, please copy and paste this link into your browser: <https://airtable.com/shrBb12PXtTjyZAXm>

**Building Size** : 138 sqm

**Land Size** : 800 sqm

**View** : <https://www.edgerealty.com.au/sale/sa/north-north-east-suburbs/craigmore/residential/house/6492583>

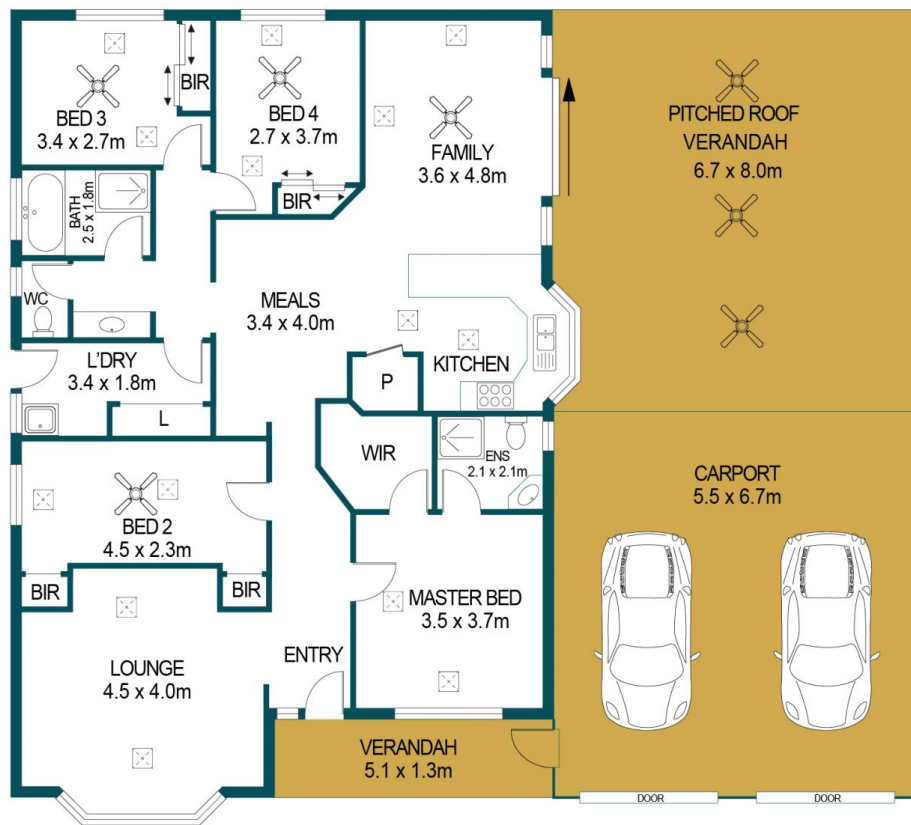
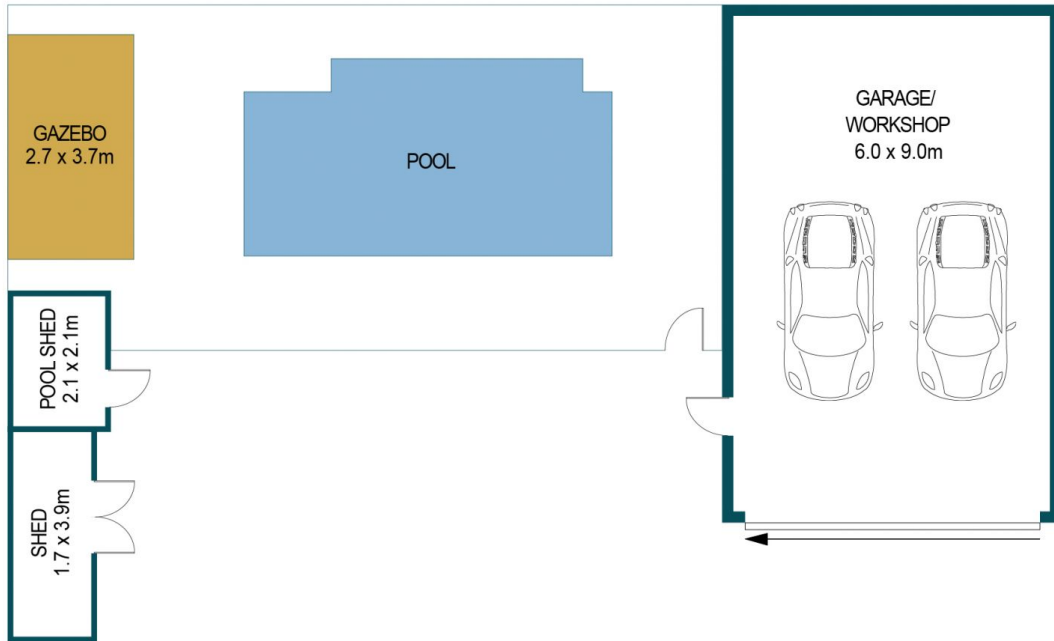
Matt Ashford and Edge Realty are proud to present to the market 4 Sydney Court, Craigmore.

From the huge 800sqm block to the sparkling pool and the host of updates throughout, this is a property that will tick every box on your must-have list. The layout is bright and modern with timber laminate flooring and easy-care tiles throughout, plus a neutral colour palette and plenty of natural light.

There are four bedrooms including the owner's suite with a



**Matt Ashford**  
0487888178



APPROXIMATE DIMENSIONS	
LIVING:	138.5m <sup>2</sup>
VERANDAH:	60.2m <sup>2</sup>
CARPORT:	36.8m <sup>2</sup>
SHED:	11.1m <sup>2</sup>
GAZEBO:	9.9m <sup>2</sup>
GARAGE:	54.0m <sup>2</sup>
TOTAL:	310.5m <sup>2</sup>

## 4 SYDNEY COURT, CRAIGMORE

### DISCLAIMER

PLANS SHOWN ARE FOR MARKETING PURPOSES ONLY, ALL DIMENSIONS ARE APPROXIMATE AND NOT TO SCALE. THEY ARE SUBJECT TO ERRORS AND INACCURACIES AND NO LIABILITY WILL BE ACCEPTED. INTERESTED PARTIES SHOULD MAKE THEIR OWN ENQUIRIES.



IMAGES AND FLOORPLAN BY:  
**IN-HOUSE**  
 IMAGING  
 inhouseimaging.com.au