



2 Summit Street SURREY DOWNS SA

3  1  4 

For an in-depth look at this home, please click on the 3D tour for a virtual walk-through

Virtual Tour Link:

<https://my.matterport.com/show/?m=KgKcum7JaNm>

To submit an offer, please copy and paste this link into your browser: <https://airtable.com/shrBb12PXtTjyZAXm>

Price : \$ 520,000

Building Size : 125 sqm

Land Size : 740 sqm

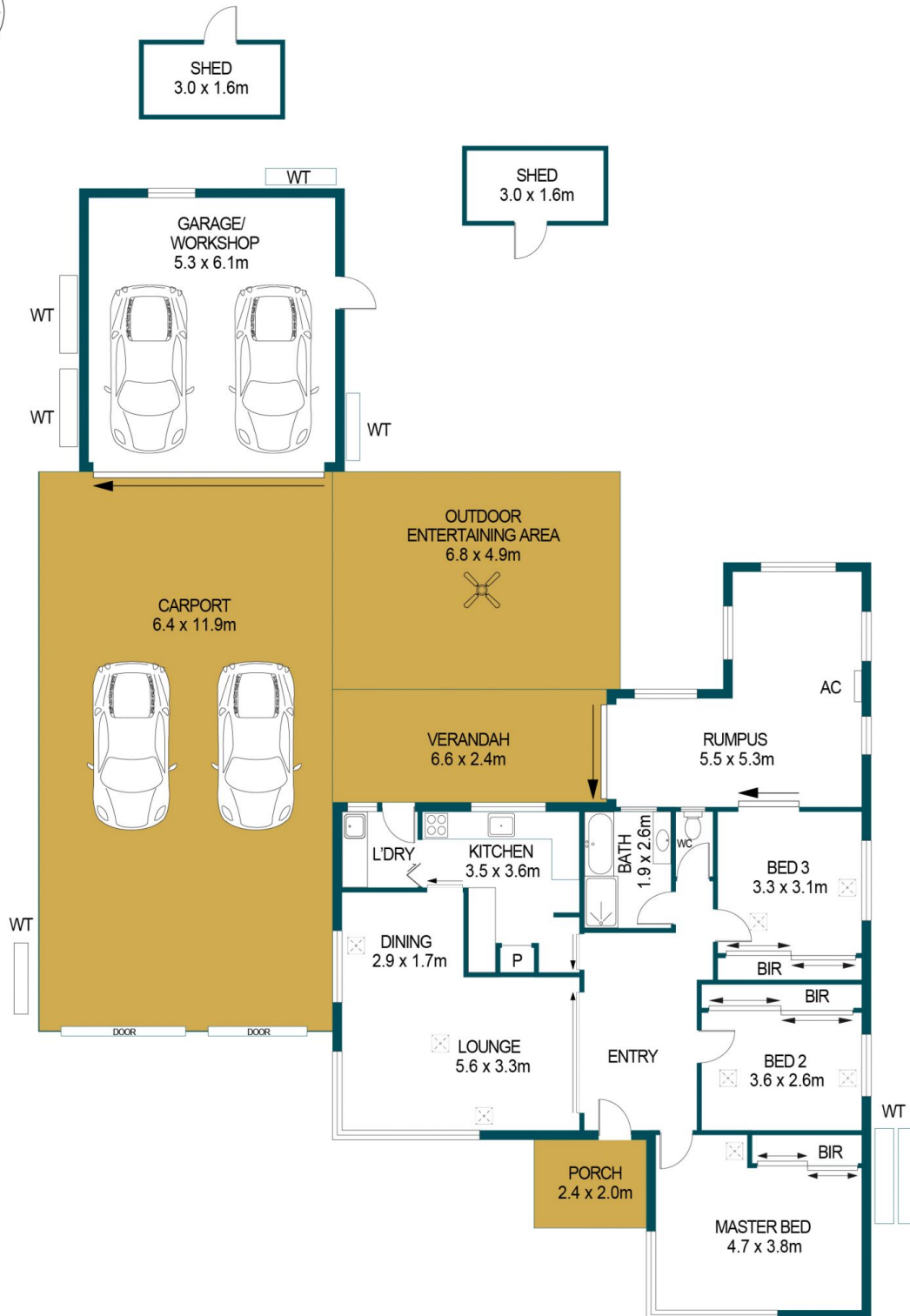
View : <https://www.edgerealty.com.au/sale/sa/north-north-east-suburbs/surrey-downs/residential/house/6495438>

Matt Ashford and Edge Realty are proud to present to the market 2 Summit Street, Surrey Downs.

Nestled along a quiet cul-de-sac behind manicured gardens and vibrant rose bushes is this much-loved and beautifully presented double brick home. An impressive list of updates ensures the lucky new owners of this Surrey Downs property can simply move in and start enjoying their new enviable lifestyle from day one.



Matt Ashford
0487888178



| APPROXIMATE DIMENSIONS | |
|------------------------|---------------------|
| LIVING: | 125.6m ² |
| CARPORT: | 76.2m ² |
| GARAGE: | 32.3m ² |
| ENTERTAINING: | 33.3m ² |
| SHED: | 9.6m ² |
| VERANDAH: | 15.8m ² |
| PORCH: | 4.8m ² |
| TOTAL: | 297.6m ² |

2 SUMMIT STREET, SURREY DOWNS

DISCLAIMER

PLANS SHOWN ARE FOR MARKETING PURPOSES ONLY, ALL DIMENSIONS ARE APPROXIMATE AND NOT TO SCALE. THEY ARE SUBJECT TO ERRORS AND INACCURACIES AND NO LIABILITY WILL BE ACCEPTED. INTERESTED PARTIES SHOULD MAKE THEIR OWN ENQUIRIES.



IMAGES AND FLOORPLAN BY:
IN-HOUSE
IMAGING
inhouseimaging.com.au