



24 Bronwyn Crescent SALISBURY NORTH SA

3 1 2

Almost Completed Renovation Ready For The Finishing Touches!

To submit an offer, please copy and paste this link into your browser: <https://airtable.com/shrBb12PXtTjyZAXm>

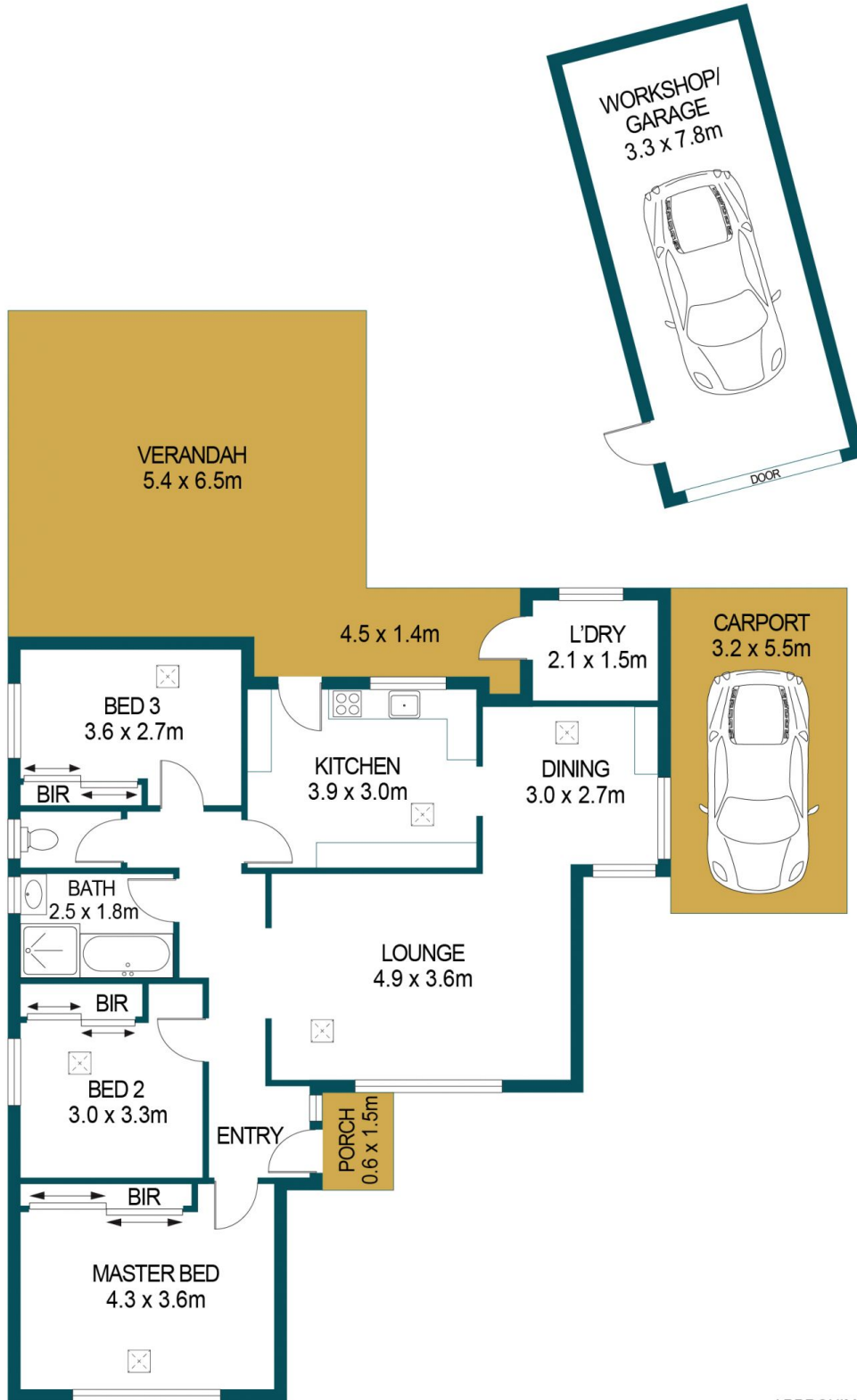
Stephen Legierski and Edge Realty are proud to present to the market your next exciting property project. With most of the work already completed, this is a great opportunity for those looking for a manageable renovation or a home where they can add their own touches without having to start from scratch.

Perfectly suited to a growing family, the layout is spread over one level and boasts three bedrooms, one bathroom and light-filled living spaces. All the bedrooms have built-in robes for added convenience while the bathroom is partially

Price : \$ 286,000
Land Size : 690 sqm
View : <https://www.edgerealty.com.au/sale/sa/north-north-east-suburbs/salisbury-north/residential/house/6496128>



Stephen Legierski
0438888114



APPROXIMATE DIMENSIONS	
LIVING:	95.5m ²
PORCH:	0.9m ²
CARPORT:	17.6m ²
VERANDAH:	37.1m ²
GARAGE:	25.7m ²
TOTAL:	176.8m ²

24 BRONWYN CRESCENT, SALISBURY NORTH

DISCLAIMER

PLANS SHOWN ARE FOR MARKETING PURPOSES ONLY, ALL DIMENSIONS ARE APPROXIMATE AND NOT TO SCALE. THEY ARE SUBJECT TO ERRORS AND INACCURACIES AND NO LIABILITY WILL BE ACCEPTED. INTERESTED PARTIES SHOULD MAKE THEIR OWN ENQUIRIES.



IMAGES AND FLOORPLAN BY:
IN-HOUSE
IMAGING
inhouseimaging.com.au