



7 Woodlands Road ELIZABETH DOWNS SA

3  1  2 

For an in-depth look at this home, please click on the 3D tour for a virtual walk-through

Virtual Tour Link:
<https://my.matterport.com/show/?m=g2sbSz75ekH>

To submit an offer, please copy and paste this link into your browser: <https://airtable.com/shrBb12PXtTjyZAXm>

Mike Lao and Edge Realty are proud to present to the market this generous, comfortable and centrally located family home. The layout has been designed for those in need of room to move and play with multiple living areas, outdoor entertaining zones and even a shimmering in-ground pool where you can relish endless hours of fun with loved ones.

All three bedrooms are set off the main hallway along with

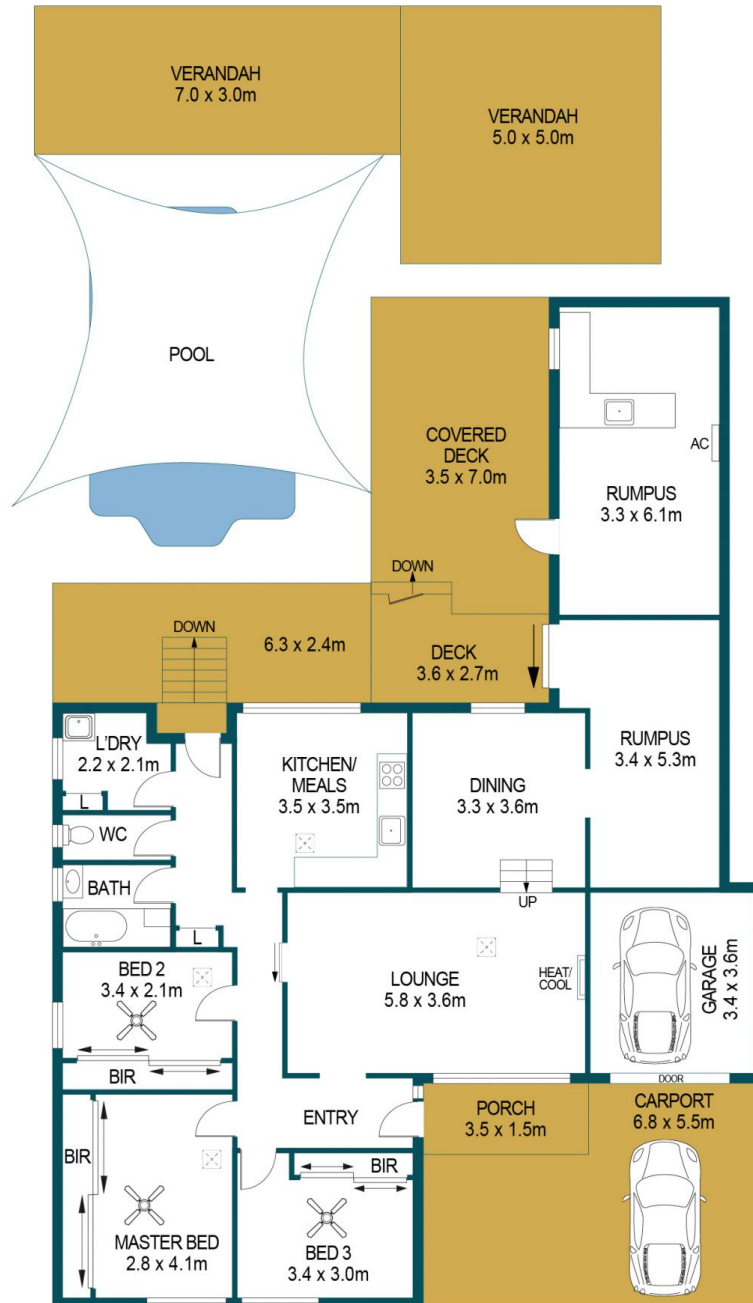
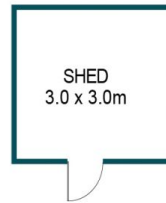
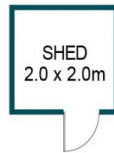
Price : \$ 340,000
Building Size : 149 sqm
Land Size : 690 sqm
View : <https://www.edgerealty.com.au/sale/sa/north-north-east-suburbs/elizabeth-downs/residential/house/6500548>



Mike Lao
0410390250



Tyson Bennett
0437161997



APPROXIMATE DIMENSIONS

LIVING:	149.6m ²
GARAGE:	12.2m ²
DECK:	34.2m ²
VERANDAH:	46.0m ²
SHED:	13.0m ²
CARPORT:	37.4m ²
TOTAL:	292.4m ²

7 WOODLANDS ROAD, ELIZABETH DOWNS

DISCLAIMER

PLANS SHOWN ARE FOR MARKETING PURPOSES ONLY, ALL DIMENSIONS ARE APPROXIMATE AND NOT TO SCALE. THEY ARE SUBJECT TO ERRORS AND INACCURACIES AND NO LIABILITY WILL BE ACCEPTED. INTERESTED PARTIES SHOULD MAKE THEIR OWN ENQUIRIES.



IMAGES AND FLOORPLAN BY:
IN-HOUSE
IMAGING
inhouseimaging.com.au