



**16 Roxburgh Crescent BLAKEVIEW SA**

3 2 1

\*For an in-depth look at this home, please click on the 3D tour for a virtual walk-through\*

Virtual Tour Link: <https://my.matterport.com/show/?m=MSe5xkkQ2Ae>

To submit an offer, please copy and paste this link into your browser: <https://airtable.com/shrBb12PXtTjyZAXm>

**Price** : \$ 370,000  
**Building Size** : 127 sqm  
**Land Size** : 300 sqm  
**View** : <https://www.edgerealty.com.au/sale/sa/north-north-east-suburbs/blakeview/residential/house/6502626>

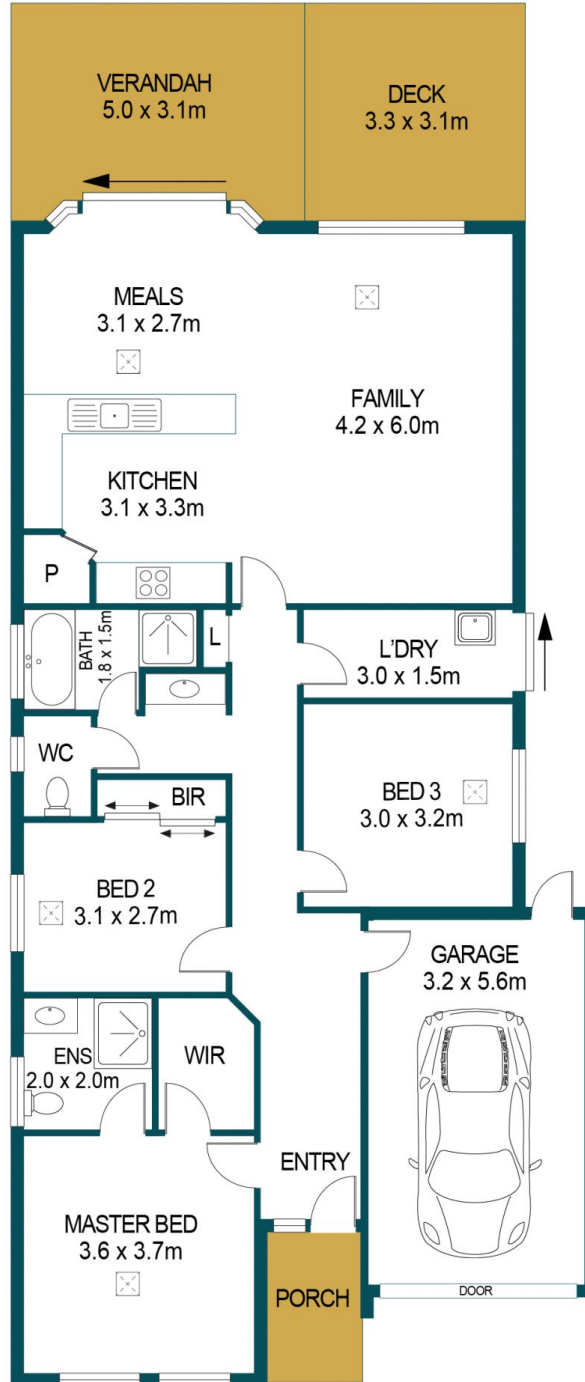
Matt Ashford and Edge Realty are proud to present to the market this gorgeous property, ready and waiting for the lucky new owners to simply move in and start relishing their new laid-back life of leisure. It's hard to imagine a more family-friendly home and location than 16 Roxburgh Crescent. A host of must-have modern features and comforts are on show throughout the single-storey floorplan ensuring this is a home you will love to call your very own.



**Matt Ashford**  
0487888178



SHED  
1.5 x 0.8m



APPROXIMATE DIMENSIONS	
LIVING:	127.3m <sup>2</sup>
DECK:	10.2m <sup>2</sup>
VERANDAH:	15.5m <sup>2</sup>
PORCH:	2.8 m <sup>2</sup>
SHED:	1.2m <sup>2</sup>
TOTAL:	157.0m <sup>2</sup>

## 16 ROXBURGH CRESCENT, BLAKEVIEW

### DISCLAIMER

PLANS SHOWN ARE FOR MARKETING PURPOSES ONLY, ALL DIMENSIONS ARE APPROXIMATE AND NOT TO SCALE. THEY ARE SUBJECT TO ERRORS AND INACCURACIES AND NO LIABILITY WILL BE ACCEPTED. INTERESTED PARTIES SHOULD MAKE THEIR OWN ENQUIRIES.



IMAGES AND FLOORPLAN BY:  
**IN-HOUSE**  
IMAGING  
inhouseimaging.com.au