

#### 14 Garrad Street BLAKEVIEW SA

4  2  4 

\*For an in-depth look at this home, please click on the 3D tour for a virtual walk-through\*

Virtual Tour Link:

<https://my.matterport.com/show/?m=aHU5ztLhDQ7>

To submit an offer, please copy and paste this link into your browser: <https://airtable.com/shrBb12PXtTjyZAXm>

**Price** : \$ 451,500

**Building Size** : 178 sqm

**Land Size** : 450 sqm

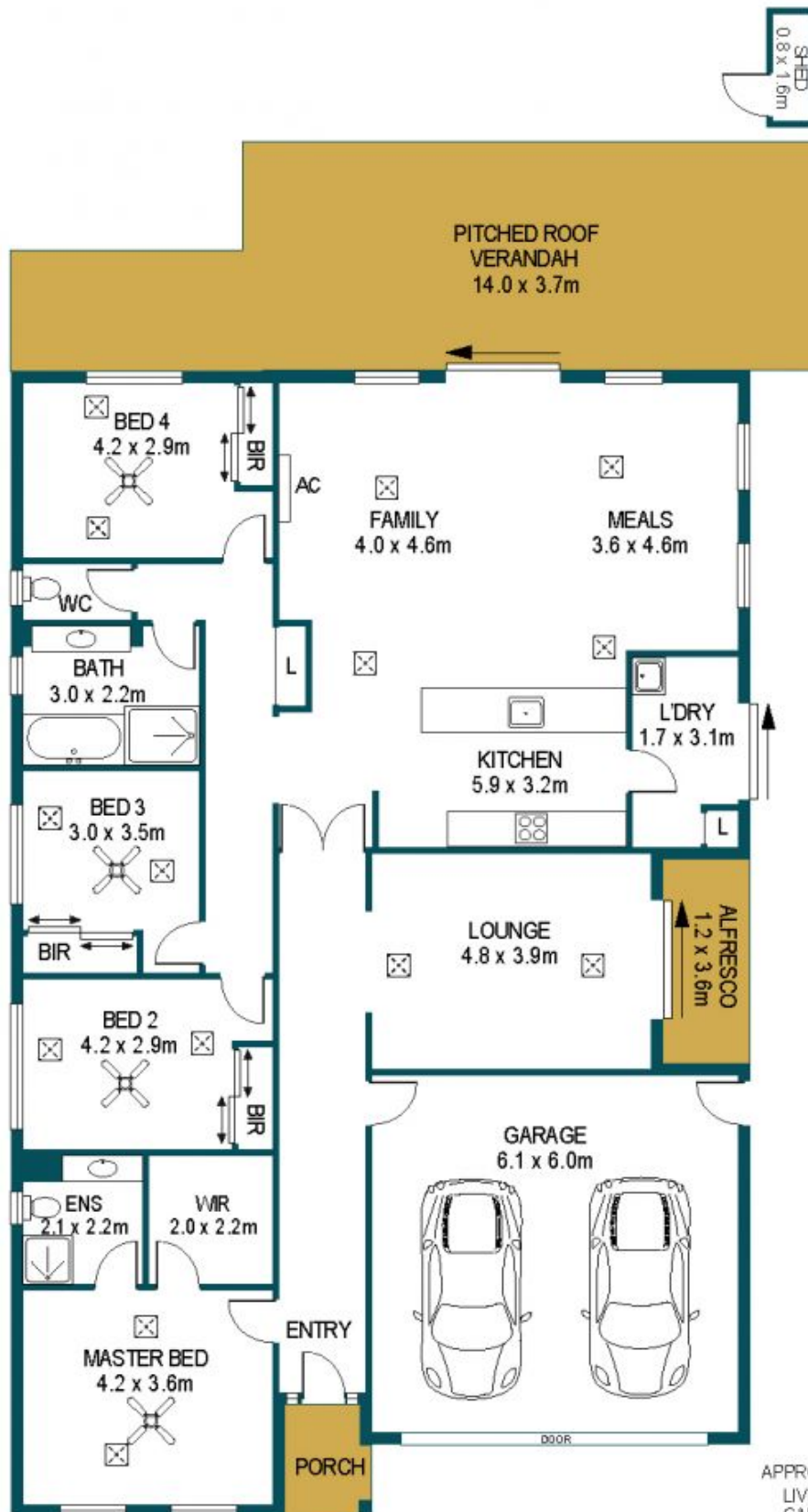
**View** : <https://www.edgerealty.com.au/sale/sa/north-north-east-suburbs/blakeview/residential/house/6515929>

Matt Ashford and Edge Realty are proud to present to the market 14 Garrad Street, Blakeview. If space, style and convenience are high on your property wish list then you can't go past this stunning Blakeview home. Spanning one level and designed with the modern family in mind, you will enjoy multiple living spaces and a show-stopping list of must-have contemporary comforts.

All four bedrooms run down one side of the floorplan with the master set just off the entry and offering a walk-in robe



**Matt Ashford**  
0487888178



| APPROXIMATE DIMENSIONS |                     |
|------------------------|---------------------|
| LIVING:                | 178.8m <sup>2</sup> |
| GARAGE:                | 36.6m <sup>2</sup>  |
| PORCH:                 | 3.0m <sup>2</sup>   |
| VERANDAH:              | 51.8m <sup>2</sup>  |
| ALFRESCO:              | 4.3m <sup>2</sup>   |
| SHED:                  | 1.3m <sup>2</sup>   |
| TOTAL:                 | 275.8m <sup>2</sup> |

## 14 GARRAD STREET, BLAKEVIEW

### DISCLAIMER

PLANS SHOWN ARE FOR MARKETING PURPOSES ONLY. ALL DIMENSIONS ARE APPROXIMATE AND NOT TO SCALE. THEY ARE SUBJECT TO ERRORS AND INACCURACIES AND NO LIABILITY WILL BE ACCEPTED. INTERESTED PARTIES SHOULD MAKE THEIR OWN ENQUIRIES.



IMAGES AND FLOORPLAN BY:  
**IN-HOUSE**  
IMAGING  
[inhouseimaging.com.au](http://inhouseimaging.com.au)