

34 Brimsdown Road DAVOREN PARK SA

3  1  6 

For an in-depth look at this home, please click on the 3D tour for a virtual walk-through

Virtual Tour Link:
<https://my.matterport.com/show/?m=etmbRVcZCe4>

Price : \$ 260,000

View : <https://www.edgerealty.com.au/sale/sa/north-north-east-suburbs/davoren-park/residential/house/6519720>

To submit an offer, please copy and paste this link into your browser: <https://airtable.com/shrBb12PXtTjyZAXm>

Mike Lao and Edge Realty are proud to present to the market this comfortable family home with a long list of impressive features and must-have modern comforts.

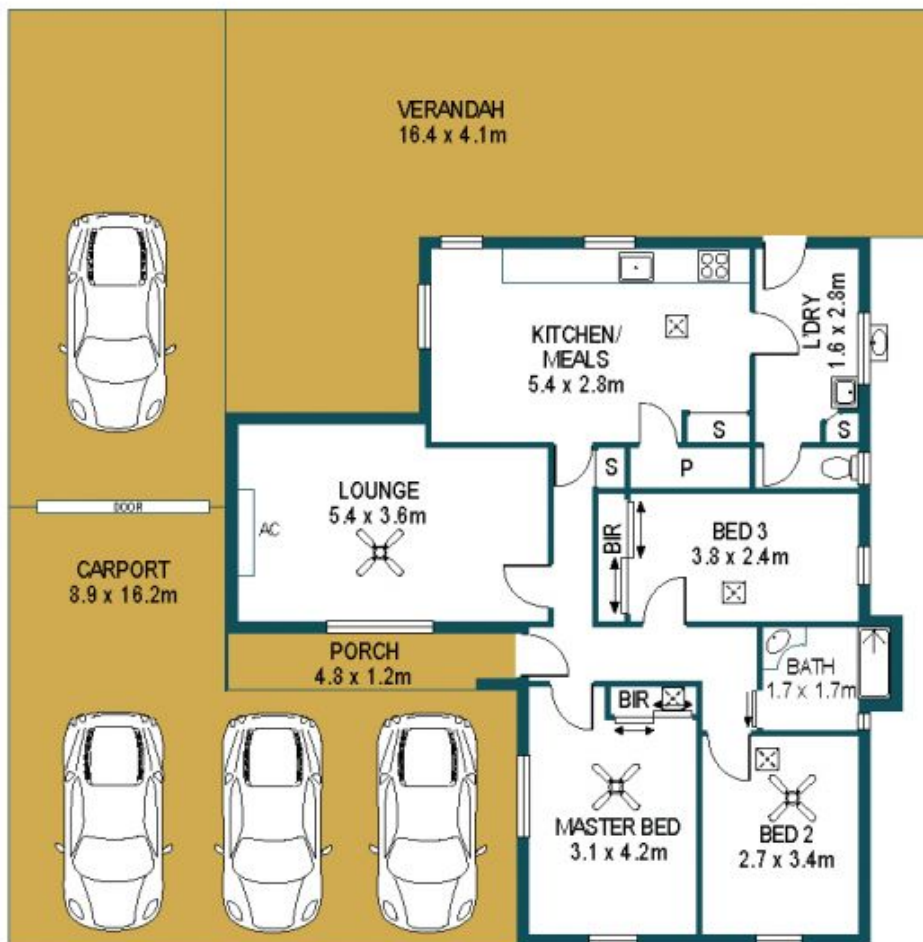
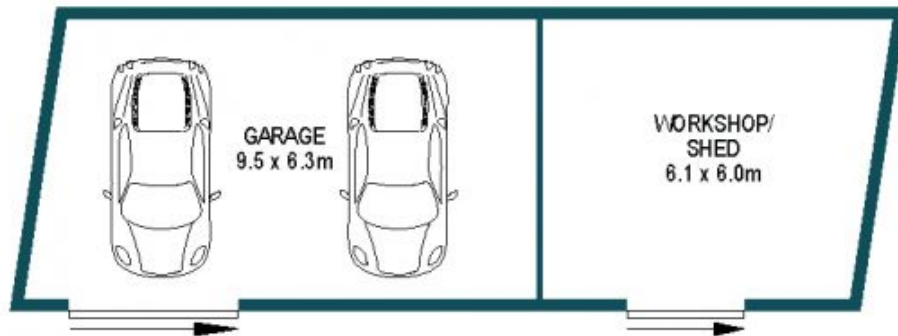
Large and light-filled living spaces offer room for everyone to spread out and relax including the generous lounge room with pine floorboards and an LG 3D wall-mounted Plasma TV that's included with the property. Floating floors are on show throughout the combined kitchen and meals



Mike Lao
0410390250



Tyson Bennett
0437161997



APPROXIMATE DIMENSIONS	
LIVING:	91.5m ²
CARPORT:	79.2m ²
SHED/GARAGE:	70.2m ²
PORCH:	5.8m ²
VERANDAH:	56.3m ²
TOTAL:	303.0m²

34 BRIMSDOWN ROAD, DAVOREN PARK

DISCLAIMER

PLANS SHOWN ARE FOR MARKETING PURPOSES ONLY. ALL DIMENSIONS ARE APPROXIMATE AND NOT TO SCALE. THEY ARE SUBJECT TO ERRORS AND INACCURACIES AND NO LIABILITY WILL BE ACCEPTED. INTERESTED PARTIES SHOULD MAKE THEIR OWN ENQUIRIES.



IMAGES AND FLOORPLAN BY:
IN-HOUSE
 IMAGING
inhouseimaging.com.au