



## 245 Hogarth Road ELIZABETH GROVE SA

3 1 3

At Edge Realty we are committed to the health and well-being of our team, their families and our wider community. Please see the below steps in order to apply and view the property.

### Step 1

Please view the photos, floorplan, and digital 360 tour (if available) prior to submitting an application.

### Step 2

To apply for this property please go to [www.tenantoptions.com.au](http://www.tenantoptions.com.au).

### Step 3

If you are successfully pre-approved you will be contacted to arrange a private viewing of the property, this process can take up to 3 business days.

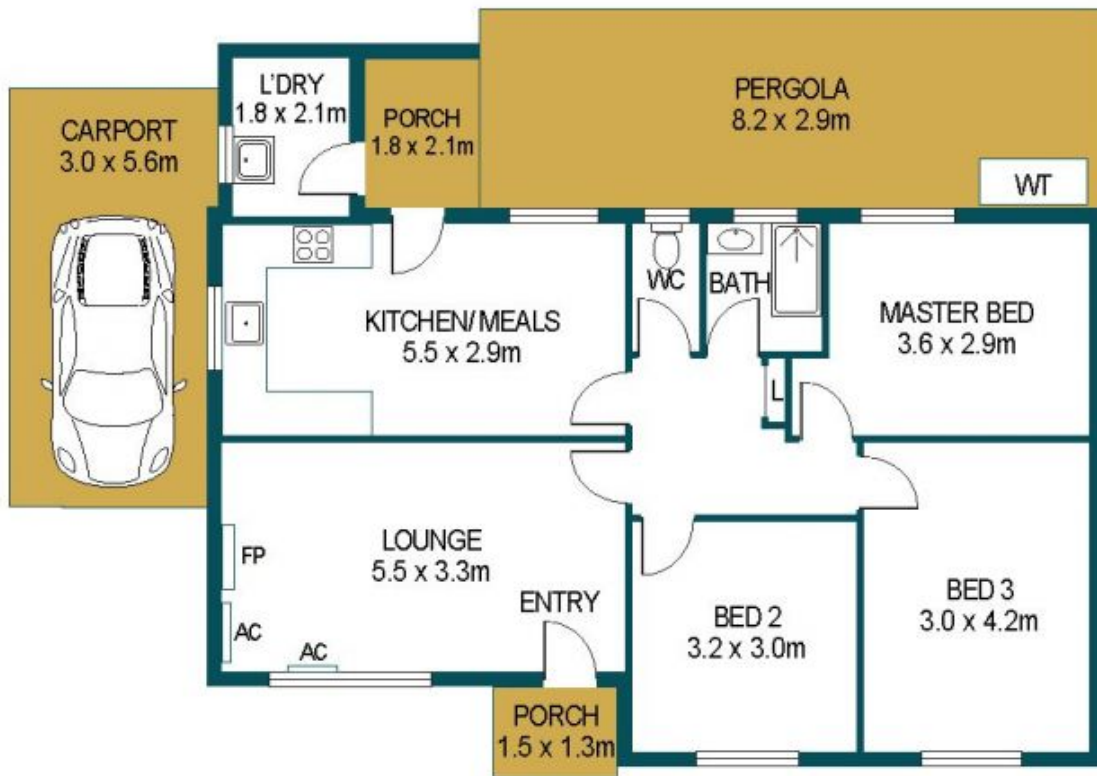
**Building Size** : 111 sqm  
**Land Size** : 823 sqm  
**View** : <https://www.edgerealty.com.au/lease/sa/north-north-east-suburbs/elizabeth-grove/residential/house/6529911>



**Emma Robinson**  
0497999951



**Kymba Zanker**  
0487888821



APPROXIMATE DIMENSIONS

LIVING:	87.7m <sup>2</sup>
GARAGE:	24.1m <sup>2</sup>
CARPORT:	16.8m <sup>2</sup>
PORCH:	5.7m <sup>2</sup>
PERGOLA:	23.8m <sup>2</sup>
TOTAL:	158.1m <sup>2</sup>

## 245 Hogarth Road, Elizabeth Grove

DISCLAIMER

PLANS SHOWN ARE FOR MARKETING PURPOSES ONLY, ALL DIMENSIONS ARE APPROXIMATE AND NOT TO SCALE. THEY ARE SUBJECT TO ERRORS AND INACCURACIES AND NO LIABILITY WILL BE ACCEPTED. INTERESTED PARTIES SHOULD MAKE THEIR OWN ENQUIRIES.



IMAGES AND FLOORPLAN BY:  
**IN-HOUSE**  
IMAGING  
inhouseimaging.com.au