



## 20 Brunel Drive MODBURY HEIGHTS SA

4  1  4 

\*For an in-depth look at this home, please click on the 3D tour for a virtual walk-through\*

Virtual Tour Link:  
<https://my.matterport.com/show/?m=yXkCdWTLrZK>

To submit an offer, please copy and paste this link into your browser: <https://airtable.com/shrBb12PXtTjyZAXm>

Mike Lao and Edge Realty are proud to present to the market this entertainer's haven. From the poolside patio to the open-plan layout and expansive alfresco, this is a must-see for anyone who loves to relax in style with friends and family.

There are four bedrooms and one bathroom, with a bath and separate toilet, plus plenty of living spaces inside and out. A bright and modern kitchen will delight those who love

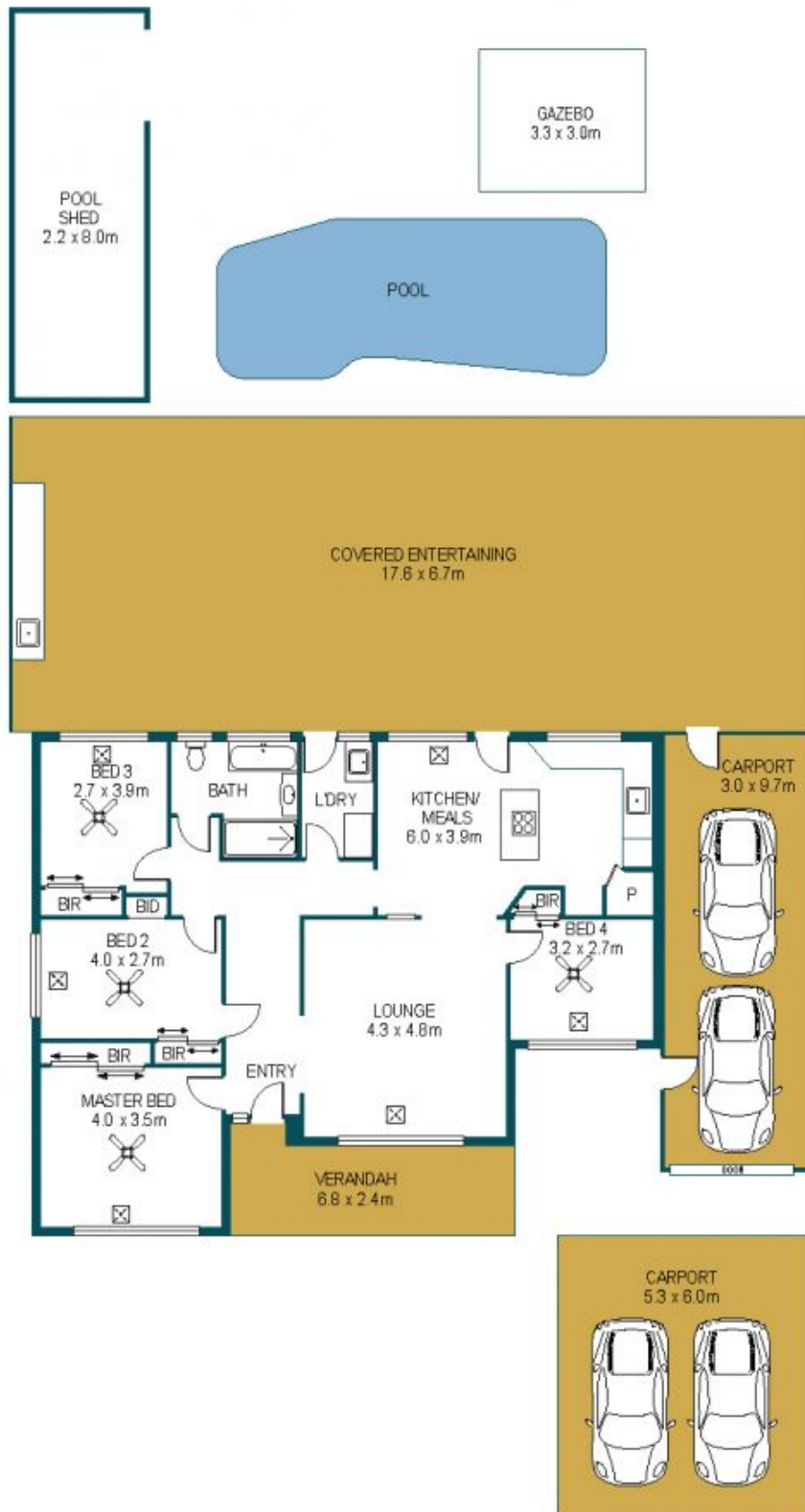
**Price** : \$ 580,000  
**Building Size** : 94 sqm  
**Land Size** : 640 sqm  
**View** : <https://www.edgerealty.com.au/sale/sa/north-north-east-suburbs/modbury-heights/residential/house/6535791>



**Mike Lao**  
0410390250



**Tyson Bennett**  
0437161997



APPROXIMATE DIMENSIONS

LIVING:	94.7m <sup>2</sup>
CARPORT:	60.9m <sup>2</sup>
ENTERTAIN:	117.9m <sup>2</sup>
VERANDAH:	16.3m <sup>2</sup>
GAZEBO:	9.9m <sup>2</sup>
SHED:	17.6m <sup>2</sup>
TOTAL:	317.3m <sup>2</sup>

## 20 BRUNEL DRIVE, MODBURY HEIGHTS

DISCLAIMER

PLANS SHOWN ARE FOR MARKETING PURPOSES ONLY. ALL DIMENSIONS ARE APPROXIMATE AND NOT TO SCALE. THEY ARE SUBJECT TO ERRORS AND INACCURACIES AND NO LIABILITY WILL BE ACCEPTED. INTERESTED PARTIES SHOULD MAKE THEIR OWN ENQUIRIES.



IMAGES AND FLOORPLAN BY:  
**IN-HOUSE**  
IMAGING  
[inhouseimaging.com.au](http://inhouseimaging.com.au)