

## 9 Watkin Street PARAFIELD GARDENS SA

3 2 2

\*For an in-depth look at this home, please click on the 3D tour for a virtual walk-through\*

Virtual Tour Link:  
<https://my.matterport.com/show/?m=oM4vmHURqpo>

To submit an offer, please copy and paste this link into your browser: <https://airtable.com/shrBb12PXtTjyZAXm>

Mike Lao and Edge Realty are proud to present to the market this spacious home offering idyllic living for the modern family. The layout is large and light-filled with plenty of flexibility to suit a wide range of lifestyles. Whether you love to entertain, relax with a good book or indulge your passion for gardening, this is a property with something for everyone.

The living spaces include a large lounge room, a meals

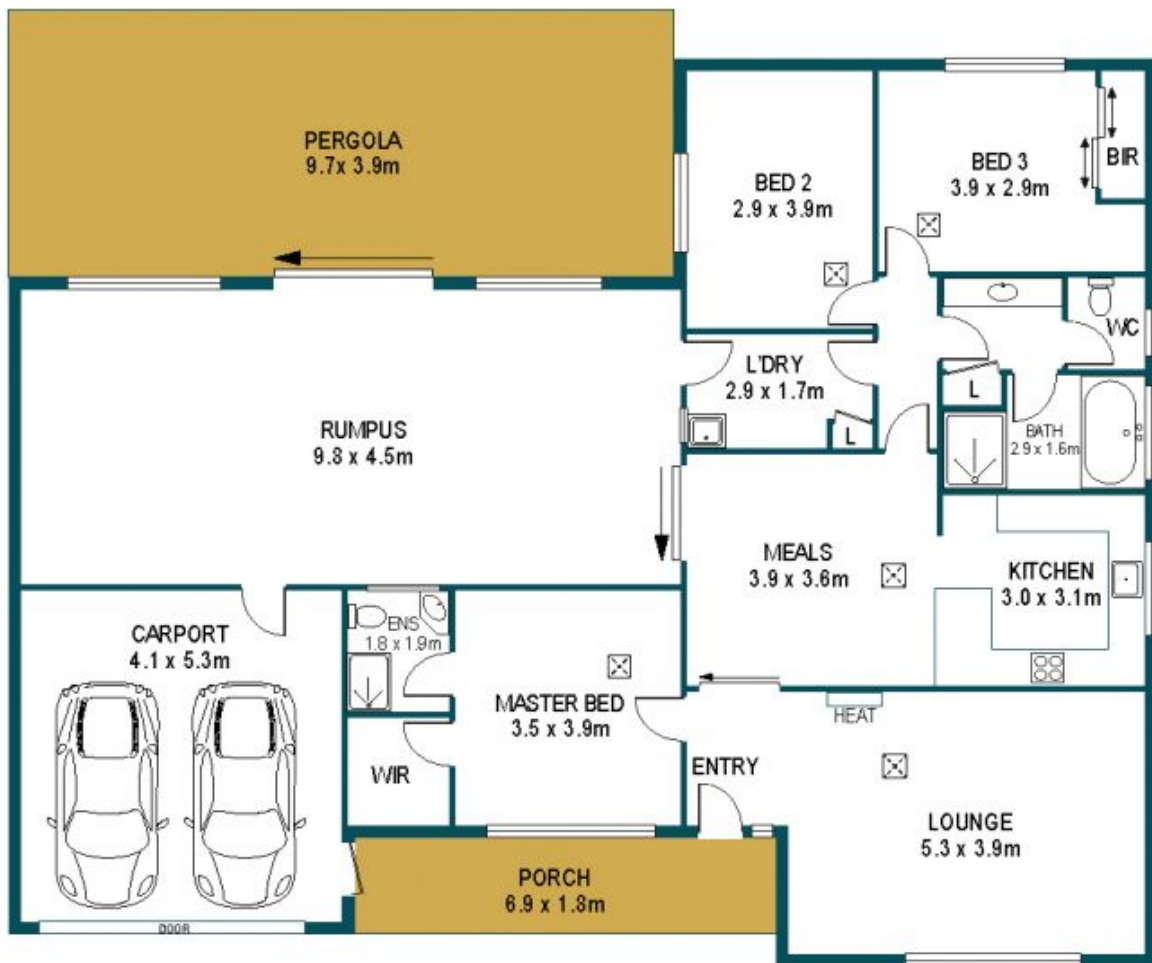
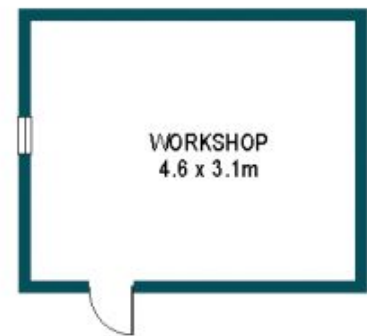
**Price** : \$ 445,000  
**Land Size** : 580 sqm  
**View** : <https://www.edgerealty.com.au/sale/sa/north-north-east-suburbs/parafield-gardens/residential/house/6547548>



**Mike Lao**  
0410390250



**Tom Dunstan**  
0429656820



APPROXIMATE DIMENSIONS

LIVING:	186.7m <sup>2</sup>
CARPORT:	21.7m <sup>2</sup>
PORCH:	12.4m <sup>2</sup>
PERGOLA:	37.8m <sup>2</sup>
WORKSHOP:	14.3m <sup>2</sup>
TOTAL:	272.9m <sup>2</sup>

## 9 WATKIN STREET, PARAFIELD GARDENS

DISCLAIMER

PLANS SHOWN ARE FOR MARKETING PURPOSES ONLY, ALL DIMENSIONS ARE APPROXIMATE AND NOT TO SCALE. THEY ARE SUBJECT TO ERRORS AND INACCURACIES AND NO LIABILITY WILL BE ACCEPTED. INTERESTED PARTIES SHOULD MAKE THEIR OWN ENQUIRIES.



IMAGES AND FLOORPLAN BY:  
**IN-HOUSE**  
IMAGING  
inhouseimaging.com.au