



5 Wattlebird Drive BURTON SA

3 2 2

To submit an offer, please copy and paste this link into your browser: <https://airtable.com/shrBb12PXtTjyZAXm>

Mike Lao and Edge Realty are proud to present to the market this charming home offering easy-care living for the modern family. There is plenty of space for everyone with three bedrooms, multiple living areas and a generous backyard where you can host friends in style.

The main bedroom complete with a walk in robe and ensuite is located at the front of the home along with a bonus living space that could be used as an inspired office, a playroom or an elegant retreat depending on your needs. The two guest bedrooms are housed in their own wing along with the central bathroom, with a bath, and the laundry with external access for complete convenience.

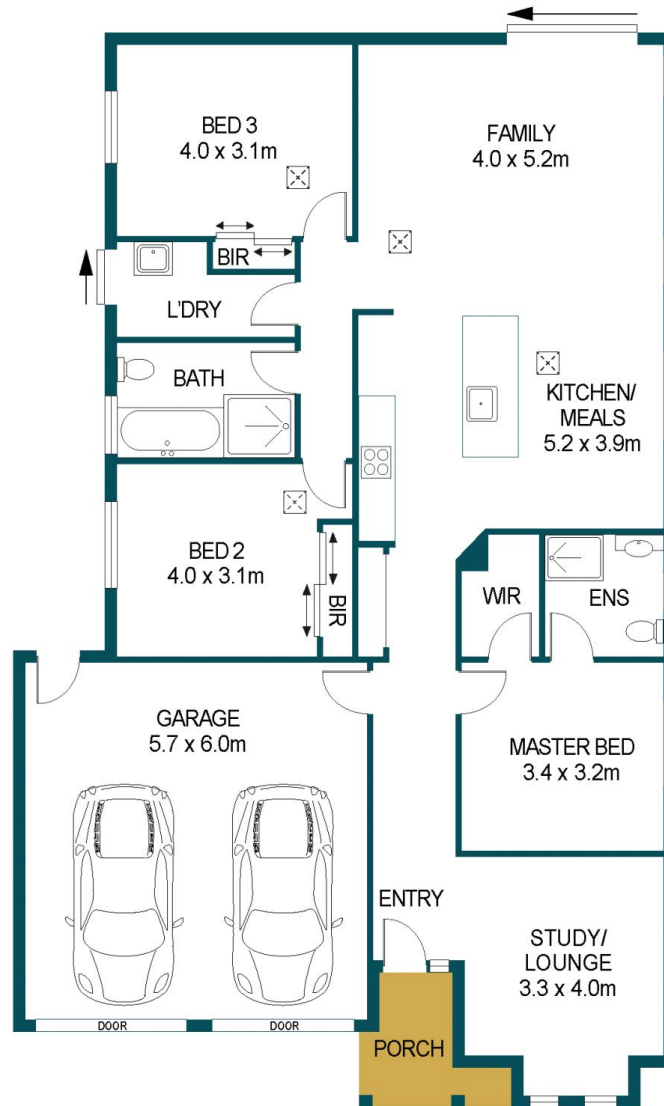
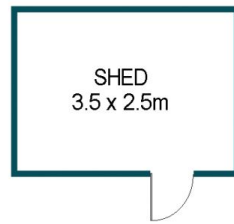
Price : \$ 420,000
Building Size : 130 sqm
Land Size : 376 sqm
View : <https://www.edgerealty.com.au/sale/sa/north-north-east-suburbs/burton/residential/house/6563445>



Mike Lao
0410390250



Tom Dunstan
0429656820



APPROXIMATE DIMENSIONS

LIVING:	130.1m ²
GARAGE:	34.2m ²
PORCH :	2.8m ²
SHED:	8.8m ²
TOTAL:	175.8m ²

5 WATTLEBIRD DRIVE, BURTON

DISCLAIMER

PLANS SHOWN ARE FOR MARKETING PURPOSES ONLY, ALL DIMENSIONS ARE APPROXIMATE AND NOT TO SCALE. THEY ARE SUBJECT TO ERRORS AND INACCURACIES AND NO LIABILITY WILL BE ACCEPTED. INTERESTED PARTIES SHOULD MAKE THEIR OWN ENQUIRIES.



IMAGES AND FLOORPLAN BY:
IN-HOUSE
IMAGING
inhouseimaging.com.au