



23 Armagh Crescent SALISBURY DOWNS SA

4 2 5

For an in-depth look at this home, please click on the 3D tour for a virtual walk-through

Virtual Tour Link:
<https://my.matterport.com/show/?m=qY5fMBEzMkh>

To submit an offer, please copy and paste this link into your browser: <https://airtable.com/shrBb12PXtTjyZAXm>

Mike Lao and Edge Realty are proud to present to the market this meticulously renovated family home. Anyone looking for an opportunity to simply move in, unpack and relax with nothing left to do is sure to fall head over heels for this Salisbury Downs stunner.

From the moment you step inside, it's immediately clear this home has been impeccably updated with the modern family in mind. Gleaming tile floors flow throughout the

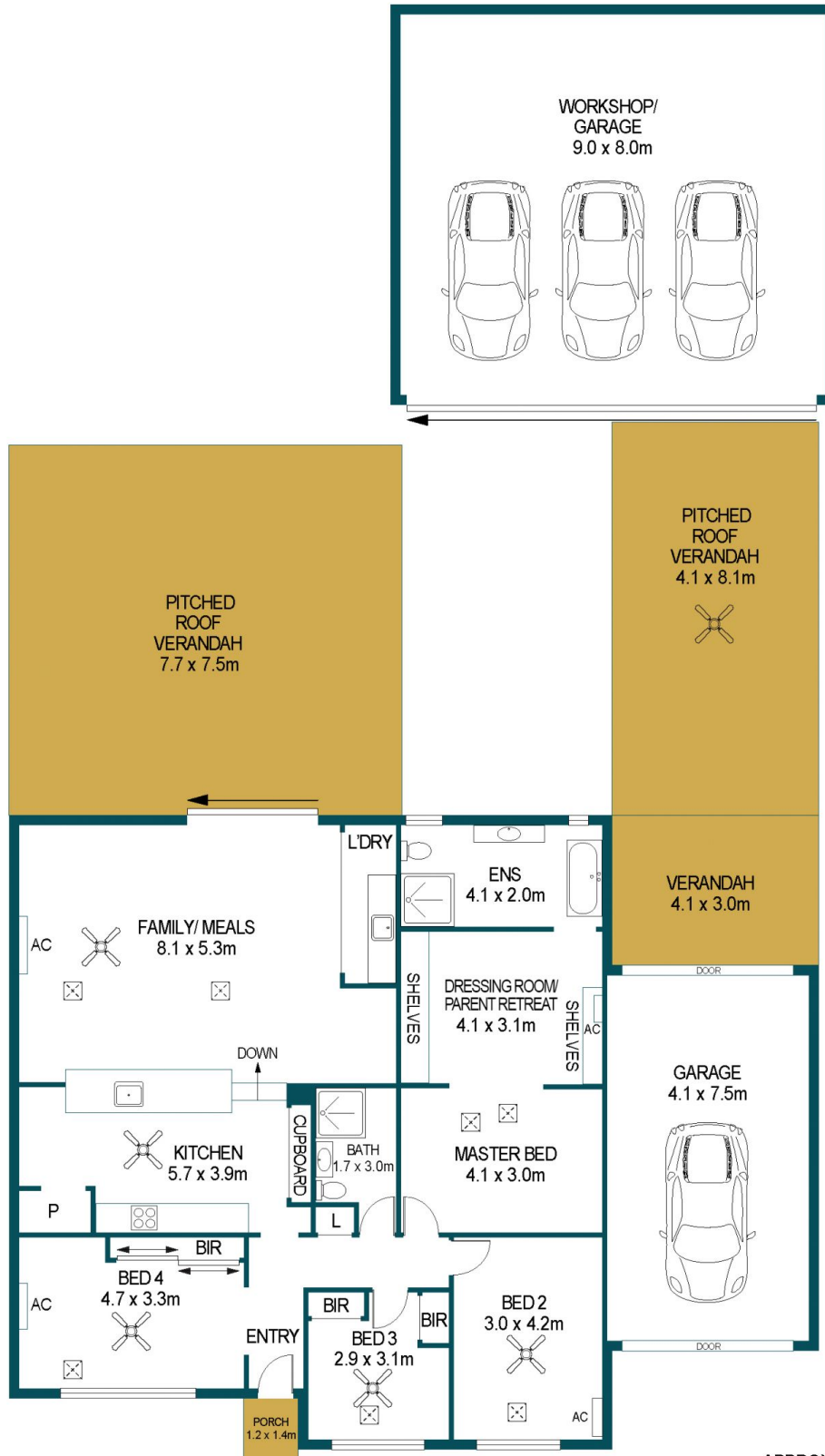
Price : \$ 582,000
Building Size : 151 sqm
Land Size : 700 sqm
View : <https://www.edgerealty.com.au/sale/sa/north-north-east-suburbs/salisbury-downs/residential/house/6563530>



Mike Lao
0410390250



Tyson Bennett
0437161997



APPROXIMATE DIMENSIONS	
LIVING:	151.0m ²
GARAGE:	102.8m ²
PORCH:	1.7m ²
VERANDAH:	103.3m ²
TOTAL:	358.8m ²

23 ARMAGH CRESCENT, SALISBURY DOWNS

DISCLAIMER

PLANS SHOWN ARE FOR MARKETING PURPOSES ONLY, ALL DIMENSIONS ARE APPROXIMATE AND NOT TO SCALE. THEY ARE SUBJECT TO ERRORS AND INACCURACIES AND NO LIABILITY WILL BE ACCEPTED. INTERESTED PARTIES SHOULD MAKE THEIR OWN ENQUIRIES.



IMAGES AND FLOORPLAN BY:
IN-HOUSE
IMAGING
inhouseimaging.com.au