



2/6 Leith Court WYNN VALE SA

3  1  1 

For an in-depth look at this home, please click on the 3D tour for a virtual walk-through

Virtual Tour Link:
<https://my.matterport.com/show/?m=bwRZciirK8E>

To submit an offer, please copy and paste this link into your browser: <https://airtable.com/shrBb12PXtTjyZAXm>

Mike Lao and Edge Realty are proud to present to the market this standalone townhouse within a peaceful and friendly community. Whether you're a first-time buyer, a growing family or an astute house-hunter on the hunt for your next investment, this is an easy-care home that will surely tick all the boxes.

The two-storey layout is modern, functional and inviting with the lower level dedicated to spacious and comfortable

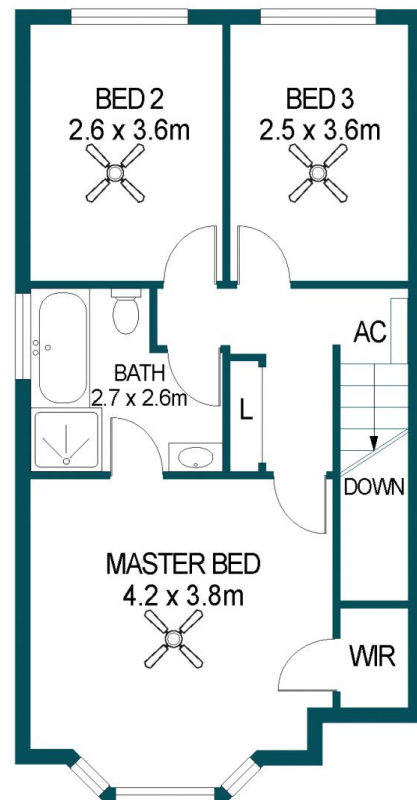
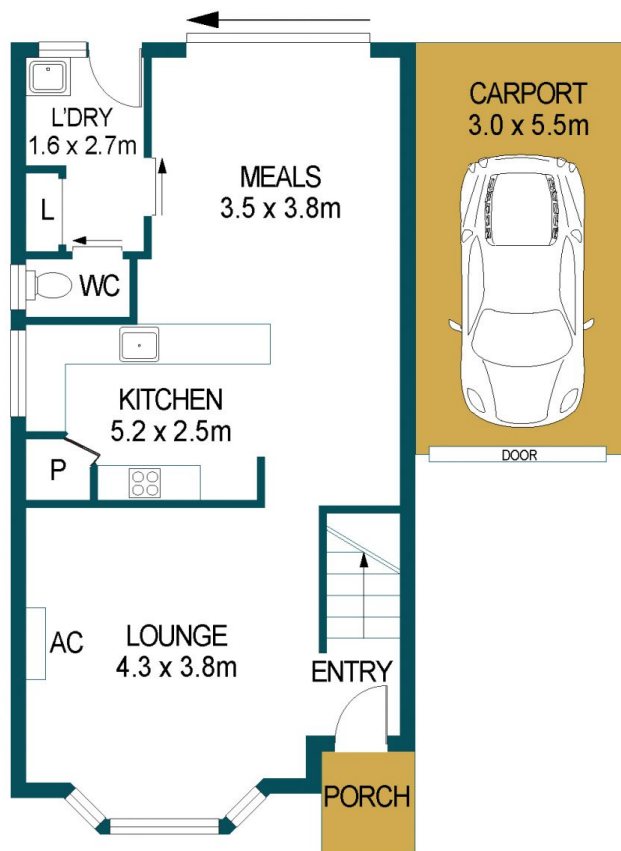
Price : \$ 390,000
Building Size : 107 sqm
Land Size : 201 sqm
View : <https://www.edgerealty.com.au/sale/sa/north-north-east-suburbs/wynn-vale/residential/townhouse/6580222>



Mike Lao
0410390250



Corey Wilkop
0447888444



2/6 LEITH COURT, WYNN VALE

APPROXIMATE DIMENSIONS

LIVING:	107.1m ²
CARPORT:	16.5m ²
SHED:	1.2m ²
TOTAL:	124.8m ²

DISCLAIMER

PLANS SHOWN ARE FOR MARKETING PURPOSES ONLY, ALL DIMENSIONS ARE APPROXIMATE AND NOT TO SCALE. THEY ARE SUBJECT TO ERRORS AND INACCURACIES AND NO LIABILITY WILL BE ACCEPTED. INTERESTED PARTIES SHOULD MAKE THEIR OWN ENQUIRIES.



IMAGES AND FLOORPLAN BY:
IN-HOUSE
IMAGING
inhouseimaging.com.au