



## 44 Greenwood Crescent SMITHFIELD PLAINS SA

3 1 5

To submit an offer, please copy and paste this link into your browser: <https://airtable.com/shrBb12PXtTjyZAXm>

Please note photography of property was taken March 2017 and are being reused as the property is currently tenanted.

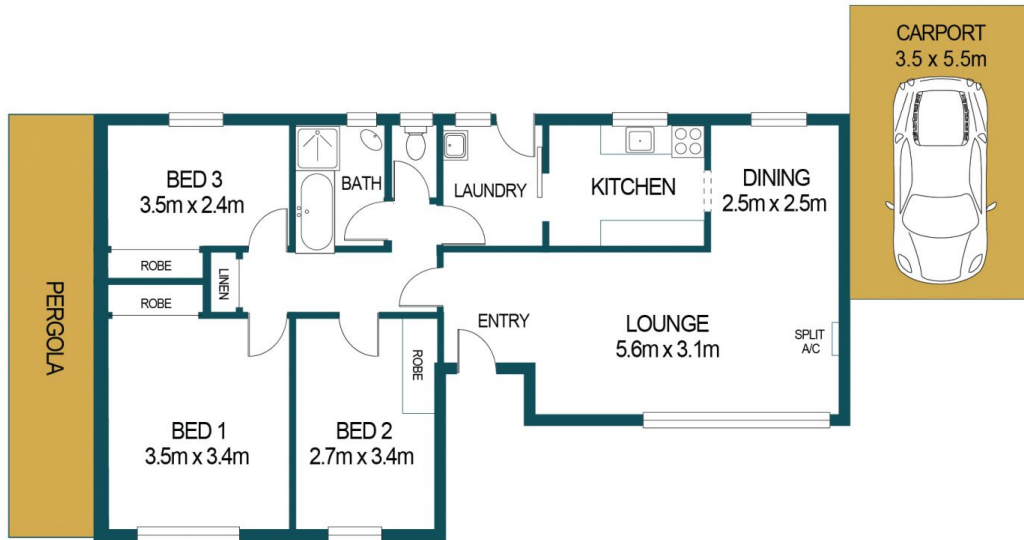
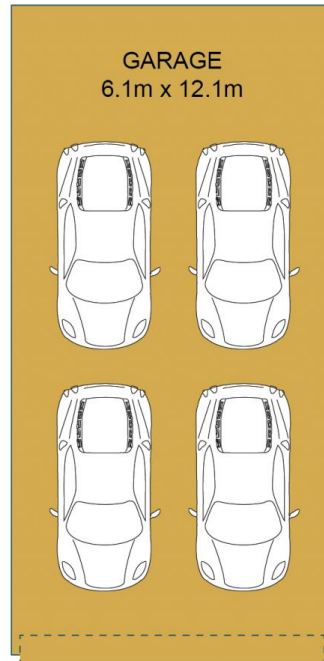
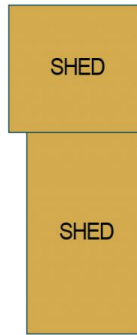
Stephen Legierski and Edge Realty are proud to present to the market this charming family home with unlimited future potential. Move in and enjoy, update and make your own or investigate future development potential, the sky's the limit when it comes to 44 Greenwood Crescent.

This low-maintenance property will perfectly complement any investment portfolio with a current fixed lease of \$270 per week in place until 08.11.2021 for instant returns!

**Price** : \$ 270,000  
**Building Size** : 101 sqm  
**Land Size** : 670 sqm  
**View** : <https://www.edgerealty.com.au/sale/sa/north-north-east-suburbs/smithfield-plains/residential/house/6580392>



**Stephen Legierski**  
0438888114



APPROXIMATE DIMENSIONS

LIVING:	101.89m <sup>2</sup>
CARPORT:	19.25m <sup>2</sup>
TOTAL:	121.14m <sup>2</sup>

## 44 GREENWOOD CRESCENT, SMITHFIELD PLAINS

DISCLAIMER

PLANS SHOWN ARE FOR MARKETING PURPOSES ONLY. ALL DIMENSIONS ARE APPROXIMATE AND NOT TO SCALE. THEY ARE SUBJECT TO ERRORS AND INACCURACIES AND NO LIABILITY WILL BE ACCEPTED. INTERESTED PARTIES SHOULD MAKE THEIR OWN ENQUIRIES.