



11 Winston Crescent HILLBANK SA

3  1  2 

For an in-depth look at this home, please click on the 3D tour for a virtual walk-through

Virtual Tour Link:
<https://my.matterport.com/show/?m=p3vgznSBr12>

To submit an offer, please follow this link:
<https://airtable.com/shrBb12PXtTjyZAXm>

Mike Lao and Edge Realty are proud to present to the market your dream family home where comfort and convenience are absolutely assured. This gorgeous abode stands proud on a large 855sqm block with show-stopping sunset views that you will love to sit and admire for hours on end.

The single-storey layout is spacious and light-filled with generous living zones, three bedrooms and a central

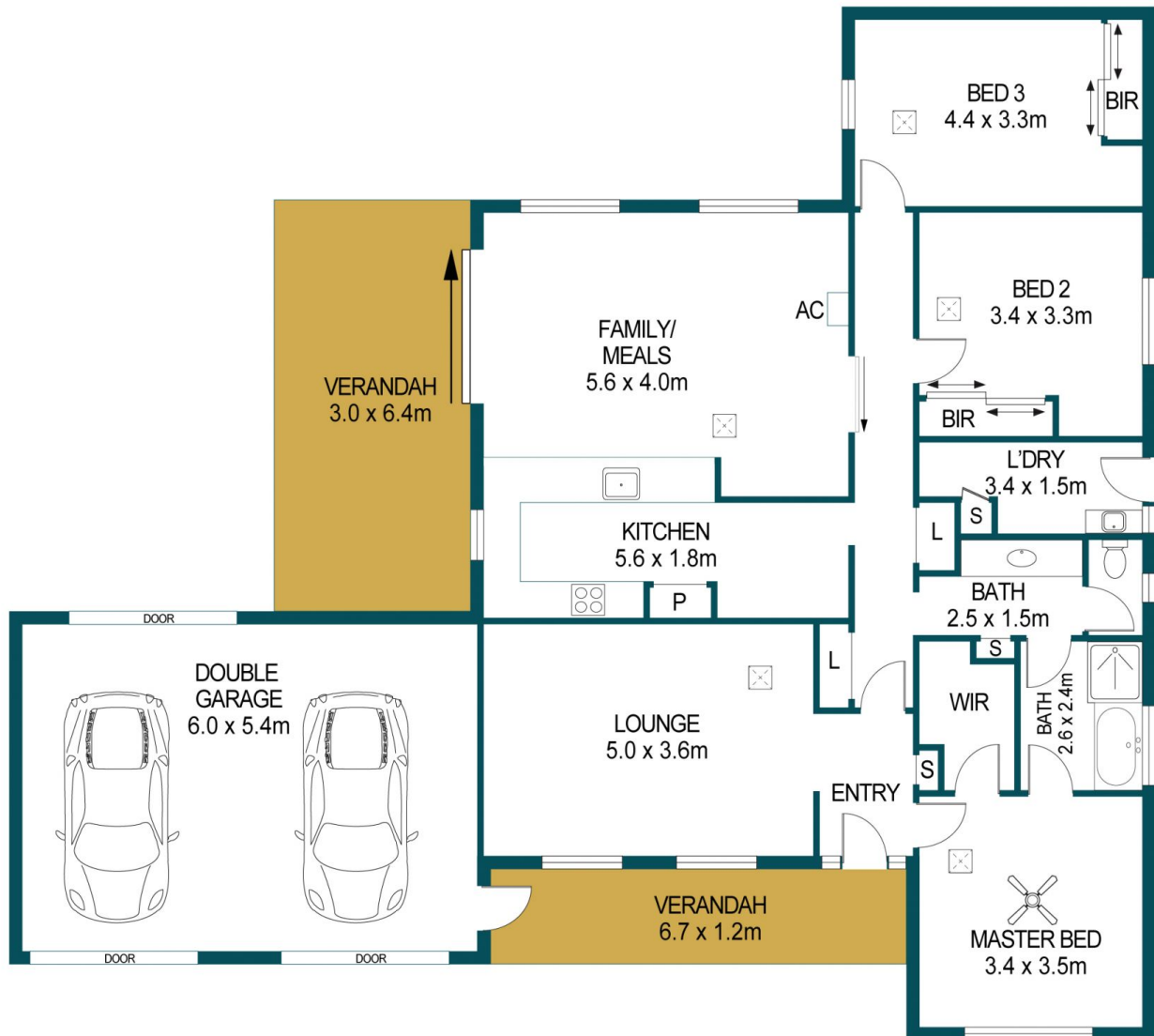
Building Size : 138 sqm
Land Size : 855 sqm
View : <https://www.edgerealty.com.au/sale/sa/north-north-east-suburbs/hillbank/residential/house/6592007>



Mike Lao
 0410390250



Tyson Bennett
 0437161997



11 WINSTON CRESCENT, HILLBANK

APPROXIMATE DIMENSIONS	
LIVING:	138.9m ²
GARAGE:	32.4m ²
VERANDAH:	27.3m ²
TOTAL:	198.6m ²

DISCLAIMER

PLANS SHOWN ARE FOR MARKETING PURPOSES ONLY, ALL DIMENSIONS ARE APPROXIMATE AND NOT TO SCALE. THEY ARE SUBJECT TO ERRORS AND INACCURACIES AND NO LIABILITY WILL BE ACCEPTED. INTERESTED PARTIES SHOULD MAKE THEIR OWN ENQUIRIES.



IMAGES AND FLOORPLAN BY:
IN-HOUSE
IMAGING
inhouseimaging.com.au