



### 12/7 Broughton Place SALISBURY SA

3  1  1 

\*For an in-depth look at this home, please click on the 3D tour for a virtual walk-through\*

Virtual Tour Link:  
<https://my.matterport.com/show/?m=mnG6vxZ6dEu>

To submit an offer, please copy and paste this link into your browser: <https://airtable.com/shrBb12PXtTjyZAXm>

Mike Lao and Edge Realty are proud to present to the market this comfortable home that's sure to impress first-time buyers, young families and eager renovators. Depending on your vision, you could move in and enjoy the property as-is or perhaps you'd like to make some minor cosmetic updates and create the home of your dreams, the choice is all yours (STCA).

A large and open-plan lounge and dining room are set just

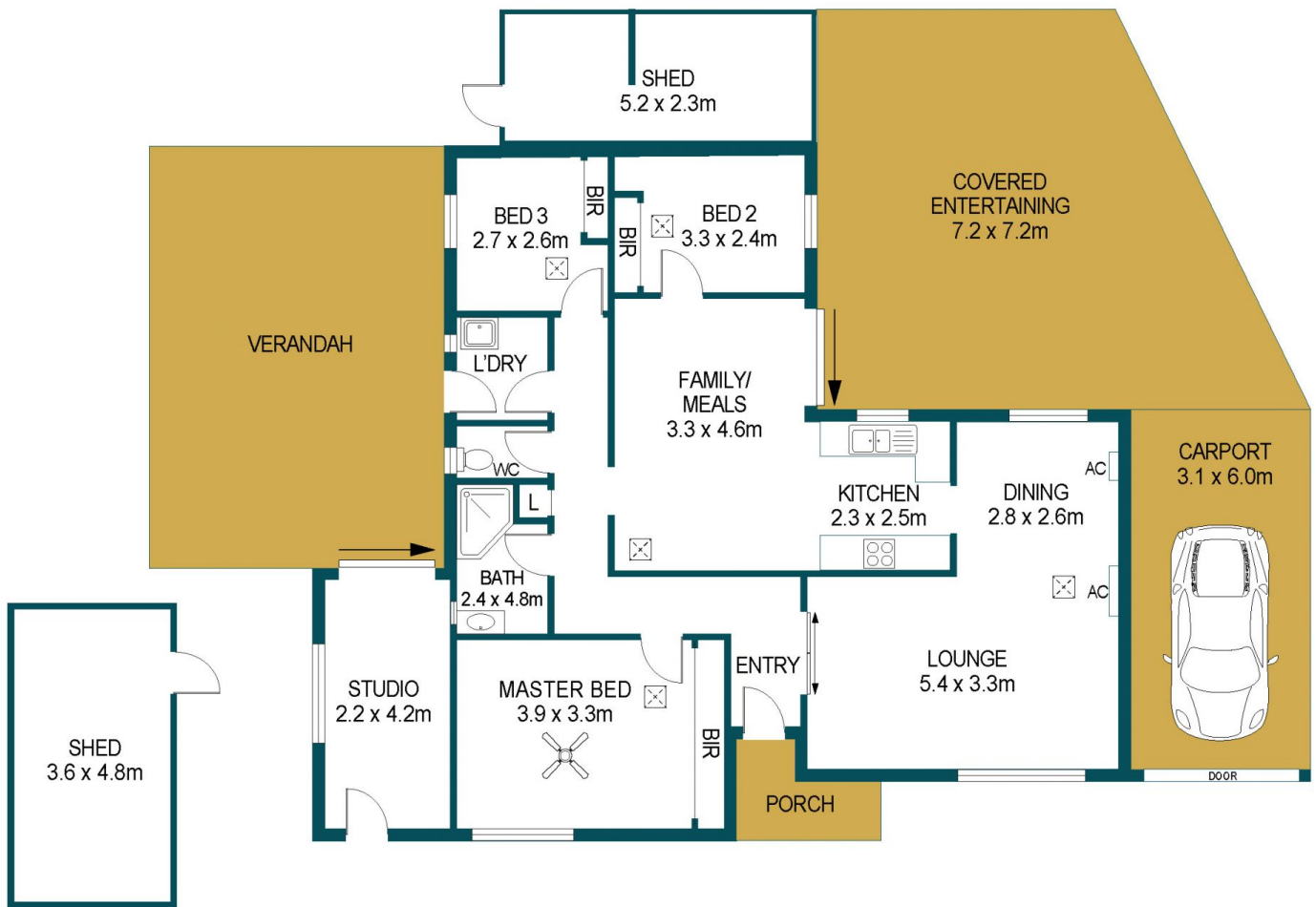
**Price** : \$ 311,000  
**Building Size** : 114 sqm  
**Land Size** : 500 sqm  
**View** : <https://www.edgerealty.com.au/sale/sa/north-north-east-suburbs/salisbury/residential/house/6601312>



**Mike Lao**  
 0410390250



**Tyson Bennett**  
 0437161997



## 12/7 BROUGHTON PLACE, SALISBURY

APPROXIMATE DIMENSIONS	
LIVING:	114.3m <sup>2</sup>
ENTERTAINING:	51.8m <sup>2</sup>
VERANDAH:	37.2m <sup>2</sup>
SHED:	12.0m <sup>2</sup>
PORCH:	4.3m <sup>2</sup>
CARPORT:	18.6m <sup>2</sup>
TOTAL:	238.2m <sup>2</sup>

### DISCLAIMER

PLANS SHOWN ARE FOR MARKETING PURPOSES ONLY, ALL DIMENSIONS ARE APPROXIMATE AND NOT TO SCALE. THEY ARE SUBJECT TO ERRORS AND INACCURACIES AND NO LIABILITY WILL BE ACCEPTED. INTERESTED PARTIES SHOULD MAKE THEIR OWN ENQUIRIES.



IMAGES AND FLOORPLAN BY:  
**IN-HOUSE**  
IMAGING  
[inhouseimaging.com.au](http://inhouseimaging.com.au)