

30 William Drive DAVOREN PARK SA

3  2  1 

For an in-depth look at this home, please click on the 3D tour for a virtual walk-through

Virtual Tour Link:
<https://my.matterport.com/show/?m=KshRh84K2pK>

To submit an offer, please copy and paste this link into your browser: <https://airtable.com/shrBb12PXtTjyZAXm>

Mike Lao and Edge Realty are proud to present to the market this easy-care, centrally located home that will delight a wide range of buyers. Downsizers, first-time buyers, young families and investors alike will appreciate the low-maintenance lifestyle this modern home offers.

There are three bedrooms including the owner's suite with a beautiful bay window, a walk-in robe and a private ensuite. The two guest bedrooms are serviced by a central

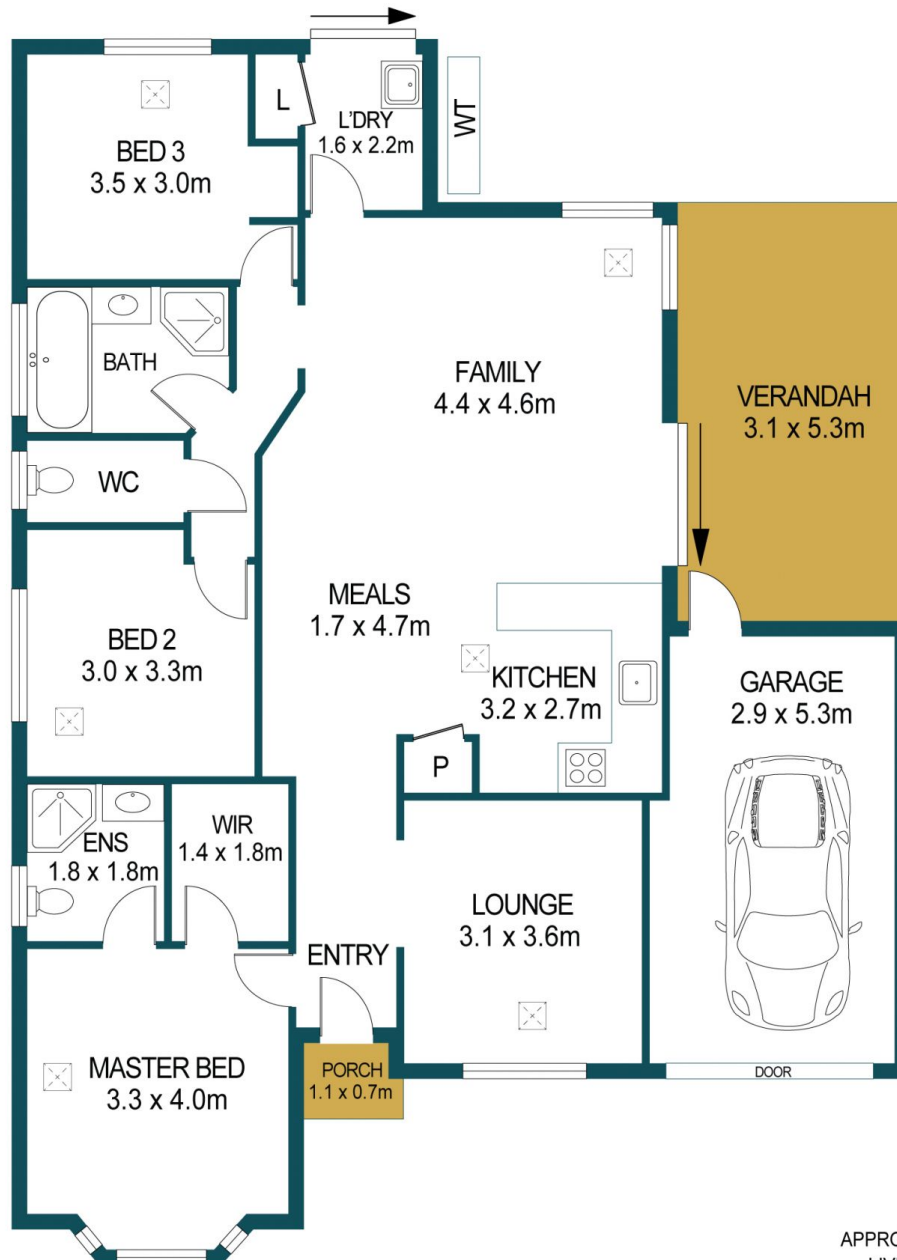
Price : \$ 310,000
Building Size : 125 sqm
Land Size : 358 sqm
View : <https://www.edgerealty.com.au/sale/sa/north-north-east-suburbs/davoren-park/residential/house/6690880>



Mike Lao
0410390250



Corey Wilkop
0447888444



APPROXIMATE DIMENSIONS	
LIVING:	125.3m ²
GARAGE:	15.3m ²
SHED:	2.6m ²
PORCH:	0.8m ²
VERANDAH:	16.4m ²
TOTAL:	160.4m ²

30 WILLIAM DRIVE, DAVOREN PARK

DISCLAIMER

PLANS SHOWN ARE FOR MARKETING PURPOSES ONLY. ALL DIMENSIONS ARE APPROXIMATE AND NOT TO SCALE. THEY ARE SUBJECT TO ERRORS AND INACCURACIES AND NO LIABILITY WILL BE ACCEPTED. INTERESTED PARTIES SHOULD MAKE THEIR OWN ENQUIRIES.



IMAGES AND FLOORPLAN BY:
IN-HOUSE
IMAGING
inhouseimaging.com.au