



48 Dexter Drive SALISBURY EAST SA

4 2 4

For an in-depth look at this home, please click on the 3D tour for a virtual walk-through

Virtual Tour Link: <https://my.matterport.com/show/?m=n1oLNqnZeek>

To submit an offer, please copy and paste this link into your browser: <https://airtable.com/shrBb12PXtTjyZAXm>

Mike Lao, Tom Dunstan and Edge Realty are proud to present to the market this unique property offering comfortable dual living with a private granny flat. Whether you're looking to accommodate extended family or provide an idyllic place for guests, this Salisbury East home has a versatile floorplan to suit your lifestyle.

The primary solid brick residence is generous and well designed with multiple living spaces for you to enjoy. A

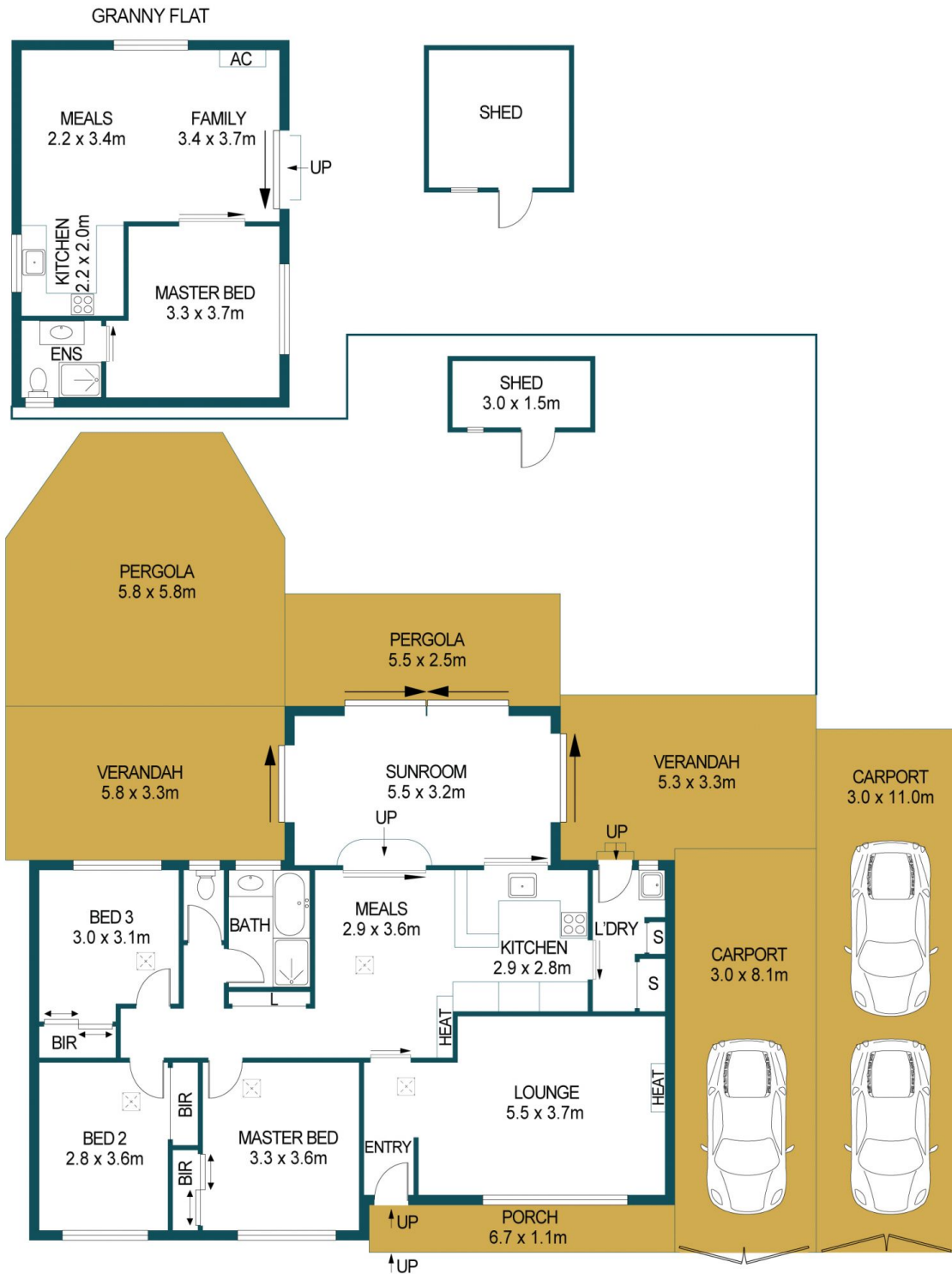
Price : \$ 560,000
Building Size : 160 sqm
Land Size : 780 sqm
View : <https://www.edgerealty.com.au/sale/sa/north-north-east-suburbs/salisbury-east/residential/house/6813975>



Mike Lao
0410390250



Tyson Bennett
0437161997



APPROXIMATE DIMENSIONS	
LIVING:	160.2m ²
CARPORT:	57.3m ²
SHED/PORCH:	21.4m ²
PERGOLA:	43.8m ²
VERANDAH:	38.1m ²
TOTAL:	320.8m ²

48 DEXTER DRIVE, SALISBURY EAST

DISCLAIMER

PLANS SHOWN ARE FOR MARKETING PURPOSES ONLY, ALL DIMENSIONS ARE APPROXIMATE AND NOT TO SCALE. THEY ARE SUBJECT TO ERRORS AND INACCURACIES AND NO LIABILITY WILL BE ACCEPTED. INTERESTED PARTIES SHOULD MAKE THEIR OWN ENQUIRIES.



IMAGES AND FLOORPLAN BY:
IN-HOUSE
IMAGING
inhouseimaging.com.au