



### 19 Parkview Drive BLAKEVIEW SA

3  1  1 

\*For an in-depth look at this home, please click on the 3D tour for a virtual walk-through\*

Virtual Tour Link:  
<https://my.matterport.com/show/?m=Y8KbifsnkVV>

To submit an offer, please copy and paste this link into your browser: <https://airtable.com/shrBb12PXtTjyZAXm>

Mike Lao, Tyson Bennett and Edge Realty are proud to present to the market this charming abode offering relaxed living in an enviable location. You'll enjoy easy access to all the shops, schools and parks this region has to offer while relishing the peace and privacy of this move-in-ready abode.

The layout is light-filled and modern with three bedrooms, one bathroom and multiple gathering spaces for easy-care

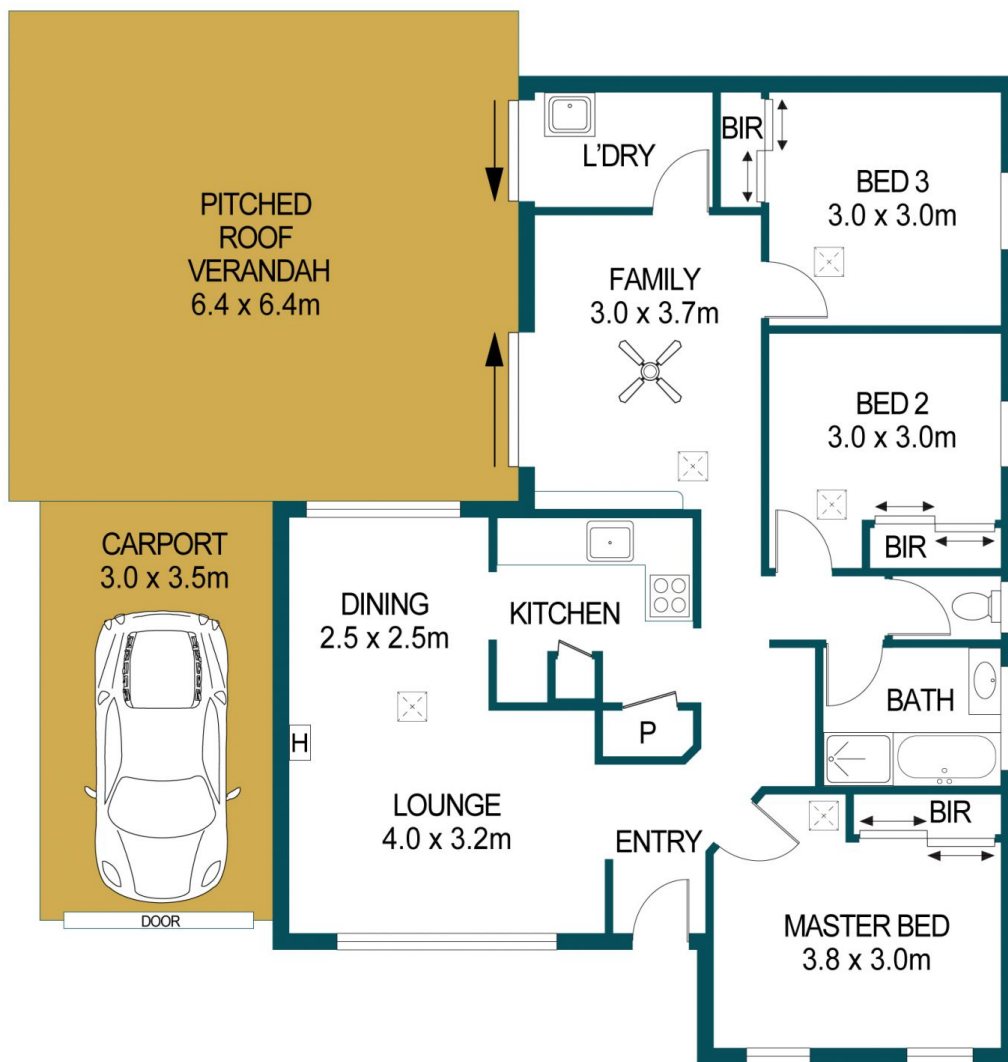
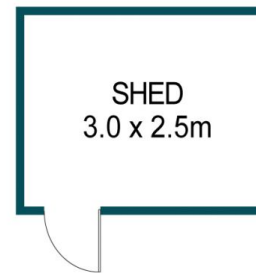
**Price** : \$ 366,950  
**Building Size** : 89 sqm  
**Land Size** : 430 sqm  
**View** : <https://www.edgerealty.com.au/sale/sa/north-north-east-suburbs/blakeview/residential/house/6814046>



**Mike Lao**  
0410390250



**Tyson Bennett**  
0437161997



APPROXIMATE DIMENSIONS

LIVING:	89.6m <sup>2</sup>
CARPORT:	10.5m <sup>2</sup>
VERANDAH:	41.0m <sup>2</sup>
SHED:	7.5m <sup>2</sup>
TOTAL:	148.6m <sup>2</sup>

## 19 PARKVIEW DRIVE, BLAKEVIEW

DISCLAIMER

PLANS SHOWN ARE FOR MARKETING PURPOSES ONLY, ALL DIMENSIONS ARE APPROXIMATE AND NOT TO SCALE. THEY ARE SUBJECT TO ERRORS AND INACCURACIES AND NO LIABILITY WILL BE ACCEPTED. INTERESTED PARTIES SHOULD MAKE THEIR OWN ENQUIRIES.



IMAGES AND FLOORPLAN BY:  
**IN-HOUSE**  
IMAGING  
[inhouseimaging.com.au](http://inhouseimaging.com.au)