



### 5 Everard Avenue ANDREWS FARM SA

3  1  1 

\*For an in-depth look at this home, please click on the 3D tour for a virtual walk-through\*

Virtual Tour Link:  
<https://my.matterport.com/show/?m=AhLCi9xaJX5>

To submit an offer, please copy and paste this link into your browser: <https://airtable.com/shrBb12PXtTjyZAXm>

Mike Lao, Tyson Bennett and Edge Realty are proud to present to the market this beautiful family home offering relaxed living in a central location. Landscaped gardens, mature trees and a brick paver path lead to the front door where a heritage-inspired facade provides a warm welcome to this must-see abode.

Step inside where gorgeous slate flooring flows underfoot paired with crisp white walls and timber trim for a cool retro

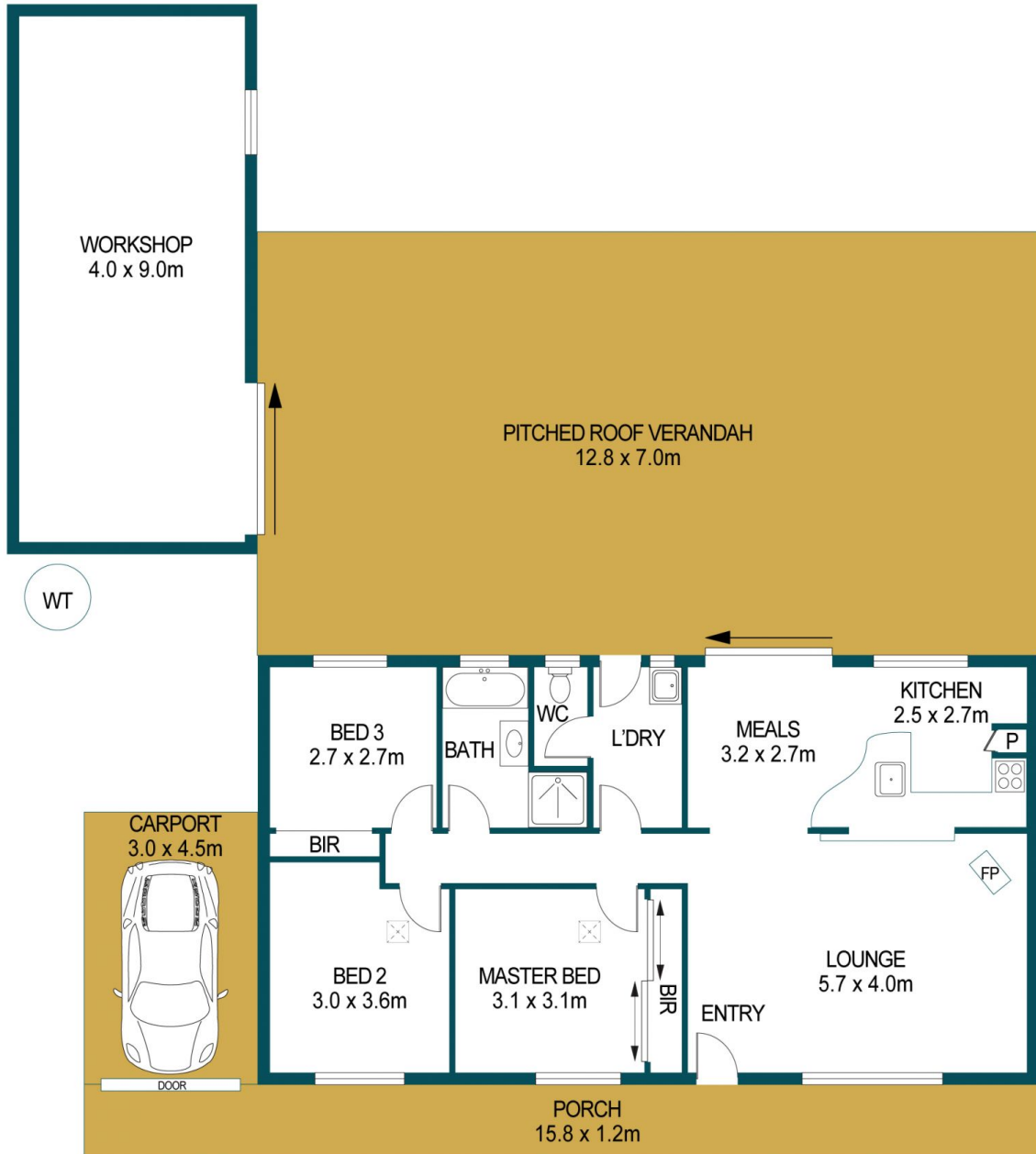
**Price** : \$ 392,000  
**Building Size** : 96 sqm  
**Land Size** : 610 sqm  
**View** : <https://www.edgerealty.com.au/sale/sa/north-north-east-suburbs/andrews-farm/residential/house/6814262>



**Mike Lao**  
0410390250



**Tyson Bennett**  
0437161997



#### APPROXIMATE DIMENSIONS

LIVING:	96.3m <sup>2</sup>
PORCH:	19.0m <sup>2</sup>
CARPORT:	13.5m <sup>2</sup>
VERANDAH:	89.6m <sup>2</sup>
WORKSHOP:	36.0m <sup>2</sup>
TOTAL:	254.4m <sup>2</sup>

## 5 EVERARD AVENUE, ANDREWS FARM

#### DISCLAIMER

PLANS SHOWN ARE FOR MARKETING PURPOSES ONLY, ALL DIMENSIONS ARE APPROXIMATE AND NOT TO SCALE. THEY ARE SUBJECT TO ERRORS AND INACCURACIES AND NO LIABILITY WILL BE ACCEPTED. INTERESTED PARTIES SHOULD MAKE THEIR OWN ENQUIRIES.



IMAGES AND FLOORPLAN BY:  
**IN-HOUSE**  
IMAGING  
[inhouseimaging.com.au](http://inhouseimaging.com.au)