



6 Kareda Court HILLBANK SA

3 1 2

To submit an offer, please copy and paste this link into your browser: <https://airtable.com/shrBb12PXtTjyZAXm>

Mike Lao, Tyson Bennett and Edge Realty RLA256385 are proud to present to the market a home that's sure to tick every box on your family's wishlist. This three-bedroom, one-bathroom abode offers spacious and comfortable living on a good-size lot with room to entertain and a prized location close to Gould Creek.

This low-maintenance property is currently tenanted with a fixed lease of \$340 per week in place until 03.05.2022 and will perfectly complement any investment portfolio. The prized location ensures you'll never be short on tenants eager to call this property home.

Arrive home to discover living spaces full of light and life.

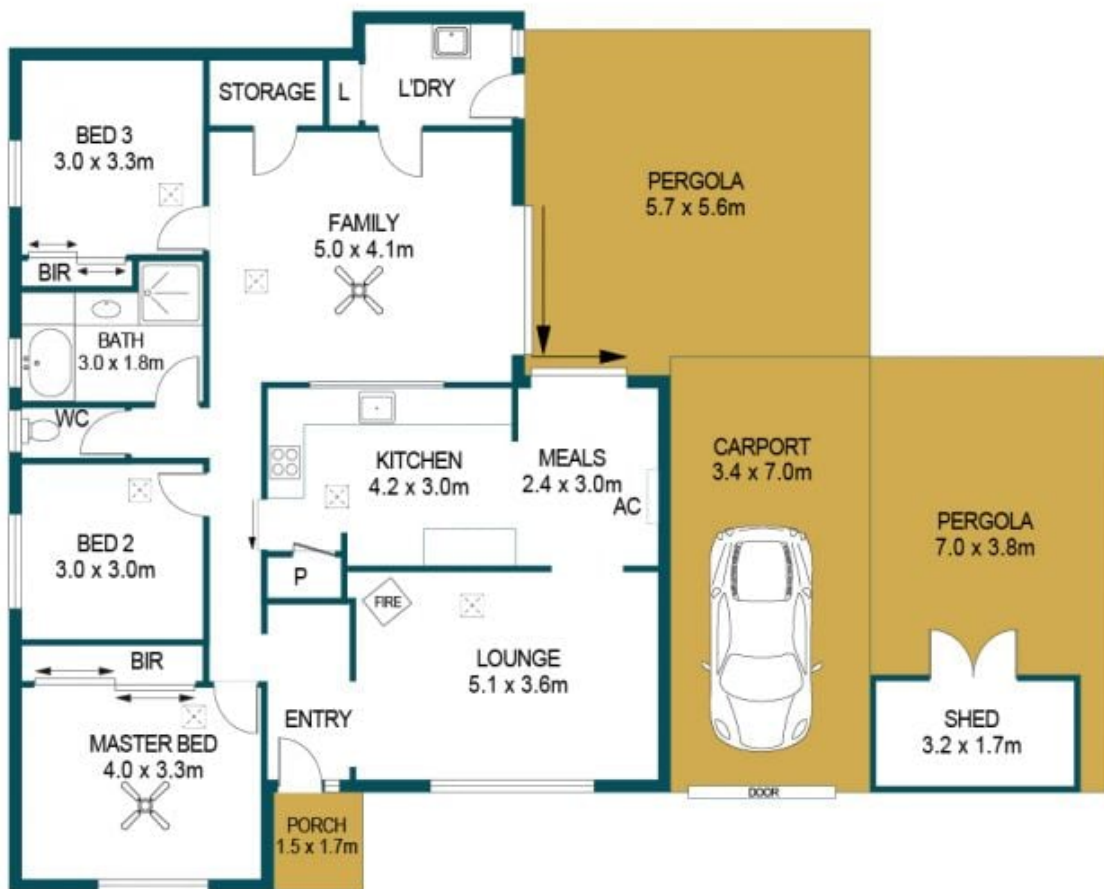
Price : \$ 422,000
Building Size : 124 sqm
Land Size : 620 sqm
View : <https://www.edgerealty.com.au/sale/sa/north-north-east-suburbs/hillbank/residential/house/6943698>



Mike Lao
0410390250



Tyson Bennett
0437161997



APPROXIMATE DIMENSIONS

LIVING:	124.0m ²
CARPORT:	23.8m ²
PORCH:	2.6m ²
PERGOLA:	58.5m ²
SHED:	15.4m ²
TOTAL:	224.3m ²

6 KAREDA COURT, HILLBANK

DISCLAIMER

PLANS SHOWN ARE FOR MARKETING PURPOSES ONLY. ALL DIMENSIONS ARE APPROXIMATE AND NOT TO SCALE. THEY ARE SUBJECT TO ERRORS AND INACCURACIES AND NO LIABILITY WILL BE ACCEPTED. INTERESTED PARTIES SHOULD MAKE THEIR OWN ENQUIRIES.



IMAGES AND FLOORPLAN BY:
IN-HOUSE
IMAGING
inhouseimaging.com.au