



### 30 Mantissa Road SALISBURY NORTH SA

3  1  3 

\*For an in-depth look at this home, please click on the 3D tour for a virtual walk-through\*

Virtual Tour Link:  
<https://my.matterport.com/show/?m=TLgbLgtGAmf>

To submit an offer, please copy and paste this link into your browser: <https://airtable.com/shrBb12PXtTjyZAXm>

**Price** : \$ 401,000  
**Building Size** : 92 sqm  
**Land Size** : 760 sqm  
**View** : <https://www.edgerealty.com.au/sale/sa/north-north-east-suburbs/salisbury-north/residential/house/6952728>

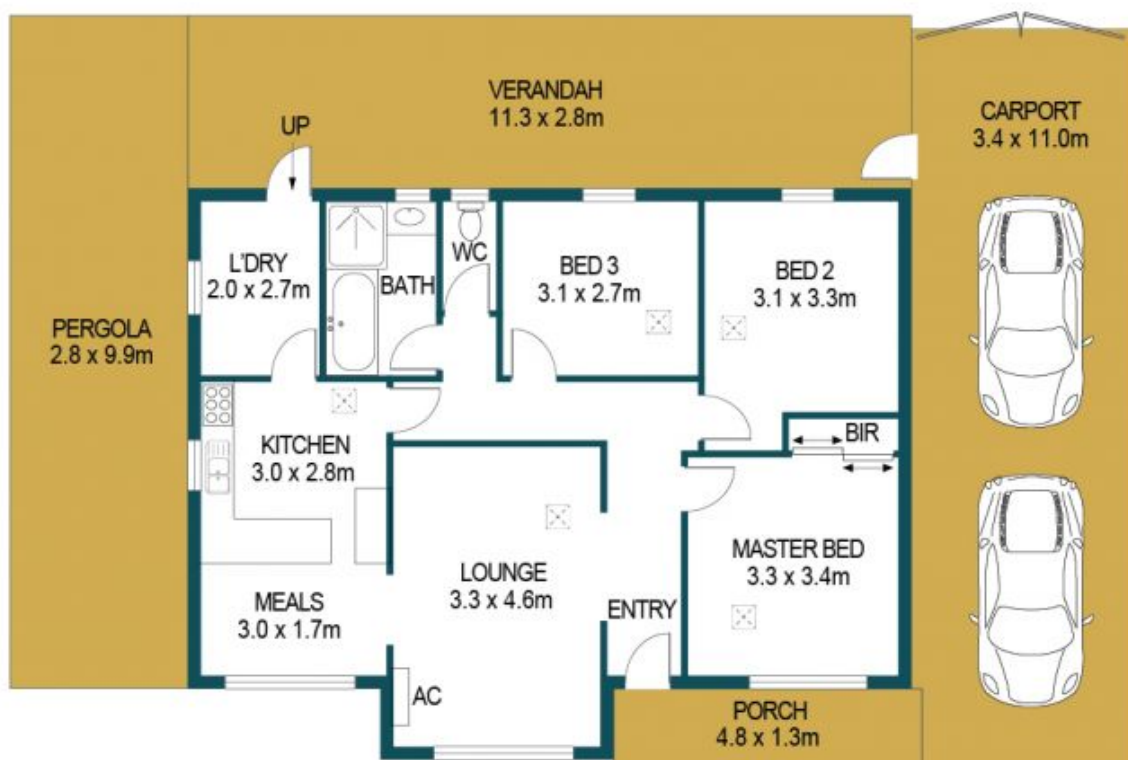
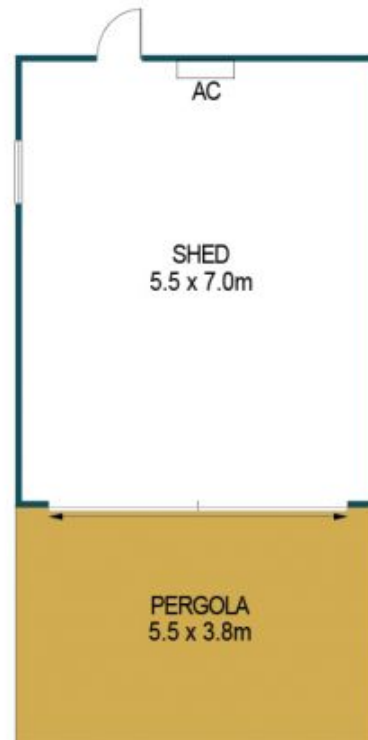
Mike Lao, Tyson Bennett and Edge Realty RLA256385 are proud to present to the market this classic and charming home promising family-friendly comfort. Buyers looking for an opportunity to move in and make their own updates will be drawn to the potential of this impressive property while astute investors will appreciate the low-maintenance appeal, the solid-brick construction and good-size 760sqm lot.



**Mike Lao**  
0410390250



**Tyson Bennett**  
0437161997



APPROXIMATE DIMENSIONS	
LIVING:	92.2m <sup>2</sup>
CARPORT:	37.4m <sup>2</sup>
SHED/PORCH:	44.7m <sup>2</sup>
PERGOLA:	48.6m <sup>2</sup>
VERANDAH:	31.6m <sup>2</sup>
TOTAL:	254.5m <sup>2</sup>

## 30 MANTISSA ROAD, SALISBURY NORTH

### DISCLAIMER

PLANS SHOWN ARE FOR MARKETING PURPOSES ONLY. ALL DIMENSIONS ARE APPROXIMATE AND NOT TO SCALE. THEY ARE SUBJECT TO ERRORS AND INACCURACIES AND NO LIABILITY WILL BE ACCEPTED. INTERESTED PARTIES SHOULD MAKE THEIR OWN ENQUIRIES.



IMAGES AND FLOORPLAN BY:  
**IN-HOUSE**  
IMAGING  
[inhouseimaging.com.au](http://inhouseimaging.com.au)