



2 Westbury Court CRAIGMORE SA

4  2  2 

To submit an offer, please copy and paste this link into your browser: <https://airtable.com/shrBb12PXtTjyZAXm>

Mike Lao, Brendon Ly and Edge Realty RLA256385 are proud to present to the market this large 4-bedroom, 2-bathroom, 2-car family home with a perfect location in a quiet street in Craigmore. The property is currently tenanted with a periodic lease returning \$400 per week.

Inside this well maintained home you'll find easy care floating floors underfoot in the living areas, ducted air-conditioning and heating throughout, and large carpeted bedrooms.

The main bedroom features a pretty, bay window with a view over the front gardens, with a walk-in robe and tiled ensuite, great for privacy and convenience. All three guest

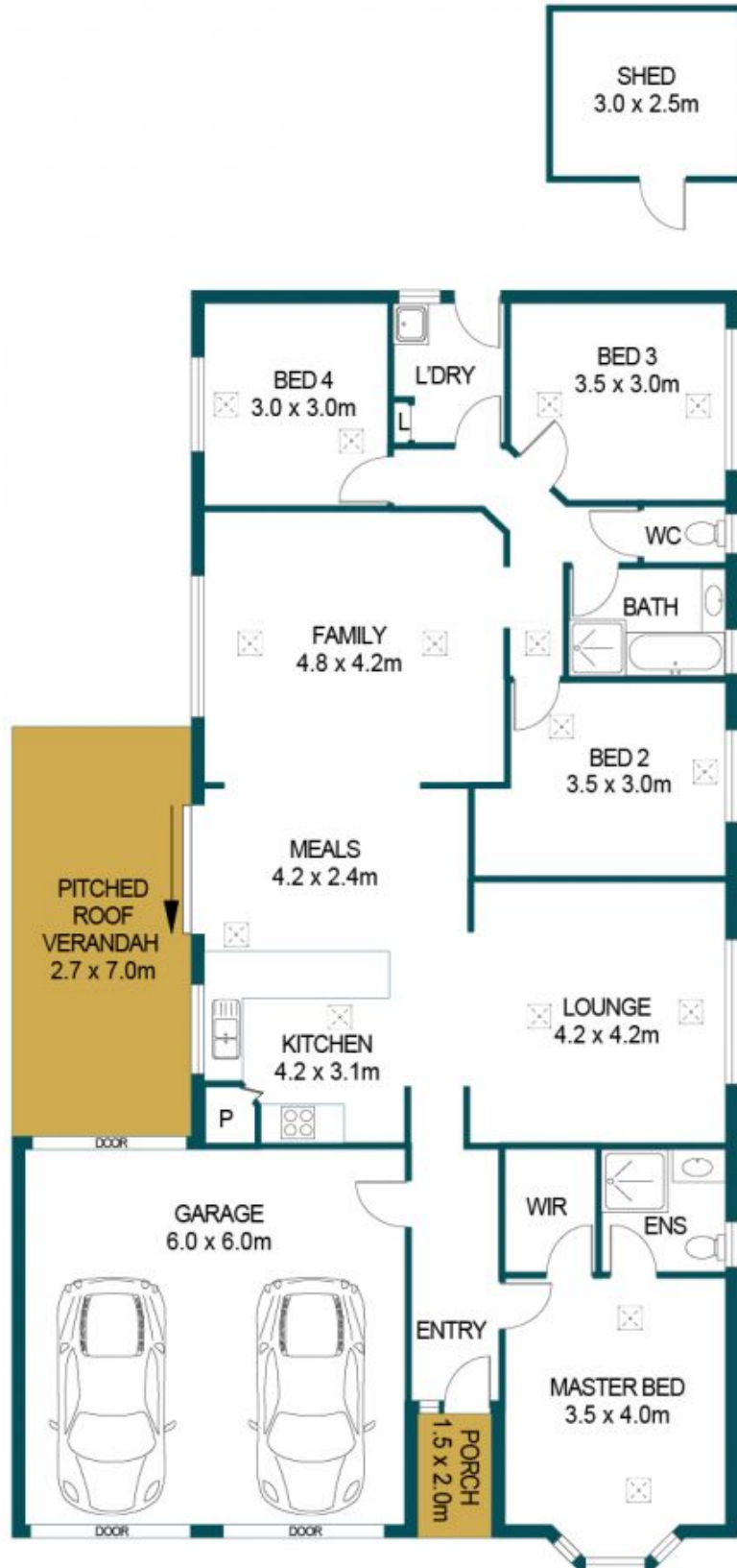
Price : \$ 445,000
Building Size : 139 sqm
Land Size : 375 sqm
View : <https://www.edgerealty.com.au/sale/sa/north-north-east-suburbs/craigmore/residential/house/6953997>



Mike Lao
0410390250



Brendon Ly
0447888444



APPROXIMATE DIMENSIONS

LIVING:	139.2m ²
GARAGE:	36.0m ²
VERANDAH:	18.9m ²
PORCH:	3.0m ²
TOTAL:	197.1m ²

2 WESTBURY COURT, CRAIGMORE

DISCLAIMER

PLANS SHOWN ARE FOR MARKETING PURPOSES ONLY. ALL DIMENSIONS ARE APPROXIMATE AND NOT TO SCALE. THEY ARE SUBJECT TO ERRORS AND INACCURACIES AND NO LIABILITY WILL BE ACCEPTED. INTERESTED PARTIES SHOULD MAKE THEIR OWN ENQUIRIES.



IMAGES AND FLOORPLAN BY:
IN-HOUSE
IMAGING
inhouseimaging.com.au