



4 Kulbina Drive SALISBURY NORTH SA

3 1 3

For an in-depth look at this home, please click on the 3D tour for a virtual walk-through or copy and paste this link into your browser

Virtual Tour Link:
<https://my.matterport.com/show/?m=MFhZ1fMSUZk>

To submit an offer, please copy and paste this link into your browser: <https://airtable.com/shrBb12PXtTjyZAXm>

Mike Lao, Tyson Bennett and Edge Realty RLA256385 are proud to present to the market this bright, comfortable and family-friendly Salisbury North abode. Whether you're new to the world of property or you're an experienced house-hunter, this is a quality home that will impress with a long list of must-have features throughout.

From the entry, the single-storey layout unfolds to reveal a

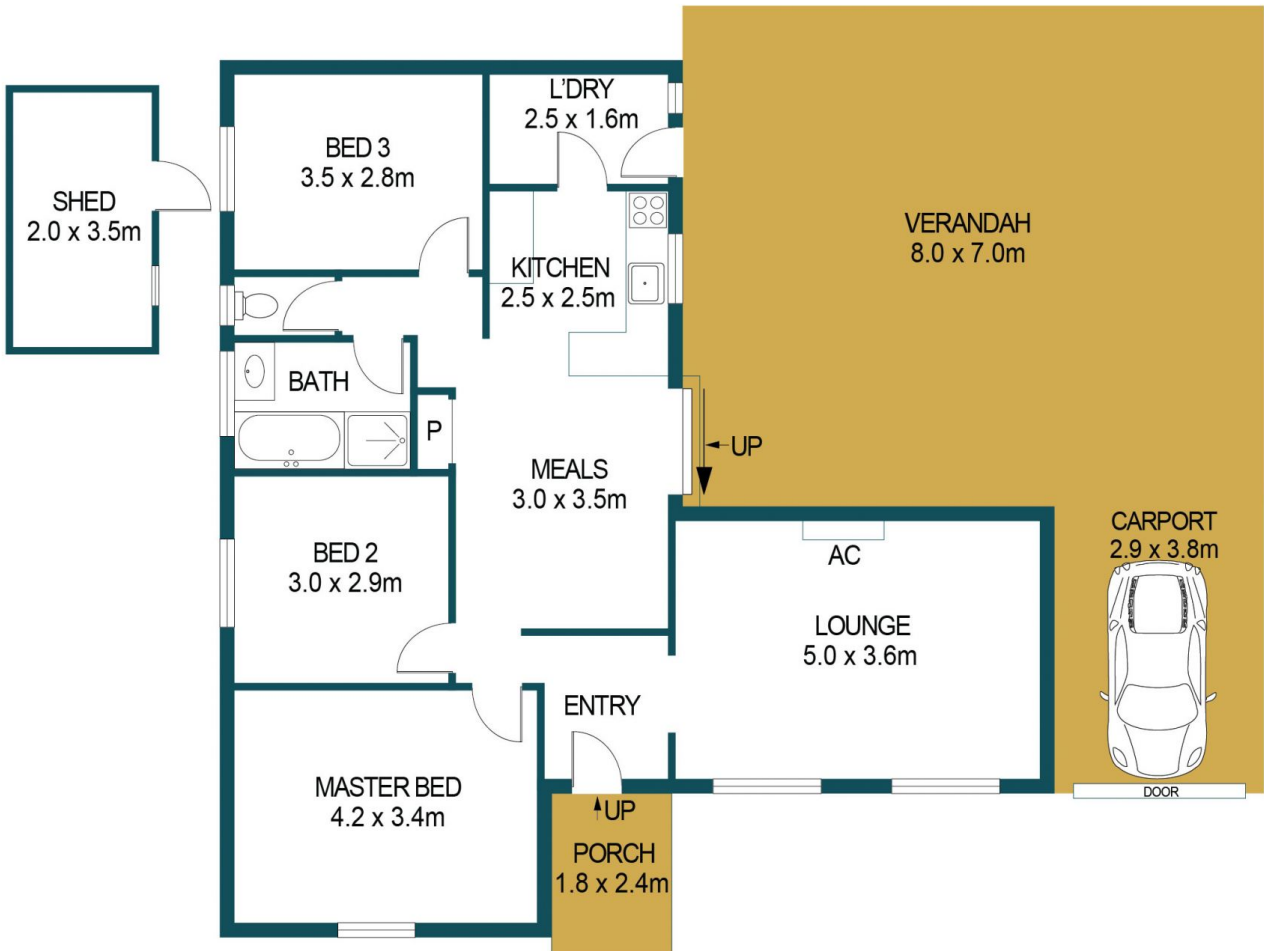
Price : \$ 420,000
Building Size : 96 sqm
Land Size : 550 sqm
View : <https://www.edgerealty.com.au/sale/sa/north-north-east-suburbs/salisbury-north/residential/house/6982439>



Mike Lao
0410390250



Tyson Bennett
0437161997



APPROXIMATE DIMENSIONS

LIVING:	96.8m ²
CARPOR:	11.0m ²
SHED:	7.0m ²
PORCH:	4.3m ²
VERANDAH:	56.0m ²
TOTAL:	175.1m ²

4 KULBINA DRIVE, SALISBURY NORTH

DISCLAIMER

PLANS SHOWN ARE FOR MARKETING PURPOSES ONLY, ALL DIMENSIONS ARE APPROXIMATE AND NOT TO SCALE. THEY ARE SUBJECT TO ERRORS AND INACCURACIES AND NO LIABILITY WILL BE ACCEPTED. INTERESTED PARTIES SHOULD MAKE THEIR OWN ENQUIRIES.



IMAGES AND FLOORPLAN BY:
IN-HOUSE
IMAGING
inhouseimaging.com.au