



### 30 Grenadier Road ELIZABETH EAST SA

4  1  5 

\*For an in-depth look at this home, please click on the 3D tour for a virtual walk-through\*

Virtual Tour Link:  
<https://my.matterport.com/show/?m=xuRpRZKakc4>

To submit an offer, please copy and paste this link into your browser: <https://airtable.com/shrBb12PXtTjyZAXm>

Tyson Bennett, Mike Lao and Edge Realty RLA256385 are proud to present to the market an enviable home offering space, comfort and convenience. This Elizabeth East abode will appeal to everyone from first-time buyers to growing families and investors on the hunt for a quality property within this sought-after location.

The single-storey layout has been cleverly designed for easy-care living with four bedrooms and enjoying easy

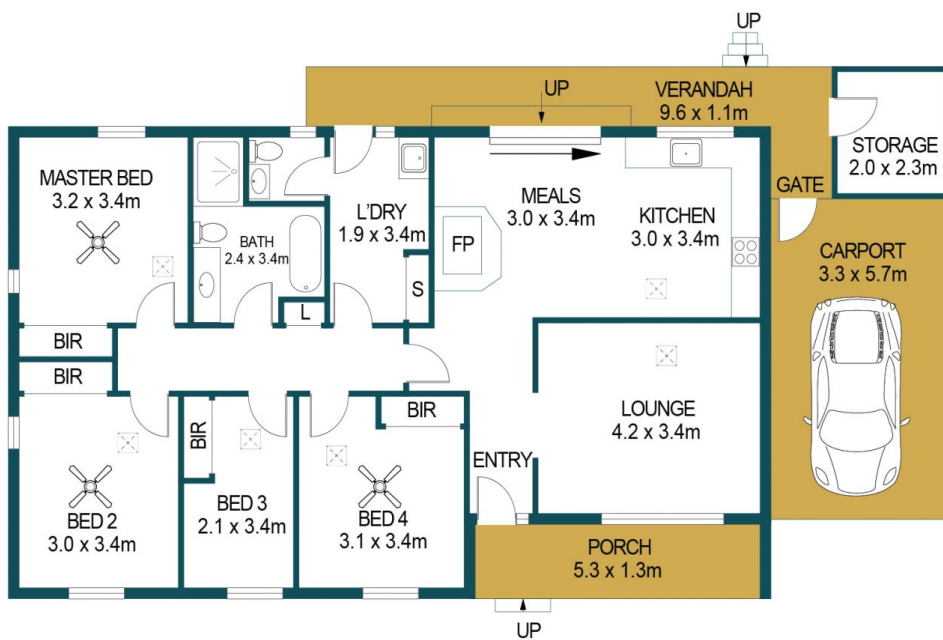
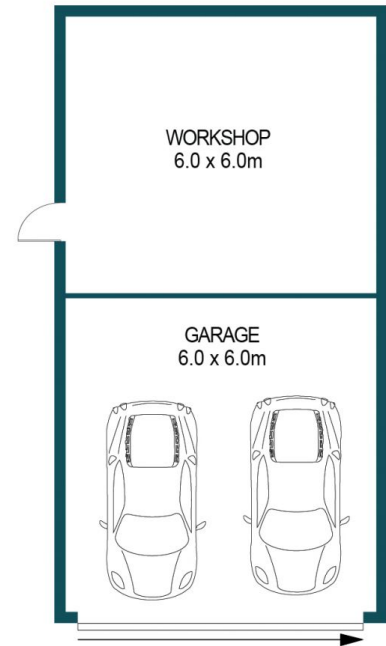
**Price** : \$ 435,000  
**Building Size** : 112 sqm  
**Land Size** : 900 sqm  
**View** : <https://www.edgerealty.com.au/sale/sa/north-north-east-suburbs/elizabeth-east/residential/house/7005259>



**Tyson Bennett**  
 0437161997



**Mike Lao**  
 0410390250



## 30 GRENADIER ROAD, ELIZABETH EAST

| APPROXIMATE DIMENSIONS |                     |
|------------------------|---------------------|
| LIVING:                | 112.5m <sup>2</sup> |
| GARAGE:                | 72.0m <sup>2</sup>  |
| STORAGE:               | 4.6m <sup>2</sup>   |
| PORCH/CARPORT:         | 25.7m <sup>2</sup>  |
| VERANDAH:              | 10.6m <sup>2</sup>  |
| TOTAL:                 | 225.4m <sup>2</sup> |

### DISCLAIMER

PLANS SHOWN ARE FOR MARKETING PURPOSES ONLY. ALL DIMENSIONS ARE APPROXIMATE AND NOT TO SCALE. THEY ARE SUBJECT TO ERRORS AND INACCURACIES AND NO LIABILITY WILL BE ACCEPTED. INTERESTED PARTIES SHOULD MAKE THEIR OWN ENQUIRIES.



IMAGES AND FLOORPLAN BY:  
**IN-HOUSE**  
IMAGING  
[inhouseimaging.com.au](http://inhouseimaging.com.au)