

## 51 Elmgrove Road SALISBURY NORTH SA

4 2 2

\*For an in-depth look at this home, please click on the 3D tour for a virtual walk-through or copy and paste this link into your browser\*

Virtual <https://my.matterport.com/show/?m=YehDgC2e9SK> Tour Link:

To submit an offer, please copy and paste this link into your browser: <https://airtable.com/shrBb12PXtTjyZAXm>

Mike Lao, Tyson Bennett and Edge Realty RLA256385 are proud to present to the market this Salisbury North beauty that proves the ideal family home really does exist. Set on a good-size lot and spanning over two levels, this is a spacious and stylish home that's sure to tick all the boxes for a wide range of astute house-hunters.

Every inch of this stunning abode exudes elegance, style

**Building Size** : 239 sqm  
**Land Size** : 407 sqm  
**View** : <https://www.edgerealty.com.au/sale/sa/north-north-east-suburbs/salisbury-north/residential/house/7031235>



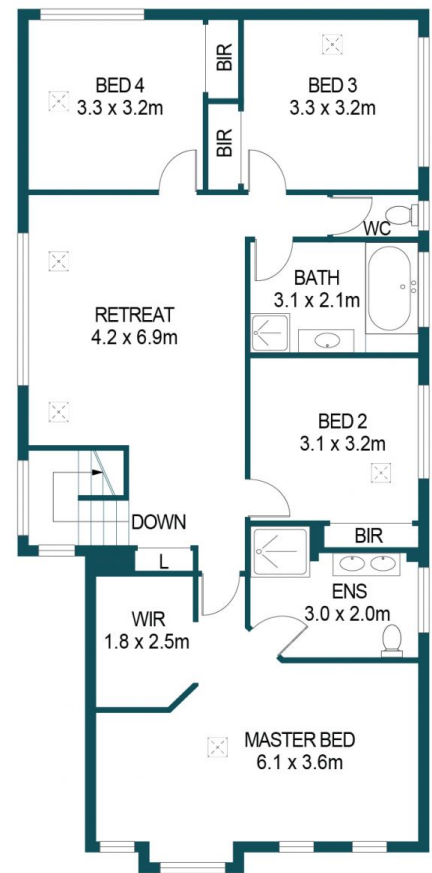
**Mike Lao**  
0410390250



**Tyson Bennett**  
0437161997



GROUND FLOOR



FIRST FLOOR

APPROXIMATE DIMENSIONS

LIVING:	239.5m <sup>2</sup>
GARAGE:	30.3m <sup>2</sup>
WORKSHOP:	15.0m <sup>2</sup>
PORCH:	3.4m <sup>2</sup>
VERANDAH:	78.5m <sup>2</sup>
TOTAL:	366.7m <sup>2</sup>

## 51 ELMGROVE ROAD, SALISBURY NORTH

DISCLAIMER

PLANS SHOWN ARE FOR MARKETING PURPOSES ONLY. ALL DIMENSIONS ARE APPROXIMATE AND NOT TO SCALE. THEY ARE SUBJECT TO ERRORS AND INACCURACIES AND NO LIABILITY WILL BE ACCEPTED. INTERESTED PARTIES SHOULD MAKE THEIR OWN ENQUIRIES.



IMAGES AND FLOORPLAN BY:  
**IN-HOUSE**  
IMAGING  
inhouseimaging.com.au