



**9/40 Hume Street SALISBURY NORTH SA**

3  1  2 

\*For an in-depth look at this home, please click on the 3D tour for a virtual walk-through or copy and paste this link into your browser\*

Virtual Tour Link:  
<https://vtc.virtualtourscreator.com.au/share/896d1a2180581fcab98a523e2032ff62>

**Price** : \$ 315,000  
**Building Size** : 110 sqm  
**Land Size** : 146 sqm  
**View** : <https://www.edgerealty.com.au/sale/sa/north-north-east-suburbs/salisbury-north/residential/townhouse/7040599>

To submit an offer, please copy and paste this link into your browser: <https://airtable.com/shrBb12PXtTjyZAXm>

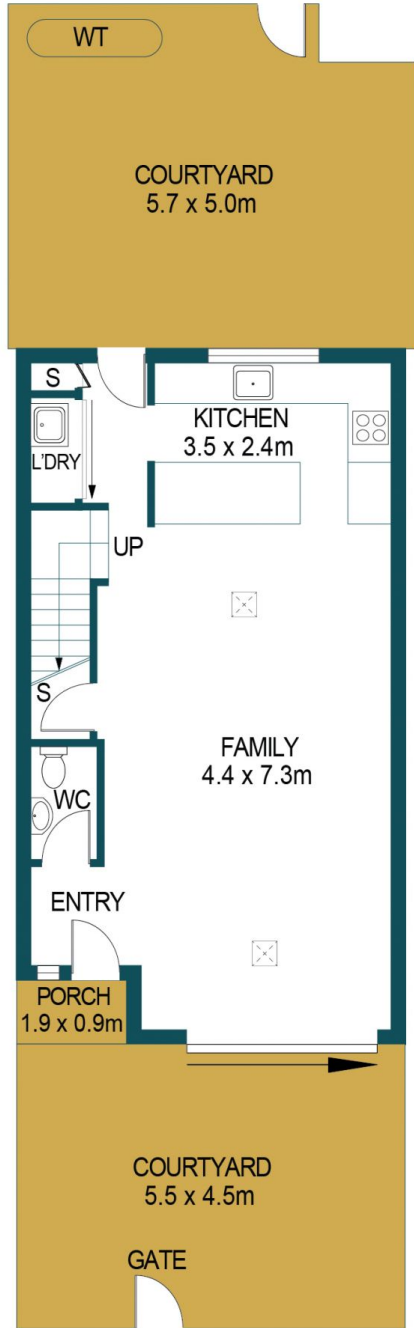
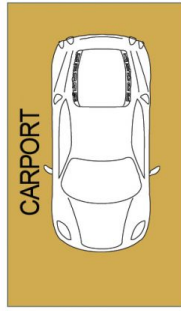
Mike Lao, Brendon Ly and Edge Realty RLA256385 are proud to present to the market this beautiful abode nestled within a contemporary community. Sleek and stylish yet low-maintenance, this is an ideal home for anyone wanting easy-care living. Downsizers will love the location while young families seeking a haven will enjoy space and comfort without compromising on style and luxury. The



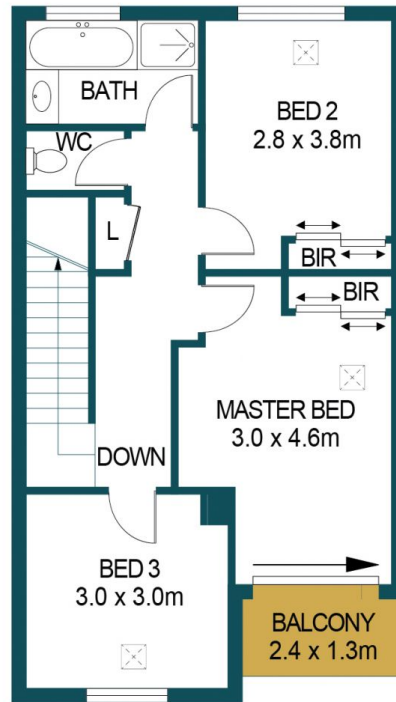
**Mike Lao**  
0410390250



**Brendon Ly**  
0447888444



GROUND FLOOR



FIRST FLOOR

APPROXIMATE DIMENSIONS

|            |                     |
|------------|---------------------|
| LIVING:    | 110.5m <sup>2</sup> |
| COURTYARD: | 51.7m <sup>2</sup>  |
| BALCONY:   | 3.1m <sup>2</sup>   |
| PORCH:     | 1.7m <sup>2</sup>   |
| TOTAL:     | 167.0m <sup>2</sup> |

## 9/40 HUME STREET, SALISBURY NORTH

### DISCLAIMER

PLANS SHOWN ARE FOR MARKETING PURPOSES ONLY. ALL DIMENSIONS ARE APPROXIMATE AND NOT TO SCALE. THEY ARE SUBJECT TO ERRORS AND INACCURACIES AND NO LIABILITY WILL BE ACCEPTED. INTERESTED PARTIES SHOULD MAKE THEIR OWN ENQUIRIES.



IMAGES AND FLOORPLAN BY:  
**IN-HOUSE**  
IMAGING  
inhouseimaging.com.au