



12 Tamdhu Court GREENWITH SA

2 1 1

For an in-depth look at this home, please click on the 3D tour for a virtual walk-through or copy and paste this link into your browser

Virtual Tour Link:
<https://vtc.virtualtourscreator.com.au/share/a7919e49e32a-beb3820a0c9ce3bc2983>

To submit an offer, please copy and paste this link into your browser: <https://airtable.com/shrBb12PXtTjyZAXm>

Mike Lao, Brendon Ly and Edge Realty RLA256385 are proud to present to the market this easy-care abode promising the life of leisure you deserve. You will fall head over heels for this quiet cul-de-sac setting, directly across from a pretty park, while the home's functional design and low-maintenance appeal ensure it will attract a wide variety of house-hunters. From first-time buyers to downsizers and

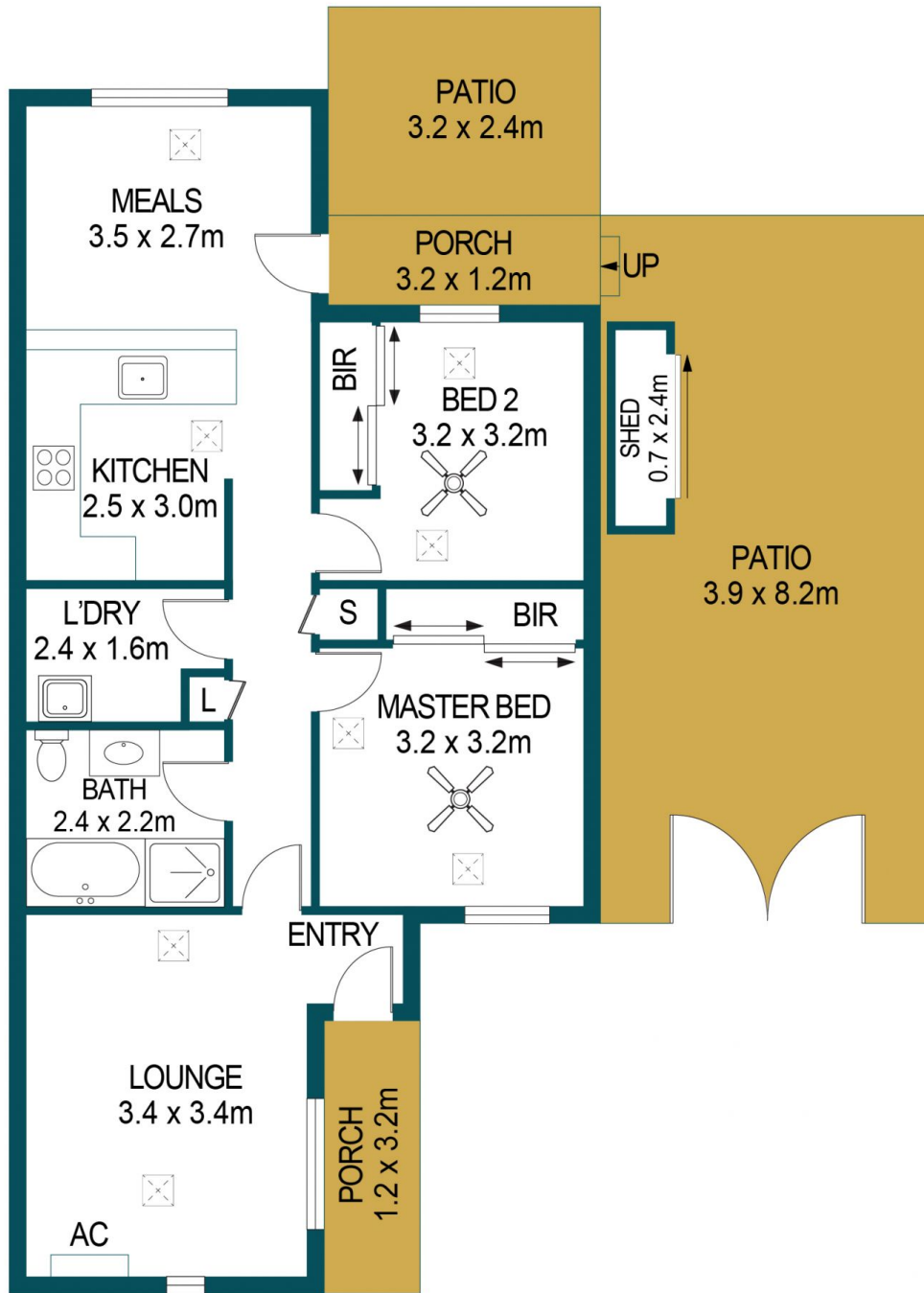
Price : \$ 379,000
Building Size : 77 sqm
Land Size : 372 sqm
View : <https://www.edgerealty.com.au/sale/sa/north-north-east-suburbs/greenwith/residential/house/7073044>



Mike Lao
0410390250



Brendon Ly
0447888444



12 TAMDHU COURT, GREENWITH

APPROXIMATE DIMENSIONS	
LIVING:	77.5m ²
PORCH:	7.2m ²
PATIO:	38.8m ²
TOTAL:	123.5m ²

DISCLAIMER

PLANS SHOWN ARE FOR MARKETING PURPOSES ONLY, ALL DIMENSIONS ARE APPROXIMATE AND NOT TO SCALE. THEY ARE SUBJECT TO ERRORS AND INACCURACIES AND NO LIABILITY WILL BE ACCEPTED. INTERESTED PARTIES SHOULD MAKE THEIR OWN ENQUIRIES.



IMAGES AND FLOORPLAN BY:
IN-HOUSE
IMAGING
inhouseimaging.com.au