



## 19 Beach Road ST KILDA SA

3 1 12

\*For an in-depth look at this home, please click on the 3D tour for a virtual walk-through or copy and paste this link into your browser\*

Virtual <https://my.matterport.com/show/?m=6k6xhiZAQf1> Tour Link:

To submit an offer, please copy and paste this link into your browser:  
<https://www.edgerealty.com.au/buying/make-an-offer/>

Mike Lao, Brendon Ly and Edge Realty RLA256385 are proud to present to the market a light-filled home that offers an outstanding combination of low-maintenance living and a coastal family lifestyle. This effortless floor plan is naturally lit with three good-sized bedrooms and an open-plan kitchen, meals and family area that connects seamlessly to the backyard.

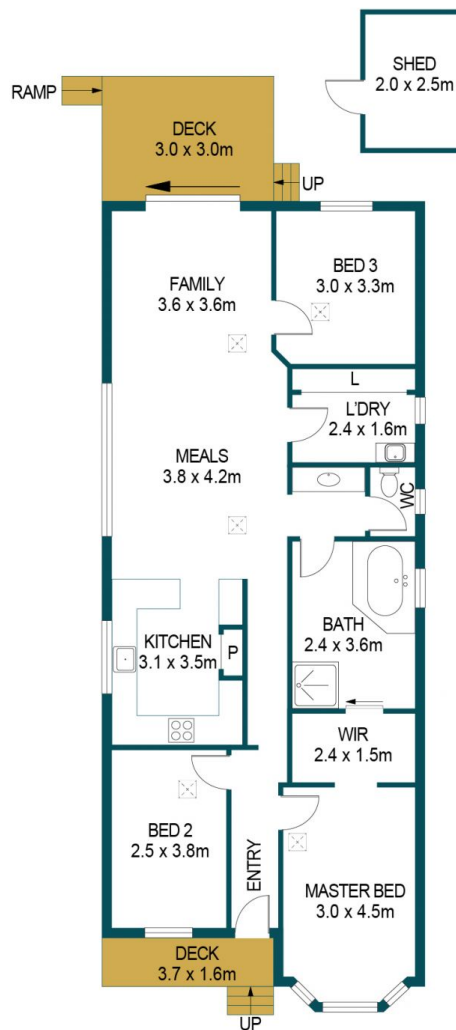
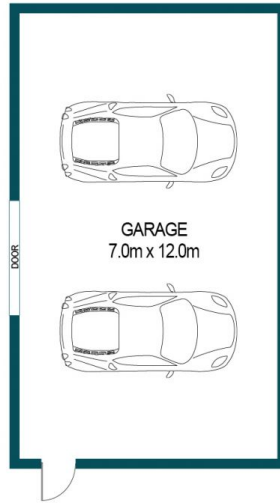
**Price** : \$ 440,000  
**Building Size** : 107 sqm  
**Land Size** : 711 sqm  
**View** : <https://www.edgerealty.com.au/sale/sa/north-north-east-suburbs/st-kilda/residential/house/7075022>



**Mike Lao**  
0410390250



**Brendon Ly**  
0447888444



APPROXIMATE DIMENSIONS	
LIVING:	104.7m <sup>2</sup>
DECK:	14.9m <sup>2</sup>
SHED:	5.0m <sup>2</sup>
GARAGE:	84.0m <sup>2</sup>
TOTAL:	208.6m <sup>2</sup>

## 19 BEACH ROAD, ST KILDA

### DISCLAIMER

PLANS SHOWN ARE FOR MARKETING PURPOSES ONLY, ALL DIMENSIONS ARE APPROXIMATE AND NOT TO SCALE. THEY ARE SUBJECT TO ERRORS AND INACCURACIES AND NO LIABILITY WILL BE ACCEPTED. INTERESTED PARTIES SHOULD MAKE THEIR OWN ENQUIRIES.



IMAGES AND FLOORPLAN BY:  
**IN-HOUSE**  
IMAGING  
inhouseimaging.com.au