



## 33 Strathaird Boulevard SMITHFIELD SA

3 2 1

\*For an in-depth look at this home, please click on the 3D tour for a virtual walk-through or copy and paste this link into your browser\*

Virtual Tour Link:  
<https://vtc.virtualtourscreator.com.au/share/70793126817f430d2b1d6a5cb2d2ef25>

To submit an offer, please copy and paste this link into your browser: <https://airtable.com/shrBb12PXtTjyZAXm>

Mike Lao, Brendon Ly and Edge Realty RLA256385 are proud to present to the market this bright and modern abode you'll be proud to call your own. The layout is open and stylish, crafted for the family looking for an easy-care lifestyle without compromising on space and comfort. The property is currently tenanted with a periodic tenancy of \$330 per week.

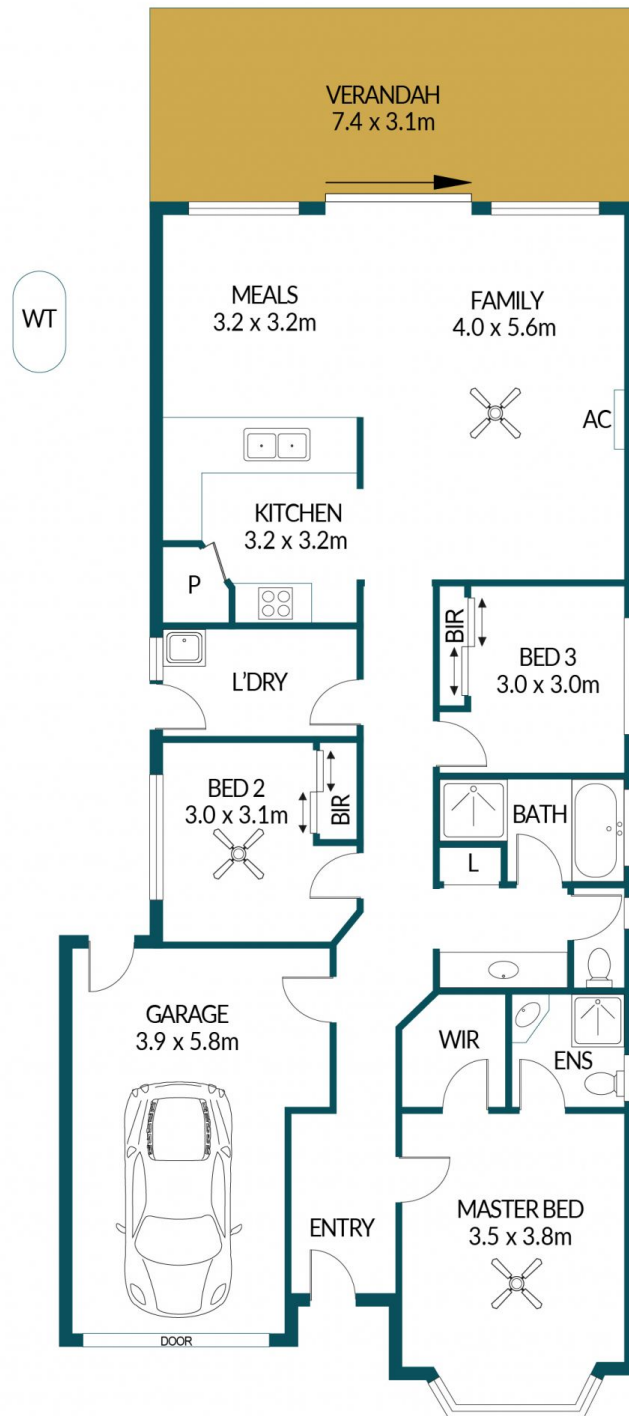
**Price** : \$ 370,000  
**Building Size** : 121 sqm  
**Land Size** : 300 sqm  
**View** : <https://www.edgerealty.com.au/sale/sa/north-north-east-suburbs/smithfield/residential/house/7105869>



**Mike Lao**  
0410390250



**Brendon Ly**  
0447888444



## 33 STRATHAIRD BOULEVARD, SMITHFIELD

### Disclaimer

Plans shown are for marketing purposes only. All dimensions are approximate and not to scale. They are subject to errors and inaccuracies and no liability will be accepted. Interested parties should make their own enquiries. Inclusions and exclusions must be confirmed in the Residential Contract.

### APPROXIMATE DIMENSIONS

LIVING:	121.5m <sup>2</sup>
GARAGE:	23.5m <sup>2</sup>
VERANDAH:	22.9m <sup>2</sup>
TOTAL:	167.9m <sup>2</sup>