



7 Carman Close HILLBANK SA

4  2  2 

To submit an offer, please copy and paste this link into your browser:

<https://www.edgerealty.com.au/buying/make-an-offer/>

Mike Lao, Tyson Bennett and Edge Realty RLA256385 are proud to present to the market this grand property with breath taking views combining the best of tranquil living next to nature and a potential entertaining oasis. An abundance of indoor-outdoor living and entertaining spaces are spread throughout the two-storey residence and designed to suit every mood and occasion whether you're gathering with loved ones, hosting guests or simply enjoy the peace and privacy of this wonderful location.

A grand two-storey entry welcomes you to step inside and discover an elegant double split stair case where you can head upstairs to the master bedroom wing or open-plan

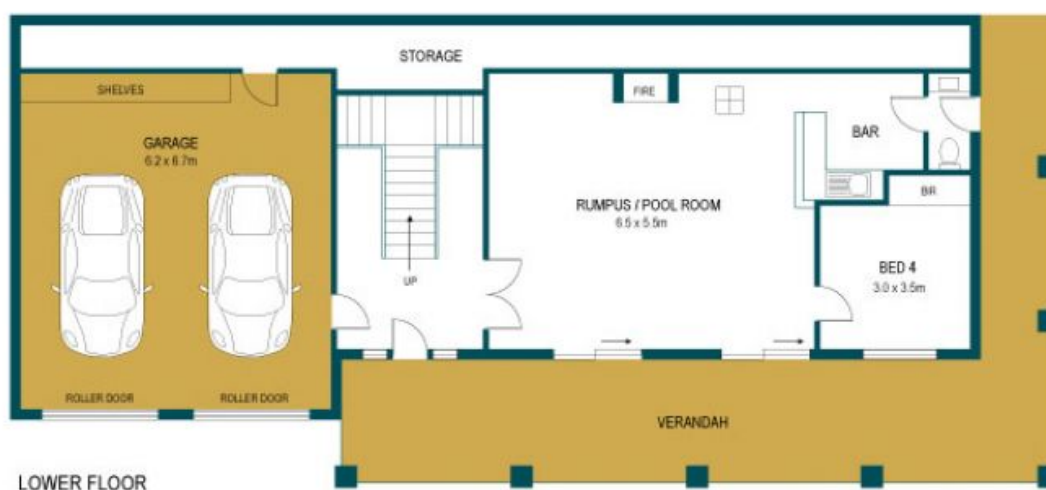
Price : \$ 750,000
Building Size : 402 sqm
Land Size : 1340 sqm
View : <https://www.edgerealty.com.au/sale/sa/north-north-east-suburbs/hillbank/residential/house/7117935>



Mike Lao
0410390250



Tyson Bennett
0437161997



7 CARMAN CLOSE, HILLBANK

Disclaimer

Plans shown are for marketing purposes only. All dimensions are approximate and not to scale. They are subject to errors and inaccuracies and no liability will be accepted. Interested parties should make their own enquiries. Inclusions and exclusions must be confirmed in the Residential Contract.

APPROXIMATE DIMENSIONS

LIVING:	264.8 m ²
GARAGE:	44.4 m ²
BALCONY/VERANDAH:	92.8 m ²
TOTAL:	402.0 m ²