



33 Lonsdale Crescent ANDREWS FARM SA

3  2  1 

For an in-depth look at this home, please click on the 3D tour for a virtual walk-through or copy and paste this link into your browser

Virtual Tour Link:
<https://vtc.virtualtourscreator.com.au/share/5e0fd55dd9c86e004d8139705b1b1256>

To submit an offer, please copy and paste this link into your browser: <https://airtable.com/shrBb12PXtTjyZAXm>

Mike Lao, Tyson Bennett and Edge Realty RLA256385 are proud to present to the market this charming adobe ready for families seeking easy-care living. A quaint, red-brick facade has been paired with a manicured low-maintenance yard providing a warm welcome each and every day. The property is currently tenanted at \$275 per week until 08/08/2022.

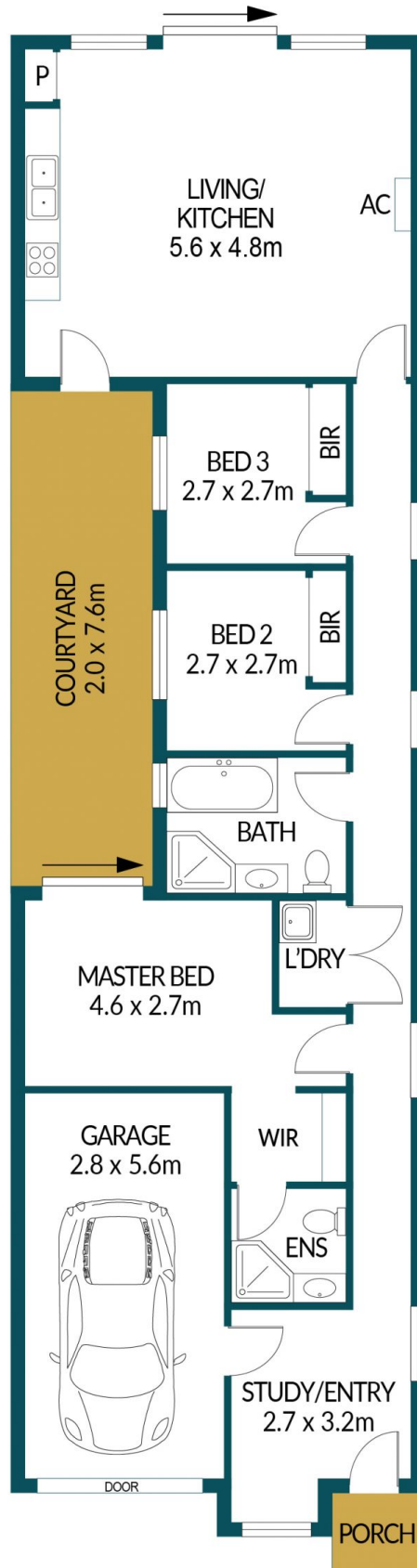
Price : \$ 328,000
Building Size : 104 sqm
Land Size : 210 sqm
View : <https://www.edgerealty.com.au/sale/sa/north-north-east-suburbs/andrews-farm/residential/house/7117981>



Mike Lao
0410390250



Tyson Bennett
0437161997



33 LONSDALE CRESCENT, ANDREWS FARM

Disclaimer

Plans shown are for marketing purposes only. All dimensions are approximate and not to scale. They are subject to errors and inaccuracies and no liability will be accepted. Interested parties should make their own enquiries. Inclusions and exclusions must be confirmed in the Residential Contract.

APPROXIMATE DIMENSIONS

| | |
|------------|---------------------|
| LIVING: | 72.1m ² |
| PORCH: | 1.5m ² |
| COURTYARD: | 55.2m ² |
| GARAGE: | 15.7m ² |
| TOTAL: | 144.5m ² |