



38 Greenwood Crescent SMITHFIELD PLAINS SA

3  1  2 

For an in-depth look at this home, please click on the 3D tour for a virtual walk-through or copy and paste this link into your browser

Virtual Tour Link:
<https://my.matterport.com/show/?m=TxZcCRbwfT4>

To submit an offer, please copy and paste this link into your browser: <https://airtable.com/shrBb12PXtTjyZAXm>

Mike Lao, Tyson Bennett and Edge Realty RLA256385 are proud to present to the market this three-bedroom, one bathroom home in the heart of Smithfield Plains with loads of appeal for the whole family. The large outdoor verandah is perfect for hosting gatherings with family and friends, while the backyard provides plenty of room to run around and play.

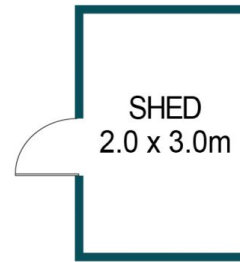
Price : \$ 351,551
Building Size : 103 sqm
Land Size : 640 sqm
View : <https://www.edgerealty.com.au/sale/sa/north-north-east-suburbs/smithfield-plains/residential/house/7119976>



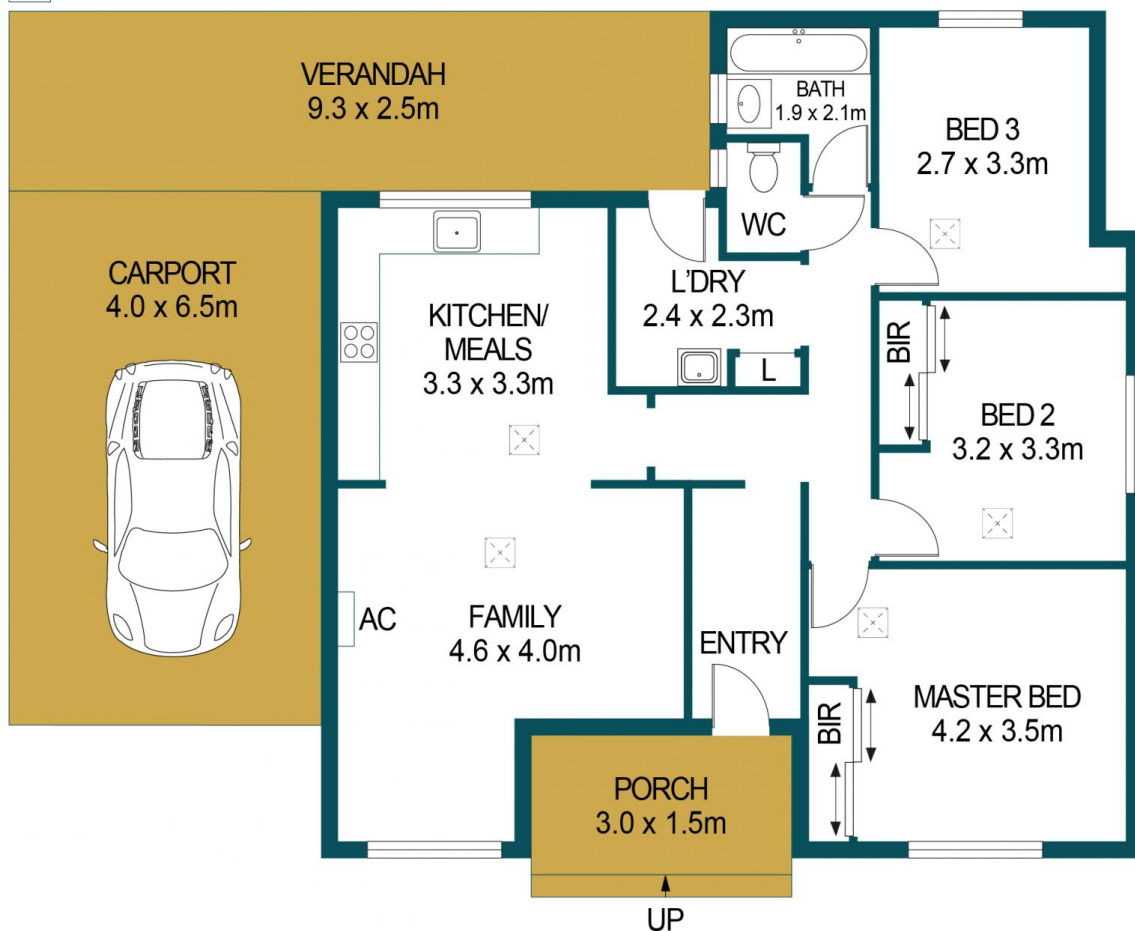
Mike Lao
0410390250



Tyson Bennett
0437161997



WT
WT



38 GREENWOOD CRESCENT, SMITHFIELD PLAINS

Disclaimer

Plans shown are for marketing purposes only. All dimensions are approximate and not to scale. They are subject to errors and inaccuracies and no liability will be accepted. Interested parties should make their own enquiries. Inclusions and exclusions must be confirmed in the Residential Contract.

APPROXIMATE DIMENSIONS

LIVING:	87.1m ²
SHED:	6.0m ²
PORCH/CARPORT:	30.5m ²
VERANDAH:	23.2m ²
TOTAL:	146.8m ²