



28 Rita Drive PARALOWIE SA

4 2 2

For an in-depth look at this home, please click on the 3D tour for a virtual walk-through or copy and paste this link into your browser

Virtual <https://my.matterport.com/show/?m=PsR2qN3r6Zv> Tour Link:

To submit an offer, please copy and paste this link into your browser: <https://airtable.com/shrBb12PXtTjyZAXm>

Mike Lao Tyson Bennett and Edge Realty RLA256385 are proud to present to the market this sleek and stylish Sterling Homes family haven. High-end finishes and premium inclusions are on show throughout this Paralowie property with not a single detail overlooked or expense spared in the creation of this stunning abode.

You can show off your culinary skills in the open-plan

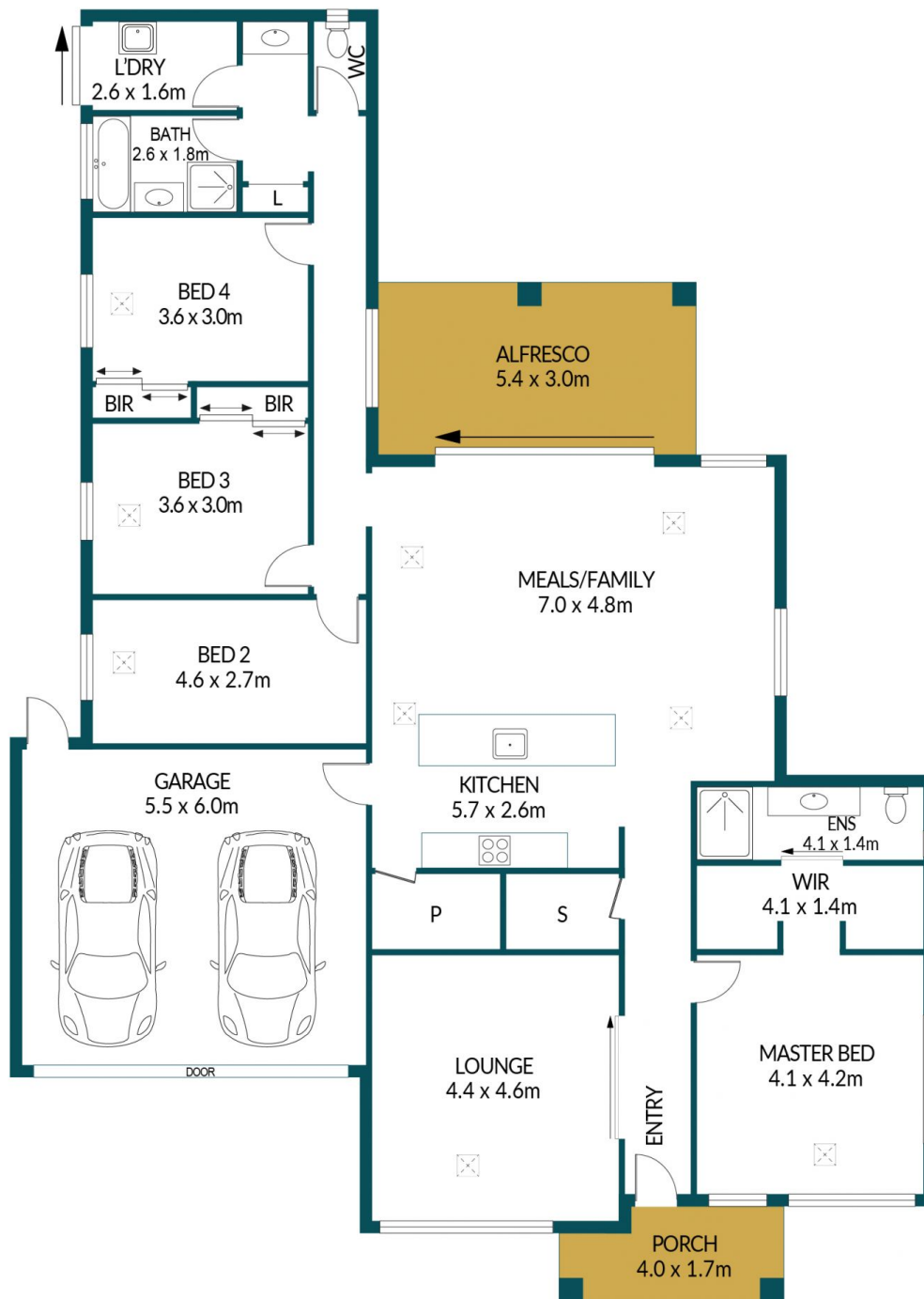
Price : \$ 676,000
Building Size : 194 sqm
Land Size : 443 sqm
View : <https://www.edgerealty.com.au/sale/sa/north-north-east-suburbs/paralowie/residential/house/7120006>



Mike Lao
0410390250



Tyson Bennett
0437161997



28 RITA DRIVE, PARALOWIE

Disclaimer

Plans shown are for marketing purposes only. All dimensions are approximate and not to scale. They are subject to errors and inaccuracies and no liability will be accepted. Interested parties should make their own enquiries. Inclusions and exclusions must be confirmed in the Residential Contract.

APPROXIMATE DIMENSIONS

LIVING:	194.25m ²
GARAGE:	36.76m ²
PORCH:	5.95m ²
ALFRESCO:	16.26m ²
TOTAL:	253.22m ²