



20 Underdown Road ELIZABETH SOUTH SA

3  1  1 

For an in-depth look at this home, please click on the 3D tour for a virtual walk-through or copy and paste this link into your browser

Virtual Tour Link:
<https://vtc.virtualltourscreator.com.au/share/3897d24023e6ef1ceb0a5255ec2db9d6>

To submit an offer, please copy and paste this link into your browser:

<https://www.edgerealty.com.au/buying/make-an-offer/>

Mike Lao, Tyson Bennett and Edge Realty RLA256385 are proud to present to the market this comfortable family home located less than 40 minutes from the Adelaide CBD. The functional floorplan promises easy-care living while young families and downsizers alike are sure to appreciate the three bedrooms, two-way bathroom and long list of

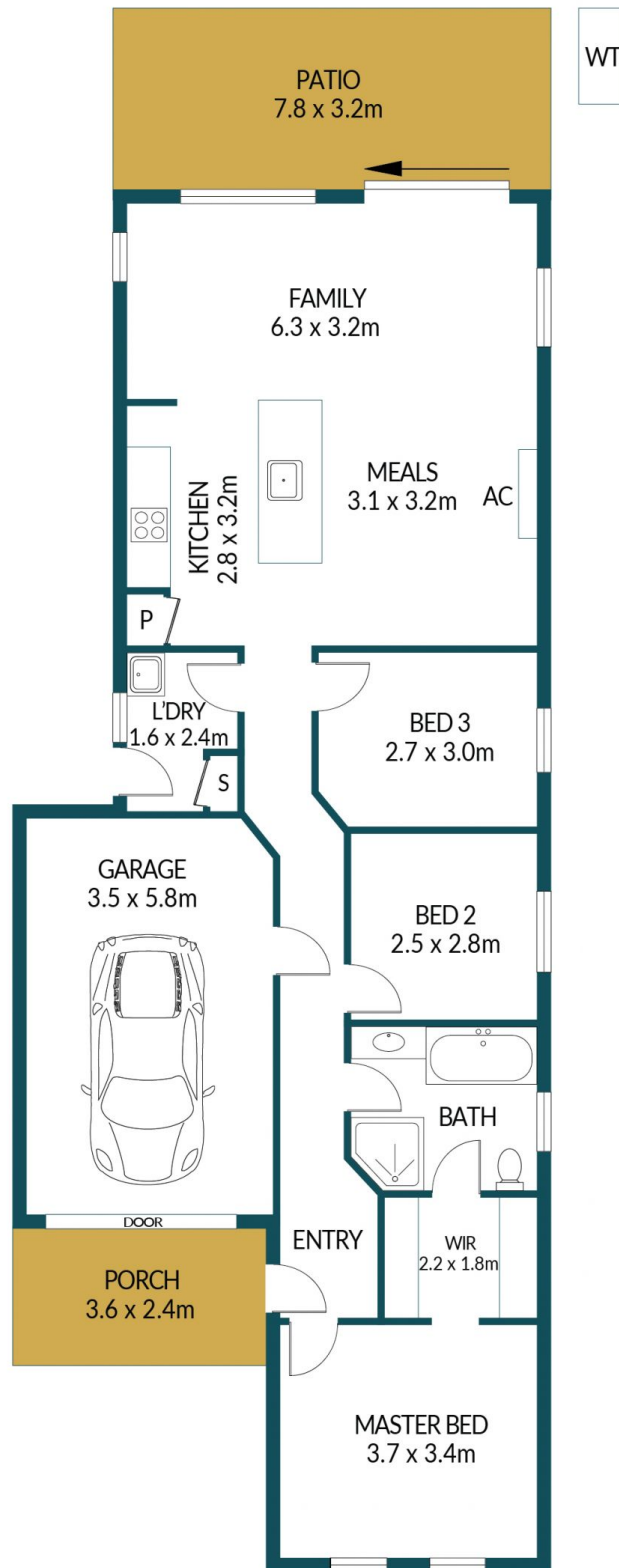
Price : \$ 360,000
Building Size : 157 sqm
Land Size : 390 sqm
View : <https://www.edgerealty.com.au/sale/sa/north-north-east-suburbs/elizabeth-south/residential/house/7151599>



Mike Lao
0410390250



Tyson Bennett
0437161997



20 UNDERDOWN ROAD, ELIZABETH SOUTH

Disclaimer

Plans shown are for marketing purposes only. All dimensions are approximate and not to scale. They are subject to errors and inaccuracies and no liability will be accepted. Interested parties should make their own enquiries. Inclusions and exclusions must be confirmed in the Residential Contract.

APPROXIMATE DIMENSIONS

LIVING:	103.2m ²
GARAGE:	20.3m ²
PORCH:	8.6m ²
PATIO:	25.0m ²
TOTAL:	157.1m ²