



20/9 Bald Street SMITHFIELD PLAINS SA

3 1 2

For an in-depth look at this home, please click on the 3D tour for a virtual walk-through or copy and paste this link into your browser

Virtual Tour Link:
<https://vtc.virtualtourscreator.com.au/share/cec40776293239a2f382c913d87c2a95>

Price : \$ 270,000
Building Size : 136 sqm
Land Size : 135 sqm
View : <https://www.edgerealty.com.au/sale/sa/north-north-east-suburbs/smithfield-plains/residential/townhouse/7152695>

To submit an offer, please copy and paste this link into your browser:
<https://www.edgerealty.com.au/buying/make-an-offer/>

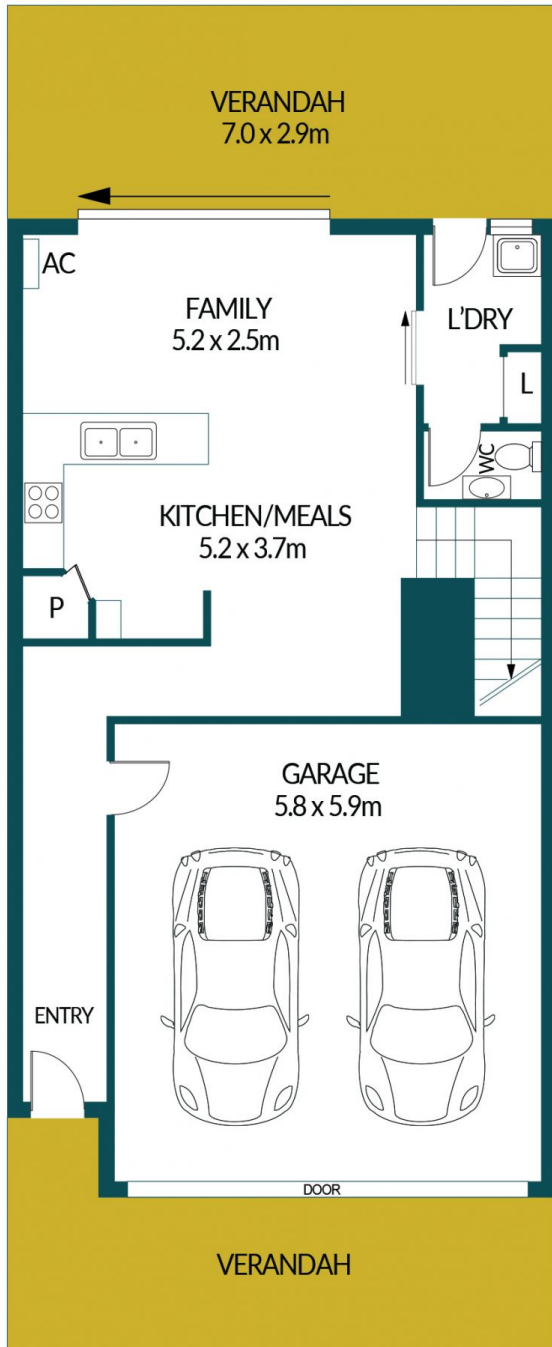
Mike Lao, Brendon Ly and Edge Realty RLA256385 are proud to present to the market this beautiful abode nestled within a contemporary community. Sleek and stylish yet low-maintenance, this is an ideal home for anyone wanting easy-care living. This rendered two-storey townhouse is perfect for first-time buyers, downsizers and investors alike



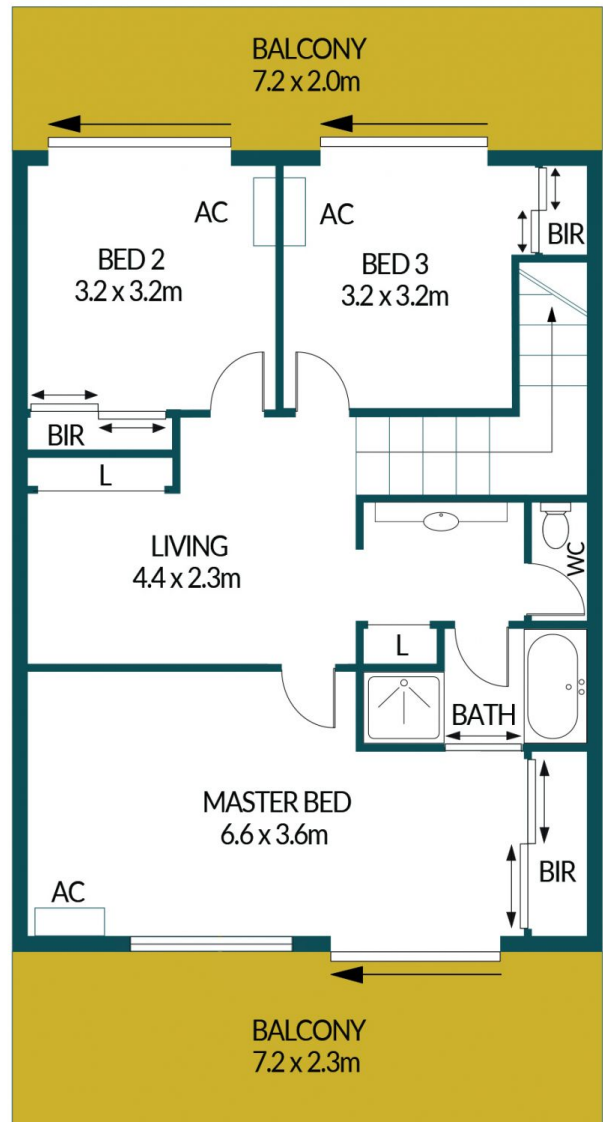
Mike Lao
0410390250



Brendon Ly
0447888444



GROUND FLOOR



UPPER FLOOR

20/9 BALD STREET, SMITHFIELD PLAINS

Disclaimer

Plans shown are for marketing purposes only. All dimensions are approximate and not to scale. They are subject to errors and inaccuracies and no liability will be accepted. Interested parties should make their own enquiries. Inclusions and exclusions must be confirmed in the Residential Contract.

APPROXIMATE DIMENSIONS

LIVING:	136.5m ²
GARAGE:	34.2m ²
VERANDAH:	36.3m ²
BALCONY:	30.4m ²
TOTAL:	237.4m ²