

## 27 Condon Drive LIGHTSVIEW SA

3  2  2 

\*For an in-depth look at this home, please click on the 3D tour for a virtual walk-through or copy and paste this link into your browser\*

Virtual Tour Link:  
<https://vtc.virtualltourscreator.com.au/share/8d4fcb501797ad8e2858d81cd5555d4c>

To submit an offer, please copy and paste this link into your browser:

<https://www.edgerealty.com.au/buying/make-an-offer/>

Mike Lao, Brendon Ly and Edge Realty RLA256385 are proud to present to the market this stylish, spacious and centrally located townhouse in Lightview. Set across two levels, this home features modern finishes and fixtures throughout as well as plenty of soft natural light. The property is currently tenanted with a Periodic lease of \$450

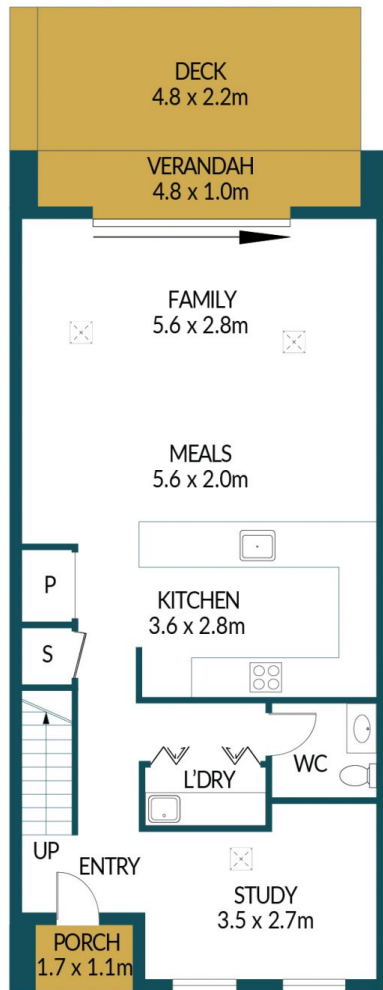
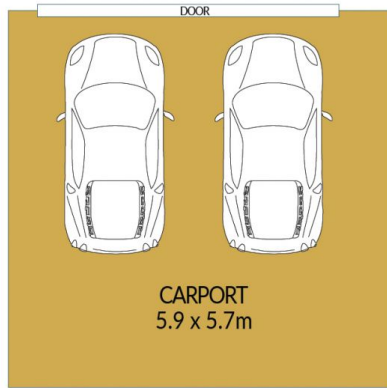
**Price** : \$ 580,000  
**Building Size** : 212 sqm  
**Land Size** : 165 sqm  
**View** : <https://www.edgerealty.com.au/sale/sa/north-north-east-suburbs/lightview/residential/house/7159339>



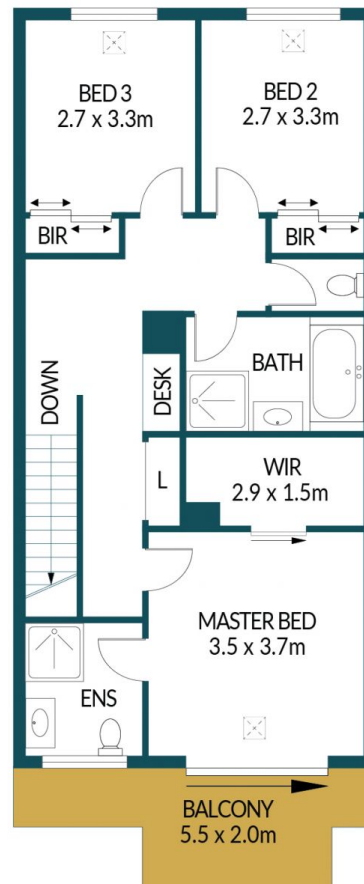
**Mike Lao**  
0410390250



**Brendon Ly**  
0447888444



GROUND FLOOR



FIRST FLOOR

## 27 CONDON DRIVE, LIGHTSVIEW

### Disclaimer

Plans shown are for marketing purposes only. All dimensions are approximate and not to scale. They are subject to errors and inaccuracies and no liability will be accepted. Interested parties should make their own enquiries. Inclusions and exclusions must be confirmed in the Residential Contract.

### APPROXIMATE DIMENSIONS

LIVING:	152.3m <sup>2</sup>
CARPORT:	33.6m <sup>2</sup>
PORCH/BALCONY:	11.5m <sup>2</sup>
DECK/VERANDAH:	15.4m <sup>2</sup>
TOTAL:	212.8m <sup>2</sup>