



82 Lakeside Drive ANDREWS FARM SA

4  2  1 

For an in-depth look at this home, please click on the 3D tour for a virtual walk-through or copy and paste this link into your browser

Virtual Tour Link:
<https://vtc.virtualltourscreator.com.au/share/3ecfd20f92f9c7cdc0c19c2e2f2a9395>

Price : \$ 400,000
Building Size : 112 sqm
Land Size : 348 sqm
View : <https://www.edgerealty.com.au/sale/sa/north-north-east-suburbs/andrews-farm/residential/house/7202320>

To submit an offer, please copy and paste this link into your browser:

<https://www.edgerealty.com.au/buying/make-an-offer/>

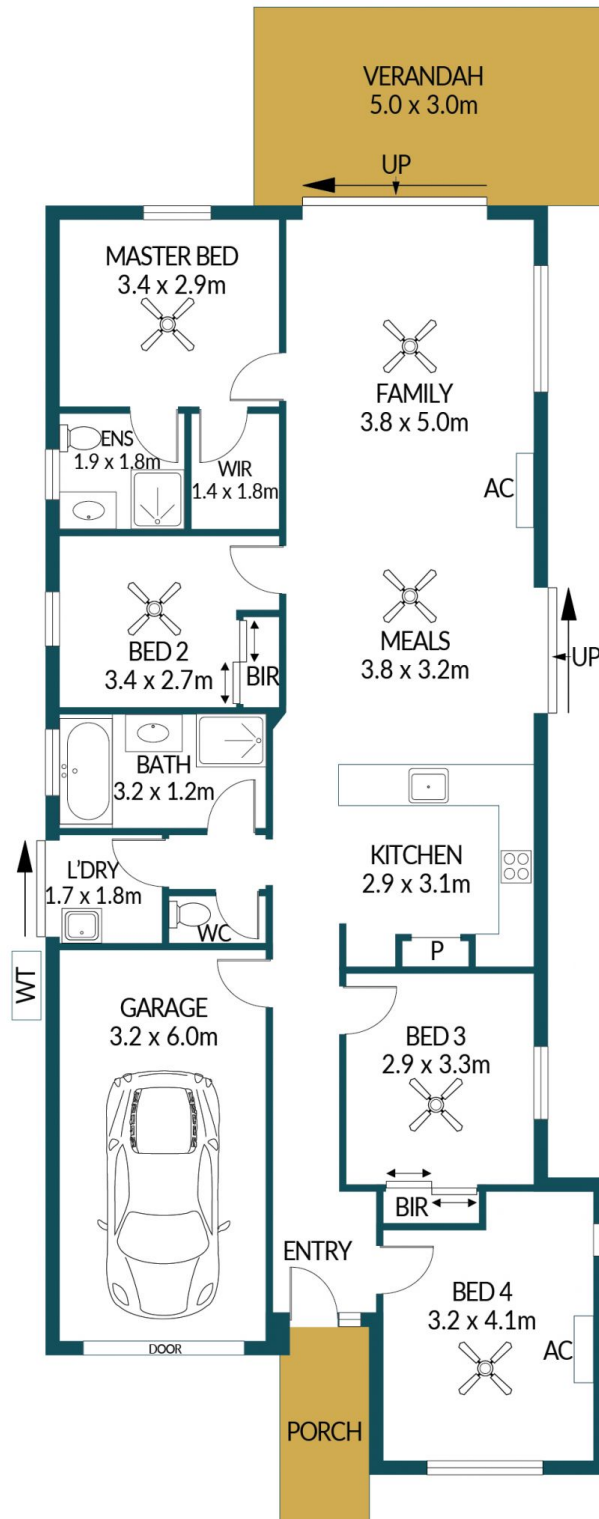
Mike Lao, Tyson Bennett and Edge Realty RLA256385 are proud to present to the market this bright and beautiful abode that any family will be proud to call their own. Enjoy all the space and privacy of a standalone property while relishing the benefits of easy-care living so you can do more of what you love in your downtime.



Mike Lao
0410390250



Tyson Bennett
0437161997



82 LAKESIDE DRIVE, ANDREWS FARM

Disclaimer

Plans shown are for marketing purposes only. All dimensions are approximate and not to scale. They are subject to errors and inaccuracies and no liability will be accepted. Interested parties should make their own enquiries. Inclusions and exclusions must be confirmed in the Residential Contract.

APPROXIMATE DIMENSIONS

LIVING:	112.3m ²
PORCH:	3.6m ²
VERANDAH:	15.0m ²
GARAGE:	19.2m ²
TOTAL:	150.1m ²