



9/557 Port Road WEST CROYDON SA

3  2  2 

For an in-depth look at this home, please click on the 3D tour for a virtual walk-through or copy and paste this link into your browser

Virtual Tour Link:
<https://my.matterport.com/show/?m=kPP5hYGTOLd>

To submit an offer, please copy and paste this link into your browser:
<https://www.edgerealty.com.au/buying/make-an-offer/>

Mike Lao, Brendon Ly and Edge Realty RLA256385 are proud to present to the market this easy-care, comfortable and well-maintained three-bedroom home, in the heart of West Croydon.

The tastefully designed layout is set across two spacious levels and features timber-look flooring in the living spaces,

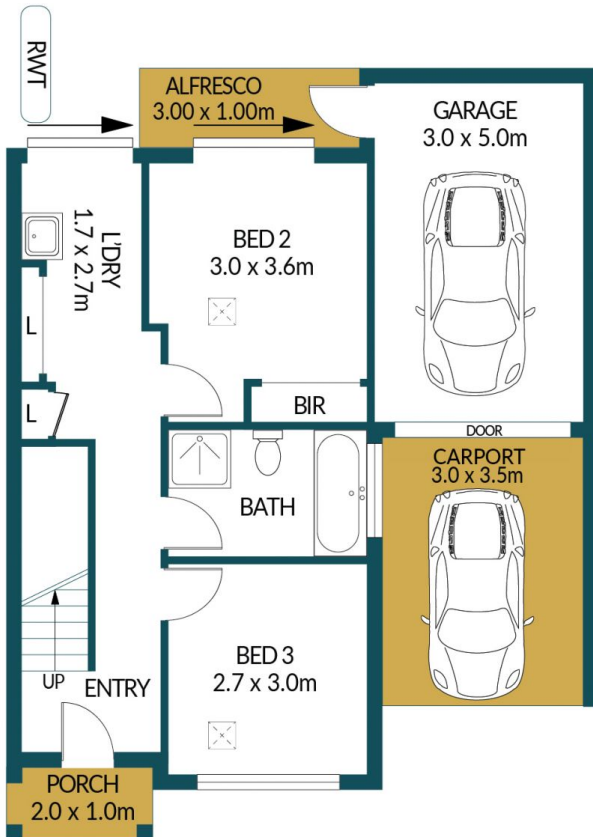
Price : \$ 500,000
Building Size : 106 sqm
Land Size : 112 sqm
View : <https://www.edgerealty.com.au/sale/sa/western-beachside-suburbs/west-croydon/residential/townhouse/7216521>



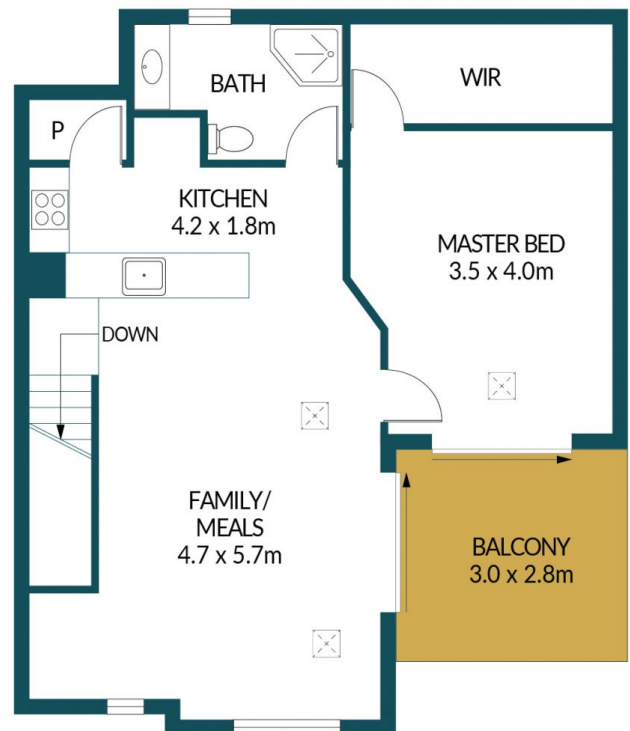
Mike Lao
 0410390250



Brendon Ly
 0447888444



GROUND FLOOR



FIRST FLOOR

9/557 PORT ROAD, WEST CROYDON

Disclaimer

Plans shown are for marketing purposes only. All dimensions are approximate and not to scale. They are subject to errors and inaccuracies and no liability will be accepted. Interested parties should make their own enquiries. Inclusions and exclusions must be confirmed in the Residential Contract.

APPROXIMATE DIMENSIONS

| | |
|-----------|---------------------|
| LIVING: | 106.6m ² |
| GARAGE: | 15.0m ² |
| CARPORT: | 10.5m ² |
| BALCONY: | 7.8m ² |
| PORCH | 2.0m ² |
| ALFRESCO: | 3.0m ² |
| TOTAL: | 144.9m ² |