



2 Walana Avenue SALISBURY NORTH SA

3 1 5

For an in-depth look at this home, please click on the 3D tour for a virtual walk-through or copy and paste this link into your browser

Virtual <https://my.matterport.com/show/?m=KNekoHSnCto> Tour Link:

To submit an offer, please copy and paste this link into your browser:
<https://www.edgerealty.com.au/buying/make-an-offer/>

Mike Lao, Tyson Bennett and Edge Realty RLA256385 are proud to present to the market 2 Walana Avenue, a charming 3-bedroom home that offers a fantastic 237.9 square metres of improved space on an approx 580 square metre corner block, neatly positioned at the end of a family-friendly cul-de-sac.

Price : \$ 465,000
Building Size : 129 sqm
Land Size : 580 sqm
View : <https://www.edgerealty.com.au/sale/sa/north-north-east-suburbs/salisbury-north/residential/house/7216815>



Mike Lao
0410390250

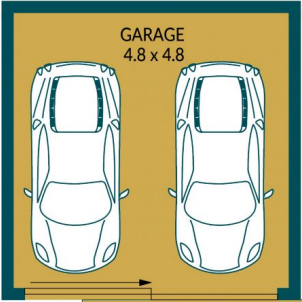


Tyson Bennett
0437161997

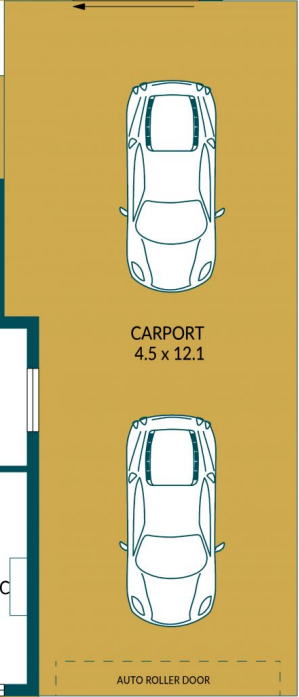
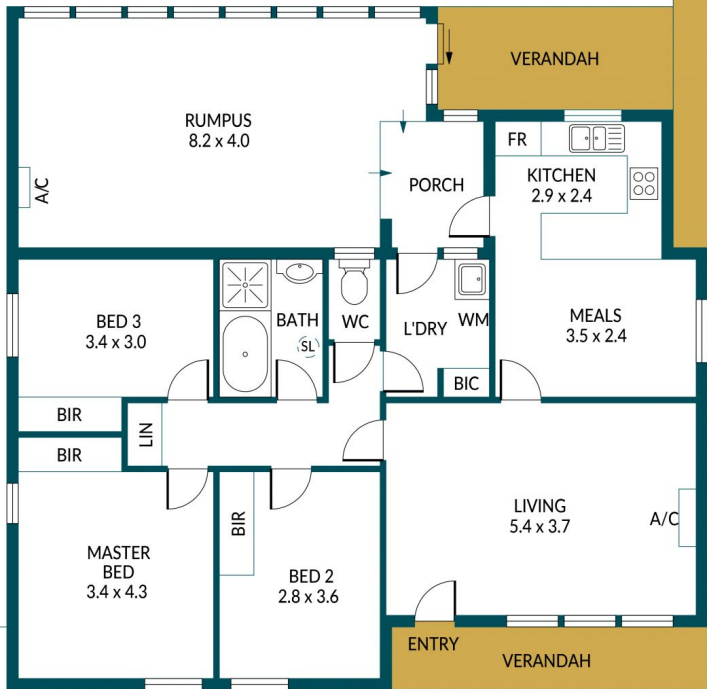
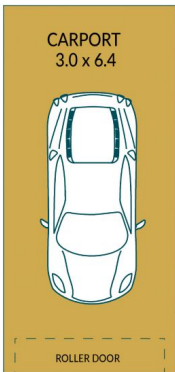


SHED
2.4 x 1.1

PIZZA
OVEN



RWT



2 WALANA AVENUE, SALISBURY NORTH

Disclaimer

Plans shown are for marketing purposes only. All dimensions are approximate and not to scale. They are subject to errors and inaccuracies and no liability will be accepted. Interested parties should make their own enquiries. Inclusions and exclusions must be confirmed in the Residential Contract.

APPROXIMATE DIMENSIONS

LIVING:	129.2 m ²
GARAGE:	23.0 m ²
CARPORTS:	77.0 m ²
VERANDAH:	6.1 m ²
SHED:	2.6 m ²
TOTAL:	237.9 m ²